



SILVER DAWN

Luxury travel is an art

 SILVERSEA®

SILVER DAWN
Luxury travel is an art

DISCOVER *SILVER DAWN*, WHERE LUXURY TRAVEL IS AN ART

A new era is approaching Silversea. The introduction of *Silver Dawn*, the 10th ship in our fleet, and third to join since the start of 2020, shows our strength and resilience in the global industry. With her arrival, we truly enter a new dawn of luxury cruising.

Silver Dawn is the evolution of her sisters, *Silver Muse* and *Silver Moon*. She is both classic yet modern, large enough to offer eight dining options – including the superb Sea and Land Taste (S.A.L.T.) programme – yet small enough for the famed Silversea onboard ambience.

Silver Dawn is also our chosen ship to debut the Otium programme. Otium is a highly curated, highly immersive wellness experience, inspired by the ancient Roman philosophy that living well and being well are not mutually exclusive. With experiences that take you from spa to sumptuous suite, we're sure you'll agree that Otium balances indulgence and enjoyment in equal measure and sets new standards of luxury cruising.

Set sail for a new dawn with Silversea.



A WORLD OF DINING OPTIONS

Silver Dawn's eight dining options offer something for even the most jaded gourmet. Enjoy everything from laid-back eating to elegant fine dining.

We pride ourselves on our gourmet offering, so guests aboard *Silver Dawn* can choose from elegant dining in Atlantide – our classic restaurant where you'll be able to enjoy delicacies such as lobster, caviar and filet mignon, to fine cuisine in La Dame, our French restaurant that is guaranteed to give your tastebuds a little ooh la la. Kaiseki is devoted to delicate Japanese dishes while La Terrazza is of course our signature Italian restaurant and a firm Venetian Society favourite. Silver Note is the choice for music lovers, where a live band plays while you dine on sophisticated tapas. Out on deck there's The Grill – a poolside rotisserie by day and romantic "hot rocks" restaurant by night. Last but not least is Spaccanapoli, a veritable Italian pizzeria at sea.

Silver Dawn is our second ship to feature the S.A.L.T. culinary concept, where guests are encouraged to understand their region through the flavours of the destination. S.A.L.T. is designed to immerse travellers in the places we visit, connecting them in a unique and holistic way.

Whatever you decide to choose, just pull up a chair and prepare to be amazed.



LA DAME

La Dame is the highest expression of excellence of French dining. The ambience is one of chic contemporary style, with crisp white table linens and the impeccable white gloved service associated with Silversea. Named after "La Dame de Paris" or the Eiffel Tower, La Dame echoes the traditions and cultures embedded in the French gastronomic past, while respecting its bright culinary future.





CONNOISSEUR'S CORNER

Discreet. Tasteful. Polished. If you appreciate the finer things in life, then the sophisticated touches of Connoisseur's Corner will not disappoint. Rich and luxurious, yet airy and spacious, this indoor/outdoor venue is where you sip the finest cognac or whisky from a prestigious range and revel in the tranquil murmur of after-dinner conversation. A premium choice of cigars is also available, making this a perfect evening haven of serenity.

DOLCE VITA

What could be a more fitting name for the very heart of *Silver Dawn*? Central to the soul and inspiration behind Silversea's Italian heritage, Dolce Vita is the gathering place for our savvy travellers of the world, a place where guests mingle and exchange stories and where new faces become lifelong friends. Let us spoil you with an incredible array of flawless cocktails, wines and spirits, as you relax, enjoy the evening sounds of a live pianist and enjoy "the sweet life".





ARTS CAFÉ

Nestled away on deck 8, the Arts Café is a cosy corner where the shelves are full of artistic reference books. The distinctive design of the venue is a relaxing getaway and offers daytime cuisine in the form of a café and deli-bar. But come early evening, the venue turns into a lively, evening

cocktail lounge meaning you can retreat to one of the comfortable chairs, grab a drink and relax as you absorb the incredible view and watch the world float by. Whether you prefer the gentle sea breeze of the terrace or the sophistication of the inside, a superlative experience is always assured.



KAISEKI

The fine art of Kaiseki lies in its meticulous preparation and beautiful presentation. Dishes reflect a passion for tradition and performance and our reinterpretation of these values is clear. Balanced menus have been inspired by the five elements of Japanese nutritional cuisine and respect the equilibrium of yin and yang. Daytime menus feature a varied and balanced menu of sushi, sashimi and other raw Asian-inspired dishes while teppanyaki is available exclusively for evening diners.



S.A.L.T. SEA AND LAND TASTE

Following the phenomenal success of S.A.L.T. aboard *Silver Muse*, we are thrilled to extend the concept to *Silver Dawn*. S.A.L.T. is a gastronomic concept that stretches your destination experience further than just your taste buds. Try the S.A.L.T. Kitchen, our dedicated dining venue and take your taste buds on a journey through the food heritage of the Mediterranean, the colourful Caribbean or the coasts of Northern Europe. Or visit the S.A.L.T. Bar, for regionally inspired cocktails made with locally produced quality spirits prepared by master mixologists.

The S.A.L.T. Lab is an interactive cooking laboratory that allows guests to get hands-on experience of local recipes in a professional kitchen. Small groups of guests are invited to take part in shared cooking sessions where they will not only learn how to cook the recipe, but will also understand the importance of each ingredient.

And yet still S.A.L.T. goes even further! Selected shore excursions on all *Silver Dawn* sailings benefit from a culinary focus. These in-depth and informative shore experiences are accompanied by regional food experts, adept at explaining the intricacies of foreign cuisine. You don't even need to be a foodie to enjoy S.A.L.T; simply bring a sense of curiosity and a desire to go further into food culture than ever before and we'll do the rest.



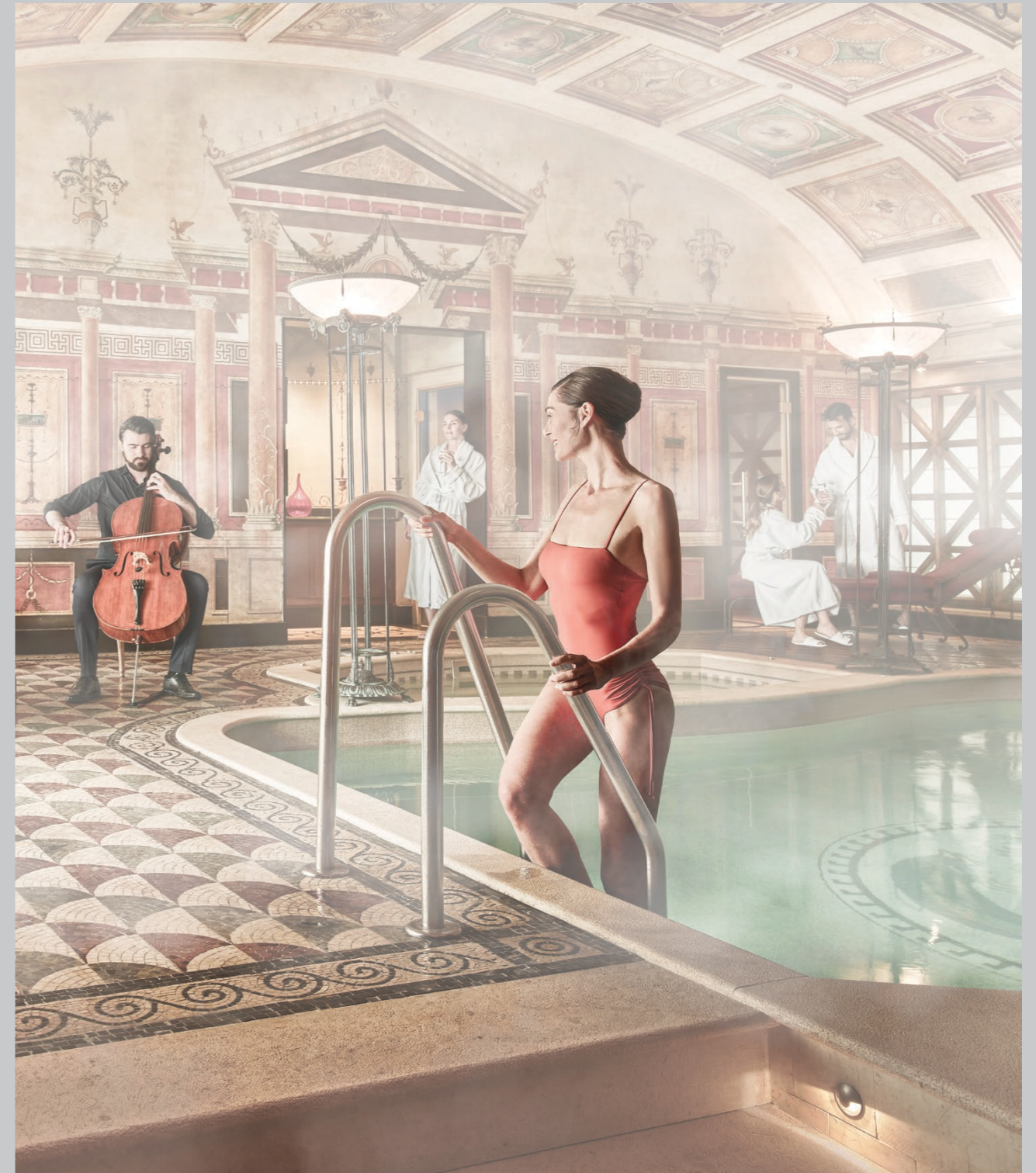
OTIVM

The quest for harmony between body and soul is the hallmark of humanity. From the extravagant pleasure of ancient Rome to modern-day wellness, the desire for combined leisure and pleasure is our ultimate aspiration.

And yet, all too often these concepts are seen as separate. At Silversea, we think the opposite. We believe that life is about enjoying unique moments in which living well and being well are not mutually exclusive. Our vision of wellbeing is not about sacrifice, but about enjoying the best life has to offer, every single day.

Inspired by the Mediterranean, this fusion of mind, body, soul, luxury and indulgence is what the Otium concept embodies. No other word summarises enjoyment and relaxation better. Otium is an ancient Roman concept that connects wellness to pleasure and stretches far beyond your average spa. Otium is a magical atmosphere that breathes 2,000 years of culture into traditional spas; it's where you can relax and unwind, but also where you can enjoy world-class treatments that make sure you look as good as you feel. From a wellness menu that even Venus herself would envy to in-suite experiences that take pampering to new depths, we promise Otium offers something for everyone.

We look forward to welcoming you.





OTIVM SPA EXPERIENCES

Welcome to the Otium spa, where we go above and beyond. Otium spa experiences offer the ultimate in hedonistic wellness. Combining the disciplines, ingredients and techniques of our Mediterranean ancestors, these treatments are state-of-the-art moments quite unlike anything you have experienced before.

Every treatment has been inspired by a holistic approach to wellness – natural ingredients fuse with the latest technology to offer guests a diverse range of treatments. Whether you chose to relax and revitalise with a spa session to pamper and pleasure, or enjoy a quiet moment of contemplation all for yourself, we promise to leave you not only feeling good, but looking great!

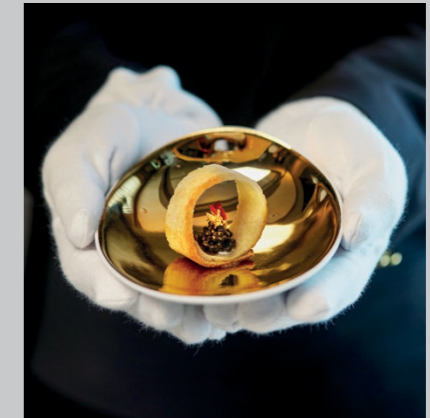




OTIVM IN-SUITE EXPERIENCES

Otium in-suite experiences go far beyond the spa – this is wellness that extends right into your suite. Signature moments are inspired and augmented by your spa journey: think a bath salt menu to personalise your tub-time, a cashmere blanket left on your balcony to warm you as you watch the waves go by or the promise of luxurious linens and pillows that are guaranteed to turn anyone into a sleeping beauty.

Of course, Otium enjoys culinary touches too... luxury snacks such as an indulgent lobster brioche to keep you going from lunch to dinner, or truffle popcorn for a sumptuous midnight feast make Otium's offerings a 360° wellness programme quite unlike anything you've ever experienced.





THE REAL DOOR-TO-DOOR ALL-INCLUSIVE JOURNEY

Now, your all-inclusive journey starts from home

WITH US, ALL-INCLUSIVE IS STANDARD

Our journeys feature the same renowned all-inclusive Silversea service enjoyed by our guests around the world. From international roundtrip flights to open-seated restaurants to butler service in every suite category, we've included it all for you. With Silversea you get utmost peace of mind so you can focus on what's important: exploring that magic of your destination to the fullest and enjoying all your time onboard and on-shore. All you have to do is show up, and we'll take care of the rest. Our journeys feature the same renowned all-inclusive Silversea service enjoyed by our guests around the world.

WHAT'S NEW

We've always been committed to making your voyage the most enjoyable and comfortable it can be, every time, as well as exceeding your expectations at every turn. And now we're even more all-inclusive than ever, with a brand new feature we know you'll love: full door-to-door service with private executive transfers. This means our five-star service accompanies you everywhere and your Silversea experience begins right at your front doorstep. We've made your journey entirely seamless so all you have to do is sit back, relax and delight in your travels.



PRE&POST CRUISE BENEFITS

- **NEW** Private executive transfers (between home and airport)¹
- International roundtrip flights (or air credit)²
- Business Class upgrades at reduced rates²
- Pre- and post-cruise hotel night/s, or day-use hotel depending on Silversea's air programme flight schedule
- Transfers between hotel, airport and ship
- Luggage handling



FINE DINING & BEVERAGES

- Multiple open-seated restaurants, serving diverse cuisine and an in-suite 24-hour dining service
- Sustainable caviar on demand 24 hours per day
- Beverages in-suite and throughout the ship, including champagne and selected wines, premium spirits, soft drinks, and more



PERSONALISED SERVICE AND AMENITIES

- Butler service in every suite category
- Industry leading crew-to-guest ratio
- Onboard gratuities
- Unlimited Wi-Fi



EXCURSIONS

- Shore excursions³
- Complimentary city centre shuttle when applicable

¹ - Private Executive Transfers between home/airport (or port) are included with all voyages, for up to 50 miles. Service is not available in all cities. Visit [Blacklane.com](https://www.blacklane.com) for more details.
² - Air is not available in all countries and to all destinations. Should you book your air independently or should the desired air not be available, a non-use credit will be offered, that you can apply as an extra saving to your cruise fare. Business Class upgrades are available in selected destinations. | ³ - One excursion per port, per day is included.

SILVER DAWN VOYAGES

Silver Dawn's maiden season will immerse her guests in some of the Mediterranean's most iconic destinations. Join us on a voyage of discovery that takes in the region's best-loved ports, as well as some of its lesser-known gems.



Venice, Italy

SILVER DAWN

596 GUESTS

DATE | | DAYS | PORTS



THE MEDITERRANEAN				2022
1 Apr		7	LISBON > Cádiz > Malaga > Cartagena > Valencia > Palma de Mallorca > BARCELONA	
8 Apr		10	BARCELONA > Porto Mahon > Palamos > Port Vendres > Marseille > Saint Tropez > Monte Carlo > Livorno > Portofino > ROME (CIVITAVECCHIA)	
18 Apr		9	ROME (CIVITAVECCHIA) > Sorrento > Siracusa > Day at sea > Bari > Kotor > Dubrovnik > Zadar > VENICE	
27 Apr		12	VENICE > Split > Hvar > Dubrovnik > Day at sea > Taormina (Giardini Naxos) > Palermo > Naples > Olbia > Ajaccio > Porto Santo Stefano > Livorno > ROME (CIVITAVECCHIA)	
16 May		9	BARCELONA > Valencia > Cartagena > Malaga > Cádiz > Tangier > Day at sea > Palma de Mallorca > BARCELONA	
25 May		9	BARCELONA > Palamos > Marseille > Monte Carlo (Grand Prix) > Livorno > Portofino > Olbia > ROME (CIVITAVECCHIA)	
10 Jun		10	VENICE > Trieste > Split > Hvar > Dubrovnik > Bari > Corfu > Taormina (Giardini Naxos) > Palermo > Naples > ROME (CIVITAVECCHIA)	
27 Jun		11	BARCELONA > Valencia > Cartagena > Malaga > Cádiz > Tangier > Gibraltar > Day at sea > Palma de Mallorca > Porto Mahon > BARCELONA	
21 Jul		14	VENICE > Hvar > Split > Dubrovnik > Kotor > Bari > Corfu > Day at Sea > Valletta > Taormina (Giardini Naxos) > Palermo > Naples > Sorrento > ROME (CIVITAVECCHIA)	
4 Aug		7	ROME (CIVITAVECCHIA) > Portofino > Livorno > Monte Carlo > Le Lavandou > Marseille > Palamos > BARCELONA	
11 Aug		9	BARCELONA > Palma de Mallorca > Palamos > Marseille > Saint Tropez > Menton > Livorno > Portofino > Olbia > ROME (CIVITAVECCHIA)	
20 Aug		9	ROME (CIVITAVECCHIA) > Sorrento > Catania > Valletta > Day at sea > Kotor > Dubrovnik > Split > VENICE	
29 Aug		9	VENICE > Zadar > Hvar > Dubrovnik > Bari > Corfu > Taormina (Giardini Naxos) > Palermo > Naples > ROME (CIVITAVECCHIA)	
14 Sep		10	BARCELONA > Valencia > Palma de Mallorca > Palamos > Marseille > Saint Tropez > Monte Carlo > Livorno > Portoferraio > Porto Santo Stefano > ROME (CIVITAVECCHIA)	
24 Sep		9	ROME (CIVITAVECCHIA) > Sorrento > Catania > Day at sea > Corfu > Kotor > Dubrovnik > Zadar > VENICE	
3 Oct		7	VENICE > Split > Kotor > Corfu > Dubrovnik > Zadar > Piran > VENICE	
10 Oct		9	VENICE > Split > Hvar > Dubrovnik > Bari > Corfu > Taormina (Giardini Naxos) > Palermo > Naples > ROME (CIVITAVECCHIA)	
19 Oct		7	ROME (CIVITAVECCHIA) > Livorno > Portofino > Monte Carlo > Toulon > Palma de Mallorca > Palamos > BARCELONA	
26 Oct		7	BARCELONA > Marseille > Monte Carlo > Rome (Civitavecchia) > Livorno > Toulon > Palma de Mallorca > BARCELONA	
2 Nov		7	BARCELONA > Palma de Mallorca > Valencia > Cartagena > Malaga > Cádiz > LISBON	
9 Nov		12	LISBON > Day at sea > Puerto del Rosario > Arrecife > 2 Days at sea > Mindelo > Porto Novo > Sal > Praia > Day at sea > Banjul > DAKAR	
21 Nov		12	DAKAR > Banjul > Day at sea > Praia > Sal > Mindelo > Porto Novo > 2 Days at sea > Puerto del Rosario > Arrecife > Day at sea > LISBON	
TRANSOCEANIC				2022
3 Dec		13	LISBON > Day at sea > Funchal > 7 Days at sea > San Juan > 2 Days at sea > FORT LAUDERDALE	
CARIBBEAN & CENTRAL AMERICA				2022
16 Dec		11	FORT LAUDERDALE > 2 Days at sea > San Juan > Gustavia > St Kitts > Roseau > St John's > St. Thomas > 2 Days at sea > FORT LAUDERDALE	
27 Dec		9	FORT LAUDERDALE > Day at sea > Cozumel Quintana Roo > Belize City > Roatan Island > Day at sea > George Town > Day at sea > Key West > FORT LAUDERDALE	
CARIBBEAN & CENTRAL AMERICA				2023
5 Jan		11	FORT LAUDERDALE > 2 Days at sea > San Juan > Gustavia > St Kitts > Roseau > St John's > St. Thomas > 2 Days at sea > FORT LAUDERDALE	
16 Jan		7	FORT LAUDERDALE > Day at sea > Grand Turk > Day at sea > St John's > St Kitts > Road Town > SAN JUAN	
23 Jan		7	SAN JUAN > Gustavia > St John's > Castries > Roseau > Little Bay > St Thomas > SAN JUAN	
30 Jan		9	SAN JUAN > St. Thomas > Gustavia > St Kitts > St John's > Fort-de-France > Castries > St George's > Bequia > BRIDGETOWN	
8 Feb		10	BRIDGETOWN > Castries > Day at sea > Kralendijk > Oranjestad > Willemstad > Day at sea > Scarborough > Bequia > St George's > BRIDGETOWN	
18 Feb		9	BRIDGETOWN > Bequia > St George's > Castries > Deshaies > St John's > Little Bay > Gustavia > Road Town > SAN JUAN	
27 Feb		7	SAN JUAN > St Kitts > St John's > Castries > Roseau > Gustavia > St Thomas > SAN JUAN	
6 Mar		7	SAN JUAN > St Thomas > Gustavia > St John's > Castries > St George's > Bequia > BRIDGETOWN	
13 Mar		10	BRIDGETOWN > Castries > Day at sea > Oranjestad > Kralendijk > Willemstad > Day at sea > Scarborough > Bequia > St George's > BRIDGETOWN	
TRANSOCEANIC				2023
23 Mar		12	BRIDGETOWN > 7 Days at sea > Santa Cruz de La Palma > Funchal > Day at sea > LISBON	

SILVER DAWN CONTINUED

DATE | | DAYS | PORTS

THE MEDITERRANEAN				2023
4 Apr		12	LISBON > Cádiz > Tangier > Malaga > Day at sea > Valencia > Palma de Mallorca > Barcelona > Marseille > Monte Carlo > Portofino > ROME (CIVITAVECCHIA)	
23 Apr		12	ROME (CIVITAVECCHIA) > Porto Santo Stefano > Menton > Toulon > Barcelona > Valencia > Palma de Mallorca > Day at sea > Malaga > Cádiz > LISBON	
NORTHERN EUROPE & BRITISH ISLES				2023
5 May		12	LISBON > Porto (Leixões) > Vigo > La Coruna > Bilbao > Bordeaux > Day at sea > Saint Malo > St Peter Port > Honfleur > SOUTHAMPTON	
17 May		14	SOUTHAMPTON > 2 Days at sea > Bergen > Geiranger > Hellesylt > Åndalsnes > Olden > Flåm > Eidfjord > Haugesund > Oslo > Gothenburg > Aarhus > COPENHAGEN	
31 May		7	COPENHAGEN > Day at sea > Helsinki > St Petersburg > Tallinn > STOCKHOLM	
7 Jun		7	STOCKHOLM > Helsinki > St Petersburg > Tallinn > Day at sea > COPENHAGEN	
14 Jun		14	COPENHAGEN > Gothenburg > 2 Days at sea > Bergen > Day at sea > Leknes > Day at sea > Honningsvag > Cruising Along North Cape > Tromsø > Day at sea > Ålesund > Olden > Flåm > Day at sea > COPENHAGEN	
28 Jun		7	COPENHAGEN > Day at sea > Tallinn > St Petersburg > Helsinki > STOCKHOLM	
5 Jul		7	STOCKHOLM > Helsinki > St Petersburg > Tallinn > Day at sea > COPENHAGEN	
12 Jul		10	COPENHAGEN > Day at sea > Bergen > Flåm > Olden > Geiranger > Hellesylt > Day at sea > Arendal > Oslo > COPENHAGEN	
22 Jul		7	COPENHAGEN > Day at sea > Helsinki > St Petersburg > Tallinn > STOCKHOLM	
29 Jul		7	STOCKHOLM > Helsinki > St Petersburg > Tallinn > Day at sea > COPENHAGEN	
5 Aug		10	COPENHAGEN > Day at sea > Bergen > Flåm > Olden > Geiranger > Hellesylt > Day at sea > Arendal > Oslo > COPENHAGEN	
15 Aug		7	COPENHAGEN > Day at sea > Helsinki > St Petersburg > Tallinn > STOCKHOLM	
22 Aug		7	STOCKHOLM > Helsinki > St Petersburg > Tallinn > Day at sea > COPENHAGEN	
29 Aug		10	COPENHAGEN > Oslo > Day at Sea > Flåm > Olden > Day at Sea > Geiranger > Hellesylt > Bergen > Haugesund > Day at Sea > COPENHAGEN	
8 Sep		14	COPENHAGEN > Karlskrona > Stockholm > Tallinn > St Petersburg > Helsinki > Riga > Klaipeda > Gdansk > Ronne > Rostock (Warnemunde) > Fredericia > COPENHAGEN	
22 Sep		14	COPENHAGEN > Day at sea > Ålesund > Day at Sea > Narvik > Leknes > Tromsø > Alta > Day at Sea > Sortland > Day at Sea > Flåm > Bergen > Day at Sea > COPENHAGEN	
6 Oct		14	COPENHAGEN > Day at sea > Ålesund > Day at Sea > Narvik > Leknes > Tromsø > Alta > Day at Sea > Sortland > Day at Sea > Flåm > Bergen > Day at Sea > COPENHAGEN	
20 Oct		15	COPENHAGEN > Day at sea > Hamburg > Amsterdam > Zeebrugge > Le Havre > Saint Malo > Day at sea > Bordeaux > Bilbao > Day at sea > LISBON	
THE MEDITERRANEAN				2023
4 Nov		10	LISBON > Day at sea > Casablanca > Tangier > Cádiz > Malaga > Cartagena > Valencia > Palma de Mallorca > BARCELONA	
14 Nov		11	BARCELONA > Palma de Mallorca > Valencia > Cartagena > Malaga > Gibraltar > Casablanca > Tangier > Cádiz > LISBON	
TRANSOCEANIC				2023
25 Nov		16	LISBON > Day at sea > Arrecife > Las Palmas > Santa Cruz de La Palma > 6 Days at sea > St John's > San Juan > 2 Days at sea > FORT LAUDERDALE	
CARIBBEAN & CENTRAL AMERICA				2023
11 Dec		10	FORT LAUDERDALE > 2 Days at sea > San Juan > Philipsburg > St John's > Roseau > Bequia > Fort-de-France > St George's > BRIDGETOWN	
21 Dec		15	BRIDGETOWN > Scarborough > Castries > Bequia > Day at sea > Willemstad > Oranjestad > Day at sea > Cartagena > Colon > Day at sea > Roatan Island > Cozumel Quintana Roo > Day at sea > FORT LAUDERDALE	
CARIBBEAN & CENTRAL AMERICA				2024
5 Jan		10	FORT LAUDERDALE > 2 Days at sea > San Juan > Gustavia > St John's > Roseau > Fort-de-France > St George's > Bequia > BRIDGETOWN	
15 Jan		11	BRIDGETOWN > Bequia > Day at sea > Oranjestad > Kralendijk > Willemstad > Day at sea > Scarborough > St George's > Fort-de-France > Castries > BRIDGETOWN	
26 Jan		10	BRIDGETOWN > Bequia > Castries > St John's > Gustavia > St. Kitts > St. Thomas > San Juan > 2 Days at Sea > FORT LAUDERDALE	
CARIBBEAN & CENTRAL AMERICA				2024
5 Feb		11	FORT LAUDERDALE > 2 Days at sea > San Juan > St Thomas > Gustavia > St John's > Philipsburg > Road Town > 2 Days at sea > FORT LAUDERDALE	
16 Feb		10	FORT LAUDERDALE > 2 Days at sea > San Juan > St Thomas > St John's > Gustavia > Road Town > 2 Days at sea > FORT LAUDERDALE	
26 Feb		11	FORT LAUDERDALE > 2 Days at sea > San Juan > Gustavia > Basseterre > St John's > Roseau > Castries > Bequia > St George's > BRIDGETOWN	
8 Mar		11	BRIDGETOWN > Fort-de-France > Day at sea > Kralendijk > Oranjestad > Willemstad > Day at sea > Port of Spain > St George's > Bequia > Castries > BRIDGETOWN	
TRANSOCEANIC				2024
19 Mar		14	BRIDGETOWN > 5 Days at sea > Mindelo > 2 Days at sea > Puerto del Rosario > Arrecife > Funchal > Day at sea > LISBON	

SUITES
AND
DECKPLANS





OWNER'S SUITE

There is nothing quite like the Owner's Suite on *Silver Dawn*. The vast living area is both spacious and welcoming, leading to an expansive private veranda with sweeping views. As you wander through the suite to the adjoining bedroom and en-suite bathroom, you're followed by the sun streaming in from the large windows throughout. The utmost in space, comfort and prestige.



GRAND SUITE

Our Grand Suite lives up to its name, with the largest veranda onboard that wraps around the edges of the ship to offer stunning views from all directions. Perfect for relaxing or entertaining, the open-concept suite features luxurious appointments and a sophisticated ambience.



ROYAL SUITE

Step into luxury, as you enter the Royal Suite, a majestic space featuring a large, pleasant living area spilling onto a comfortable private terrace. With floor-to-ceiling glass doors, the view inside is just as great as the view outside. Plush furnishings and spacious comfort all-around.





SILVER SUITE

Our Silver Suite is located in the upper deck and features the most amazing views of the surrounding seascape. From the vast living room to walk-in wardrobe, you'll have all the space you desire. In the evenings, try a sumptuous meal in the separate dining area or enjoy dinner out at the officer's table.



DELUXE VERANDA SUITE SUPERIOR VERANDA SUITE CLASSIC VERANDA SUITE

Your very own private veranda spills out onto sweeping views of the ocean. As you come back in through the floor-to-ceiling glass doors, you're welcomed by a refined atmosphere, ample living space and the finest of amenities. This is luxury that makes you feel right at home.

PANORAMA SUITE

With ample generous living space and a separate seating area next to large windows that flood the room with light, our Panorama Suite envelops you in luxury and comfort. The elegant décor and plush features all welcome you from the moment you step inside.



VISTA SUITE

Large full-view picture windows frame beautiful seascapes in our Vista Suite. Relax and enjoy yourself in the seating area or enjoy a lazy morning in your comfortable queen-size bed. From our generous pillow menu to the spacious marbled bathroom, we'll pamper you from the start.



SILVER DAWN – SUITE DIAGRAMS



OWNER'S SUITE

Available as a one-bedroom configuration or as a two-bedroom by adjoining with a Panorama suite (as illustrated)

ONE BEDROOM: 947-1055 SQ FT / 88-98 M²
INCLUDING VERANDA (129 SQ FT / 12 M²)
TWO BEDROOM: 1281-1389 SQ FT / 119-129 M²
INCLUDING VERANDA (129 SQ FT / 12 M²)

- Large veranda with patio furniture and floor-to-ceiling glass doors; bedroom two has an additional large picture window
- Living room with sitting area; bedroom two has an additional sitting area
- Separate dining area
- Twin beds or king-sized bed; bedroom two has an additional twin beds or queen-sized bed
- Marble bathroom with double vanity, separate shower and full-sized bath, plus a powder room; bedroom two has an additional marble bathroom with shower
- Custom-made luxury bed mattresses
- Walk-in wardrobe(s) with personal safe
- Vanity table(s)
- Writing desk(s)
- One 55" / 140 cm and one 40" / 102 cm flat-screen HD TVs in main suite, plus one 40" / 102 cm flat-screen HD TV in bedroom two
- Interactive Media Library
- Bose® Sound system with Bluetooth connectivity
- Illy® espresso machine
- Unlimited Premium Wifi

GRAND SUITE

Available as a one-bedroom configuration or as two bedrooms by adjoining with a Veranda Suite (as illustrated)

DECK 8:
ONE BEDROOM: 1572 SQ FT / 146 M²
INCLUDING VERANDA: (570 SQ FT / 53 M²)
TWO BEDROOM: 1970 SQ FT / 183 M²
INCLUDING VERANDA: (635 SQ FT / 59 M²)

- DECK 9:**
ONE BEDROOM: 1472 SQ FT / 137 M²
INCLUDING VERANDA: (474 SQ FT / 44 M²)
TWO BEDROOM: 1873 SQ FT / 174 M²
INCLUDING VERANDA: (538 SQ FT / 50 M²)
- Two verandas with patio furniture and floor-to-ceiling glass doors; bedroom two has an additional veranda
 - Living room with convertible sofa to accommodate an additional guest
 - Sitting area; bedroom two has an additional sitting area
 - Separate dining area
 - Twin beds or king-sized bed; bedroom two has an additional twin beds or queen-sized bed
 - Marble bathroom with double vanity, separate shower and full-sized bath, plus a powder room; bedroom two has an additional marble bathroom with full-sized bath
 - Custom-made luxury bed mattresses
 - Walk-in wardrobe(s) with personal safe
 - Vanity table(s)
 - Writing desk(s)
 - One 55" / 140 cm and one 40" / 102 cm flat-screen HD TVs in main suite, plus one 40" / 102 cm flat-screen HD TV in bedroom two
 - Interactive Media Library
 - Bose® Sound system with Bluetooth connectivity
 - Illy® espresso machine
 - Unlimited Premium Wifi

ROYAL SUITE

Available as a one-bedroom configuration or as a two-bedroom by adjoining with a Veranda suite (as illustrated)

ONE BEDROOM: 1130 SQ FT / 105 M²
INCLUDING VERANDA (129 SQ FT / 12 M²)
TWO BEDROOM: 1528 SQ FT / 142 M²
INCLUDING VERANDA (194 SQ FT / 18 M²)

- Large veranda with patio furniture and floor-to-ceiling glass doors; bedroom two has an additional veranda
- Living room with convertible sofa to accommodate an additional guest
- Sitting area; bedroom two has an additional sitting area
- Separate dining area
- Twin beds or king-sized bed; bedroom two has an additional twin beds or queen-sized bed
- Marble bathroom with double vanity, separate shower and full-sized bath, plus a powder room; bedroom two has an additional marble bathroom with full-sized bath
- Custom-made luxury bed mattresses
- Champagne on arrival
- Walk-in wardrobe(s) with personal safe
- Vanity table(s)
- Writing desk(s)
- One 55" / 140 cm and one 40" / 102 cm flat-screen HD TVs in main suite, plus one 40" / 102 cm flat-screen HD TV in bedroom two
- Interactive Media Library
- Bose® Sound system with Bluetooth connectivity
- Illy® espresso machine
- Unlimited Premium Wifi

SILVER SUITE

Available as a one-bedroom configuration or as a two-bedroom by adjoining with a Panorama suite (as illustrated). One suite available as a wheelchair accessible suite.

ONE BEDROOM: 786 SQ FT / 73 M²
INCLUDING VERANDA (129 SQ FT / 12 M²)
TWO BEDROOM: 1119 SQ FT / 104 M²
INCLUDING VERANDA (129 SQ FT / 12 M²)

- Veranda with patio furniture and floor-to-ceiling glass doors
- Living room with convertible sofa to accommodate an additional guest
- Sitting area
- Separate dining area
- Twin beds or king-sized bed
- Marble bathroom with double vanity, full-sized bath, separate shower; bedroom two has an additional marble bathroom with a full-sized bath
- Wheelchair accessible suite has a marble bathroom with vanity and separate shower (no full-sized bath as illustrated)
- Walk-in wardrobe with personal safe
- Vanity table
- Writing desk
- One 55" / 140 cm and one 40" / 102 cm flat-screen HD TVs in main suite; plus one 40" / 102 cm cm flat-screen HD TV in bedroom two
- Interactive Media Library
- Unlimited Premium Wifi
- Bose® Sound system with Bluetooth connectivity
- Illy® espresso machine

DELUXE VERANDA SUITE SUPERIOR VERANDA SUITE CLASSIC VERANDA SUITE

Some Veranda Suites accommodate three guests. Deluxe Verandas offer preferred central location with identical accommodations to Classic and Superior Verandas.

387 SQ FT / 36 M²
INCLUDING VERANDA (64 SQ FT / 6 M²)

- Veranda with patio furniture and floor-to-ceiling glass doors
- Sitting area
- Twin beds or queen-sized bed
- Marble bathroom with vanity, full-sized bath, separate shower
- Walk-in wardrobe with personal safe
- Writing desk
- 40" / 102 cm flat-screen HD TV
- Interactive Media Library
- Unlimited Standard Wifi

PANORAMA SUITE

Available as a one bedroom configuration.

334 SQ FT / 31 M² – DECK 9

- Sitting area
- Twin beds or queen-sized bed
- Marble bathroom with vanity, full-sized bath, separate shower
- Walk-in wardrobe with personal safe
- Writing desk
- One 40" / 102 cm flat-screen HD TV
- Interactive Media Library
- Unlimited Standard Wifi

VISTA SUITE

Some Vista Suites are available as a wheelchair accessible suite.*

334 SQ FT / 31 M² – DECK 4
WHEELCHAIR ACCESSIBLE SUITE: 440-646 SQ FT / 41-60 M²

- Sitting area
- Twin beds or queen-sized bed
- Marble bathroom with vanity, full-sized bath, separate shower
- Wheelchair accessible suite has a marble bathroom with vanity and separate shower (no full-sized bath)
- Walk-in wardrobe with personal safe
- Writing desk
- 40" / 102 cm flat-screen HD TV
- Interactive Media Library
- Unlimited Standard Wifi

All suites feature:

- Butler service
- Refrigerator and bar setup stocked with your preferences
- Plush bathrobes
- Pillow menu
- Luxury bath amenities
- Complimentary Wifi for all suites
- Personalised stationery
- Umbrella
- Hair dryer
- Wall mounted USB-C mobile device chargers
- Direct-dial telephone(s)
- Champagne on arrival

* Wheelchair accessible suite does not include full-sized bath

SILVER DAWN – DECK PLANS



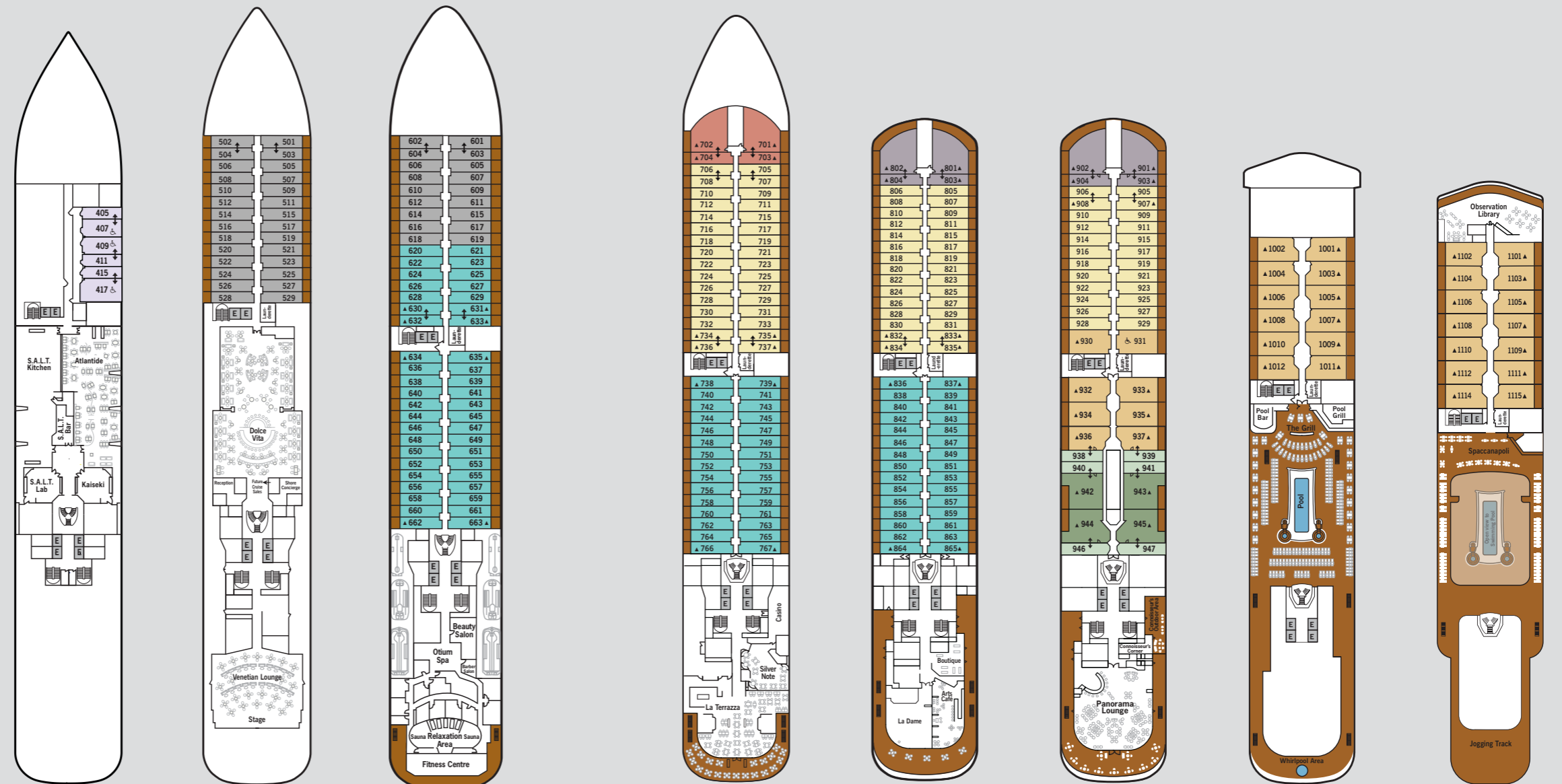
SUITE CATEGORIES

- Owner's Suite
- Grand Suite
- Royal Suite
- Silver Suite
- Deluxe Veranda Suite
- Superior Veranda Suite
- Classic Veranda Suite
- Panorama Suite
- Vista Suite



SPECIFICATIONS

Crew	411
Officers	International
Guests	596
Tonnage	40,700
Length	698 Feet / 212.8 Metres
Width	86 Feet / 27 Metres
Speed	19.8 Knots
Passenger Decks	8
3rd Guest Capacity	▲
Connecting Suites	↕
Wheelchair Accessible Suites	♿
407, 409, 417, 931	
Built	2021
Registry	Bahamas



DECK 4	DECK 5	DECK 6	DECK 7	DECK 8	DECK 9	DECK 10	DECK 11
Atlantide Kaiseki S.A.L.T. Kitchen S.A.L.T. Bar S.A.L.T. Lab	Reception/Guest Relations Shore Concierge Dolce Vita Venetian Lounge Future Cruise Sales	Otium Spa Fitness Centre Beauty Salon Sauna Relaxation Area	La Terrazza Silver Note Casino	Arts Café Boutique La Dame	Panorama Lounge Connoisseur's Corner Whirlpool Area	Pool Deck Pool Bar The Grill Whirlpool Area	Observation Library Spaccanapoli Jogging Track

Deck plans are for illustration purposes only and may be subject to change.
Suite diagrams shown are for illustration purposes only and may vary from actual square footage. Please refer to suite specifications for square footage.

Along with exclusive experiences across all seven continents, we also offer exclusive, value-enhancing programs. All programs are capacity controlled and subject to availability.

Door-to-Door All-Inclusive Fare

From international flights and all airport/hotel/ship transfers, including new private executive transfers from home, to pre- and post-cruise hotel nights, shore excursions and more, this truly "door to door" option ensures seamless travels and complete peace of mind knowing that you are in Silversea's care every moment of your journey.

Port-to-Port All-Inclusive Fare

The Port-to-Port fare option is appealing to those who prefer to make their pre- and post-cruise travel arrangements independently. Featured on selected voyages only, these fares offer flexibility without sacrificing luxury, as you'll enjoy all of Silversea's inclusive amenities and services once onboard. Save up to 35% when compared to our Door-to-Door fares, without air. Port-to-Port All-Inclusive fares are now available on selected itineraries with a non-refundable 15% deposit.

Fare Guarantee Policy

Our Fare Guarantee Policy provides you with the peace of mind in knowing that when you plan ahead and book early our Door-to-Door All-Inclusive Fares, not only will you be able to reserve your desired suite, but you can also benefit from any future fare reduction for your voyage, upon request.

Onboard Savings

Book your next voyage while you are sailing and save an extra 5% on selected Door-to-Door All-Inclusive fares or 2.5% on our Port-to-Port All-Inclusive fares. Offer available on selected voyages.

Extend Your Voyage Savings

Combine two or more consecutive voyages and enjoy up to 5% additional savings. Our combination voyages already include the 5% additional savings.

Solo Travellers

Special single fares are available on selected voyages at only 25% above the double occupancy fare, on lower suite categories.



VENETIAN SOCIETY PROGRAMME

MEMBERSHIP PRIVILEGES

- Onboard recognition and invitations to private events
- An additional 5% off on selected sailings
- Ship visitation privileges

MILESTONE REWARDS

- 100 DAYS: 5% savings on future sailings
- 250 DAYS: 10% savings on future sailings
- 350 DAYS: complimentary 7-day voyage
- 500 DAYS: complimentary 14-day voyage
- 500-day milestone, complimentary 7-day voyage for every 150 days sailed

All of the above milestones include complimentary laundry service (excludes dry cleaning and "press only"). "Venetian Sailings" 5% and milestones 5% and 10% reward combinable only with "Door-to-Door All-Inclusive fares".

 SILVERSEA®

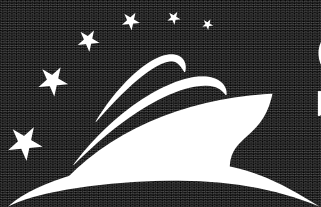
MAS INFORMACIÓN: 91 542 76 63 Ó 93 412 51 37

O VISITE: WWW.CRUCEROSTARCLASS.COM

RESERVAS EN AGENCIAS DE VIAJE

UN MUNDO DE CRUCEROS / STARCLASS

Agente de Ventas en España de Silversea Cruises



STARCLASS
CRUCEROS