



THE RITZ-CARLTON
YACHT COLLECTION

EXPLORE THE WONDERS OF ASIA

ABOARD OUR
NEWEST SUPERYACHT
LUMINARA

THE PHILIPPINES, JAPAN, THAILAND,
VIETNAM AND BEYOND





EXPLORE MYSTICAL EASTERN SHORES

ABOARD NEW SUPERYACHT LUMINARA

The winter of 2025 through the spring of 2026 will offer an opportunity to explore the wonders of Asia with The Ritz-Carlton Yacht Collection. Our inaugural Asian itineraries transport you to faraway lands while enjoying the all-inclusive comforts aboard our newest superyacht, *Luminara*, featuring just 226 spacious suites. Every detail has been considered and every amenity included, from 24-hour in-suite dining to onboard gratuities to premium wines and spirits, creating a sense of freedom and ease that defines the yachting lifestyle. Simply take in the seaside panoramas from the private terrace of your suite and enjoy the relaxed elegance and genuinely caring service on board. Then head ashore to immerse yourself in cosmopolitan capitals and unexpected island hideaways from Bangkok to Borneo and beyond. We can even arrange for airfare and hotel reservations prior to and after your sailing to ensure a seamless, carefree journey from beginning to end.

COLORFUL COASTS OF ASIA

PALAWAN,
PHILIPPINES
CRYSTAL CLEAR WATER
OF ENTALULA ISLAND

A GRAND CONTINENT ON AN INTIMATE SCALE
The vibrant cities and scenic archipelagos of Asia tell many tales — in the whispers of underwater ecosystems in the Philippines, the bold flavor of street food in Ho Chi Minh City, the fortitude of a castle that has stood for centuries in the heart of modern Osaka. On a journey aboard the intimate superyacht *Luminara*, explore the intricate details that create the mosaic of Asia's storied lands, weaving together serene epiphanies and exhilarating revelations into a voyage of discovery.



THE FREEDOM TO EXPLORE

INSPIRED ITINERARIES

Crafted to reveal the diverse wonders of Asia's far-reaching shores, our itineraries capture the striking beauty of the continent's celebrated yachting destinations. Bespoke experiences ashore connect you to local communities who share authentic insights and fresh perspectives on the historic and natural phenomena you discover.

The relaxed pace of each journey features frequent late-evening departures and overnight stays, allowing time to immerse yourself in each destination exactly as you wish — from shopping local markets in Bangkok to relaxing on blissful beaches of the Philippines to hiking to the UNESCO-listed castles and shrines of Japan.

When *Luminara* sails into the heart of legendary cities and drops anchor off yachting harbors, an exquisite panorama appears before you as you relax on your private terrace or in the breezy, open-air spaces on deck. Take in views of soaring Shanghai Tower, the dramatic limestone karsts of Hạ Long Bay, and swaying palms lining the powdery beaches of Ko Samui. Then head ashore to experience these intriguing destinations up close and in depth.

2025 / 2026



SINGAPORE TO HONG KONG

ABOARD LUMINARA

Toast the New Year with a celebration aboard *Luminara* and then relax into 2026 on the renowned beaches of Koh Samui before sailing for the vibrant Thai capital of Bangkok. Vietnam tells fascinating tales of history in the subterranean Cu Chi Tunnels outside Ho Chi Minh City and in the capital of Hanoi, which you might explore during your stay in scenic Hả Long Bay.

NIGHTS: 14
DEPARTS: TUESDAY, DECEMBER 30, 2025
VOYAGE: 13251230

DATE	DESTINATION	ARRIVE	DEPART
30	Board / Singapore, Singapore		5:00 PM
31	Sailing the South China Sea		
THURSDAY, JANUARY 1, 2026			
1	Koh Samui, Thailand (⚓)	12:00 PM	7:00 PM
2	Bangkok (Laem Chabang), Thailand	12:00 PM	☾
3	Bangkok (Laem Chabang), Thailand		7:00 PM
4	Koh Kood, Thailand (⚓)	9:00 AM	6:00 PM
5	Sailing the Gulf of Thailand		
6	Ho Chi Minh City, Vietnam	8:00 AM	☾
7	Ho Chi Minh City, Vietnam		2:00 PM
8	Sailing the South China Sea		
9	Da Nang, Vietnam	10:00 AM	10:00 PM
10	Sailing the South China Sea		
11	Hả Long Bay, Vietnam	9:00 AM	8:00 PM
12	Sailing the South China Sea		
13	Hong Kong, China / Disembark	6:00 AM	

[REQUEST PRICING](#)



HONG KONG TO SINGAPORE

ABOARD LUMINARA

The heart of this journey explores the islands of the Philippines, including the forested mountains and white sand beaches of Busuanga, El Nido and Puerto Princesa. Equally spectacular is the island of Borneo, where gentle waves lap at the beaches and proboscis monkeys inhabit the treetops of Bako National Park near Kuching.

NIGHTS: 12
DEPARTS: TUESDAY, JANUARY 13, 2026
VOYAGE: 13260113

DATE	DESTINATION	ARRIVE	DEPART
13	Board / Hong Kong, China		5:00 PM
14	Sailing the South China Sea		
15	Salomague, Philippines	8:00 AM	8:00 PM
16	Sailing the South China Sea		
17	Busuanga, Philippines	8:00 AM	7:00 PM
18	El Nido, Palawan, Philippines (⚓)	8:00 AM	5:00 PM
19	Puerto Princesa, Palawan, Philippines	8:00 AM	9:00 PM
20	Sailing the Sulu and South China Seas		
21	Bandar Ser Begawan, Brunei	8:00 AM	7:00 PM
22	Sailing the South China Sea		
23	Kuching, Borneo, Malaysia	7:00 AM	7:00 PM
24	Sailing the South China Sea		
25	Singapore, Singapore / Disembark	6:00 AM	

[REQUEST PRICING](#)

BORNEO, MALAYSIA



PALAWAN, PHILIPPINES



PHILIPPINE PARADISE. JUST OFFSHORE FROM EL NIDO ON THE PHILIPPINE ISLAND OF PALAWAN, DROP ANCHOR AMIDST THE SPECTACULAR BACUIT ARCHIPELAGO, A SEASCAPE OF RUGGED LIMESTONE ISLETS RISING FROM TURQUOISE WATERS. WHITE SAND BEACHES, LAGOONS AND HIDDEN COVES AWAIT ASHORE, AND UNDERWATER YOU'LL DISCOVER A WONDERLAND OF VIBRANT TROPICAL FISH AND CORAL.

(⚓) Yacht anchored in destination.

(☾) Overnight in port.



HO CHI MINH CITY, VIETNAM



THE HEART OF VIETNAMESE CULTURE. AN ICON OF HO CHI MINH CITY FOR MORE THAN 100 YEARS, BEN THANH MARKET IS A MAZE OF BUSTLING ALLEYWAYS WHERE LOCAL VENDORS OFFER EVERYTHING FROM SILK SCARVES TO AROMATIC SPICES AND STREET FOOD SUCH AS SEAFOOD ROLLS AND NOODLE SOUP.



SINGAPORE TO HONG KONG

ABOARD LUMINARA

From fried rice and pad Thai in Bangkok to banh mi and spring rolls in Ho Chi Minh City, cuisine will undoubtedly be a highlight of this journey. Complementing your culinary exploration are countless temples, palaces and museums, as well as the remarkable beauty of Hanoi, a UNESCO World Heritage site where thousands of limestone islets adorn the seascape.

NIGHTS: 14

DEPARTS: SUNDAY, JANUARY 25, 2026

VOYAGE: 13260125

DATE	DESTINATION	ARRIVE	DEPART
25	Board / Singapore, Singapore		6:00 PM
26	Sailing the South China Sea		
27	Koh Samui, Thailand	12:00 PM	7:00 PM
28	Bangkok (Laem Chabang), Thailand	12:00 PM	
29	Bangkok (Laem Chabang), Thailand		7:00 PM
30	Koh Kood, Thailand	9:00 AM	6:00 PM
31	Sailing the South China Sea		
SUNDAY, FEBRUARY 1, 2026			
1	Ho Chi Minh City, Vietnam	8:00 AM	
2	Ho Chi Minh City, Vietnam		2:00 PM
3	Sailing the South China Sea		
4	Da Nang, Vietnam	10:00 AM	10:00 PM
5	Sailing the South China Sea		
6	Hà Long Bay, Vietnam	9:00 AM	8:00 PM
7	Sailing the South China Sea		
8	Hong Kong, China / Disembark	6:00 AM	

[REQUEST PRICING](#)



HONG KONG TO SINGAPORE

ABOARD LUMINARA

Inland from beautiful Hanoi awaits the diverse architectural landscape of the Vietnamese capital of Hanoi, from the ancient Temple of Literature to the imposing mausoleum of Ho Chi Minh. Then sail for the city that bears the leader's name and on to the temples and palaces of Thailand's capital, stopping along the way at the pristine island paradise of Koh Kood.

NIGHTS: 14

DEPARTS: SUNDAY, FEBRUARY 8, 2026

VOYAGE: 13260208

DATE	DESTINATION	ARRIVE	DEPART
8	Board / Hong Kong, China		6:00 PM
9	Sailing the South China Sea		
10	Hà Long Bay, Vietnam	8:00 AM	10:00 PM
11	Sailing the South China Sea		
12	Da Nang, Vietnam	7:00 AM	7:00 PM
13	Sailing the South China Sea		
14	Ho Chi Minh City, Vietnam	9:00 AM	
15	Ho Chi Minh City, Vietnam		2:00 PM
16	Sailing the South China Sea		
17	Koh Kood, Thailand	8:00 AM	5:00 PM
18	Bangkok (Laem Chabang), Thailand	7:00 AM	
19	Bangkok (Laem Chabang), Thailand		7:00 PM
20	Sailing the South China Sea		
21	Sailing the South China Sea		
22	Singapore, Singapore / Disembark	7:00 AM	

[REQUEST PRICING](#)

TEMPLE OF THE EMERALD BUDDHA. OVERLOOKING THE NETWORK OF RIVERS THAT LEAD TO BANGKOK'S FAMOUS FLOATING MARKETS, THE GOLDEN TOWERS OF THE GRAND PALACE HOLD PRICELESS TREASURES, INCLUDING A REVERED 15TH-CENTURY BUDDHA CARVED FROM PRECIOUS JASPER.



BANGKOK, THAILAND



Yacht anchored in destination.

Overnight in port.



KOH SAMUI, THAILAND



A SERENE ISLAND ESCAPE. AN ENORMOUS GOLDEN BUDDHA OVERLOOKS THE ISLAND OF KOH SAMUI, WHERE POWDERY SANDS INVITE RELAXATION SHORESIDE. INLAND HIKES LEAD TO NA MUANG WATERFALLS CASCADING THROUGH THE FORESTS, AND A 4X4 ADVENTURE INTO THE MOUNTAINS REVEALS A SECRET GARDEN WITH A REVERED COLLECTION OF BUDDHAS.



SINGAPORE TO HONG KONG

ABOARD LUMINARA

This journey pairs the serene islands of Koh Samui and Koh Kood with Thailand's bustling capital of Bangkok, where the gilded Grand Palace and the soaring tower of Wat Arun vie for your attention. Ho Chi Minh City provides its own contrasts with Saigon Notre Dame Cathedral and the Jade Emperor Pagoda, while Hạ Long Bay reveals a landscape of dramatic islets during a cruise on a traditional sailing ship.

NIGHTS: 14

DEPARTS: SUNDAY, FEBRUARY 22, 2026

VOYAGE: 13260222

DATE	DESTINATION	ARRIVE	DEPART
22	Board / Singapore, Singapore		5:00 PM
23	Sailing the South China Sea		
24	Koh Samui, Thailand	12:00 PM	7:00 PM
25	Bangkok (Laem Chabang), Thailand	12:00 PM	
26	Bangkok (Laem Chabang), Thailand		7:00 PM
27	Koh Kood, Thailand	9:00 AM	6:00 PM
28	Sailing the South China Sea		
SUNDAY, MARCH 1, 2026			
1	Ho Chi Minh City, Vietnam	8:00 AM	
2	Ho Chi Minh City, Vietnam		2:00 PM
3	Sailing the South China Sea		
4	Da Nang, Vietnam	10:00 AM	10:00 PM
5	Sailing the South China Sea		
6	Hạ Long Bay, Vietnam	9:00 AM	8:00 PM
7	Sailing the South China Sea		
8	Hong Kong, China / Disembark	6:00 AM	

REQUEST PRICING



HONG KONG TO TOKYO

ABOARD LUMINARA

The beautifully manicured acreage of 16th-century Yu Garden offers a moment of quietude amidst the feverish energy of Shanghai, where soaring skyscrapers like Oriental Pearl Tower provide a perspective from above the city. Then explore the capitals of South Korea and Japan, arriving in Tokyo just in time for cherry blossom season.

NIGHTS: 12

DEPARTS: SUNDAY, MARCH 8, 2026

VOYAGE: 13260308

DATE	DESTINATION	ARRIVE	DEPART
8	Board / Hong Kong, China		5:00 PM
9	Sailing the East China Sea		
10	Sailing the East China Sea		
11	Shanghai, China	4:00 PM	
12	Shanghai, China		9:00 PM
13	Sailing the Yellow Sea		
14	Seoul (Incheon), South Korea	7:00 AM	9:00 PM
15	Sailing the East China Sea		
16	Nagasaki, Japan	8:00 AM	7:00 PM
17	Sailing the East China Sea		
18	Osaka (Kobe), Japan	7:00 AM	12:00 AM
19	Sailing the East China Sea		
20	Tokyo, Japan / Disembark	7:00 AM	

REQUEST PRICING

SHANGHAI, CHINA



SEOUL, SOUTH KOREA



Yacht anchored in destination.

Overnight in port.

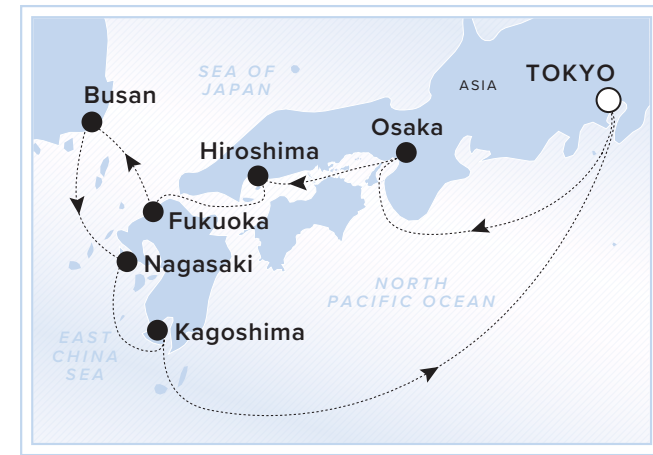


OSAKA, JAPAN



KAGOSHIMA, JAPAN

AN ANCIENT CRATER. STUNNING FROM ANY VANTAGE POINT, MOUNT SAKURAJIMA RISES FROM THE BAY ACROSS FROM KAGOSHIMA. TAKE IN THE VIEW FROM SHIROYAMA PARK AND OBSERVATORY HIGH ABOVE THE CITY, OR HOP A FERRY TO SAKURA ISLAND FOR A CLOSER VIEW OF THE ACTIVE VOLCANO.



TOKYO ROUNDTRIP

ABOARD LUMINARA

The cultural treasures of Japan are even more impressive during cherry blossom season, when the blooms blanket the grounds of Osaka Castle and accent the views of Mount Sakurajima from Kagoshima. This voyage also calls on UNESCO World Heritage sites ranging from the floating shrine and peace memorial of Hiroshima to the remains of Christian castles and cathedrals in the Nagasaki region.

NIGHTS: 10
DEPARTS: FRIDAY, MARCH 20, 2026
VOYAGE: 13260320

DATE	DESTINATION	ARRIVE	DEPART
20	Board / Tokyo, Japan		7:00 PM
21	Sailing the East China Sea		
22	Osaka (Kobe), Japan	8:00 AM	12:00 AM
23	Sailing the East China Sea		
24	Hiroshima, Japan	8:00 AM	6:00 PM
25	Fukuoka, Japan	9:00 AM	9:00 PM
26	Busan, South Korea	8:00 AM	5:00 PM
27	Nagasaki, Japan	8:00 AM	7:00 PM
28	Kagoshima, Japan	8:00 AM	2:00 PM
29	Sailing the East China Sea		
30	Tokyo, Japan / Disembark	8:00 AM	

REQUEST PRICING

- Yacht anchored in destination.
- Overnight in port.



TOKYO TO HONG KONG

ABOARD LUMINARA

Considered a food capital of the world, Osaka merits in-depth exploration, while Japan's UNESCO-listed castles of Himeji, Nara and Kyoto are also nearby. South Korea's dynamic capital of Seoul boasts its own UNESCO palaces along with traditional villages offering authentic cuisine and crafts. During an overnight in Shanghai, experience a performance of the ancient art of acrobatics before sailing for Hong Kong.

NIGHTS: 12
DEPARTS: MONDAY, MARCH 30, 2026
VOYAGE: 13260330

DATE	DESTINATION	ARRIVE	DEPART
30	Board / Tokyo, Japan		6:00 PM
31	Sailing the East China Sea		
WEDNESDAY, APRIL 1, 2026			
1	Osaka (Kobe), Japan	8:00 AM	12:00 AM
2	Sailing the East China Sea		
3	Nagasaki, Japan	8:00 AM	7:00 PM
4	Sailing the East China Sea		
5	Seoul (Incheon), South Korea	8:00 AM	10:00 PM
6	Sailing the Yellow Sea		
7	Shanghai, China	8:00 AM	
8	Shanghai, China		2:00 PM
9	Sailing the East China Sea		
10	Sailing the East China Sea		
11	Hong Kong, China / Disembark	6:00 AM	

REQUEST PRICING

BUSAN, SOUTH KOREA

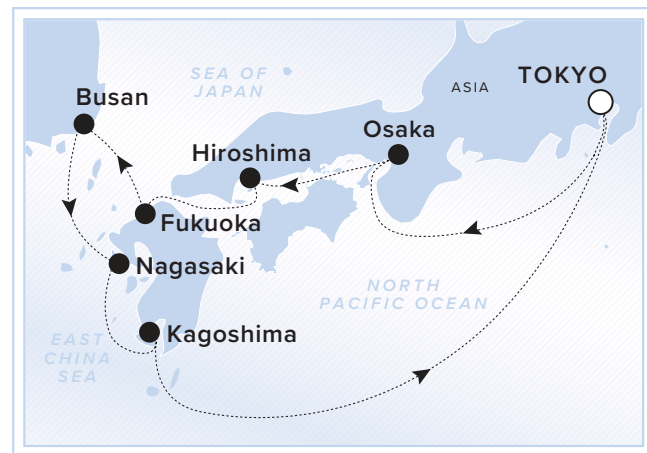




FUKUOKA, JAPAN



KING OF RAMEN. WHILE THE KAWACHI WISTERIA GARDEN IN FUKUOKA FEATURES SOME OF JAPAN'S MOST BEAUTIFUL BLOOMS, THE REGION MAY BE MOST FAMOUS FOR THE TONKOTSU RAMEN THAT ORIGINATED HERE. THE RICH, SAVORY NOODLE SOUP IS MADE WITH BRAISED PORK IN A SLOW-SIMMERED BROTH.



TOKYO ROUNDTRIP

ABOARD LUMINARA

A quick bullet train from Osaka takes you to the ancient capital of Kyoto, where the gleaming Golden Pavilion is just one of 17 monuments recognized by UNESCO. Modern history tells poignant tales at the peace memorials of Hiroshima and Nagasaki, while the hot springs of Fukuoka and geothermal sand baths of Kagoshima offer the chance to relax and reflect on your discoveries.

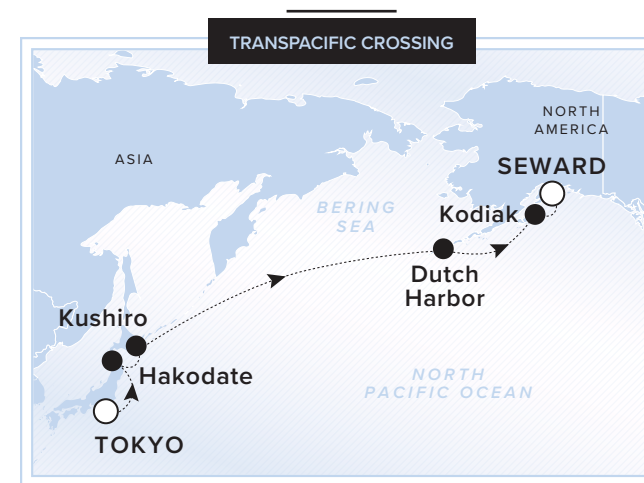
NIGHTS: 10

DEPARTS: SUNDAY, MAY 3, 2026

VOYAGE: 13260503

DATE	DESTINATION	ARRIVE	DEPART
3	Board / Tokyo, Japan		6:00 PM
4	Sailing the East China Sea		
5	Osaka (Kobe), Japan	8:00 AM	12:00 AM
6	Sailing the Yellow Sea		
7	Hiroshima, Japan	8:00 AM	6:00 PM
8	Fukuoka, Japan	9:00 AM	9:00 PM
9	Busan, South Korea	8:00 AM	5:00 PM
10	Nagasaki, Japan	8:00 AM	7:00 PM
11	Kagoshima, Japan	8:00 AM	2:00 PM
12	Sailing the East China Sea		
13	Tokyo, Japan / Disembark	8:00 AM	

REQUEST PRICING



TOKYO TO SEWARD

ABOARD LUMINARA

Cherry trees flank Hakodate's massive star-shaped fortress of Goryokaku, now a serene public park, while a different but equally enchanting scene awaits on a stroll through the diverse ecosystems of Kushiro Shitsugen National Park, home to rare bird species. Then relax by the infinity pool, in the spa or on your private terrace aboard *Luminara* as you sail for the Alaskan wilderness, including the wildlife refuge on Kodiak Island.

NIGHTS: 15

DEPARTS: WEDNESDAY, MAY 13, 2026

VOYAGE: 13260513

DATE	DESTINATION	ARRIVE	DEPART
17	Board / Tokyo, Japan		6:00 PM
18	Sailing the North Pacific Ocean		
19	Hakodate, Japan	11:00 AM	7:00 PM
20	Kushiro, Japan	12:00 PM	10:00 PM
21	Sailing the North Pacific Ocean		
22	Sailing the North Pacific Ocean		
23	Sailing the North Pacific Ocean		
24	Sailing the North Pacific Ocean		
25	Sailing the North Pacific Ocean		
26	Sailing the North Pacific Ocean		
27	Dutch Harbour, Alaska, USA	8:00 AM	6:00 PM
28	Sailing the Bering Sea		
29	Sailing the Bering Sea		
30	Kodiak, Alaska, USA	8:00 AM	11:00 PM
31	Sailing the North Pacific Ocean		
MONDAY, JUNE 1, 2026			
1	Seward, Alaska, USA / Disembark	7:00 AM	

REQUEST PRICING

THE WILD WEST. A FLIGHTSEEING EXCURSION IS THE BEST WAY TO CATCH A GLIMPSE OF KODIAK BEARS, ARGUABLY THE WORLD'S LARGEST BEAR AT OVER 10 FEET TALL AND UP TO 900 POUNDS. CHARTER A BOAT TO WATCH FOR WHALES, THE WORLD'S LARGEST MAMMALS, MIGRATING THROUGH THE WATERS OFF OF KODIAK ISLAND.



KODIAK, ALASKA



⚓ Yacht anchored in destination.

🌙 Overnight in port.

IMMERSIVE EXPERIENCES ASHORE

Thoughtfully curated with a sense of purpose, our shore excursions offer authentic and memorable experiences that reveal the true essence of each destination. Whether you join a cadre of fellow travelers or select a private excursion with personal companions, exploration in small groups allows for a measure of intimacy, enhancing the valuable insights and fresh perspectives gained when immersing yourself in local culture or discovering a vista of untamed natural beauty.

SELECT GROUP EXCURSIONS

Guided by a local expert, explore a destination with a small group of fellow travelers from your yacht. Our Select Group Excursions focus on iconic landmarks and bucket-list sights while also revealing some hidden gems that make each locale unique.

PRE-DESIGNED PRIVATE EXCURSIONS

Guests traveling together can select from our Pre-Designed Private Excursions that cater to an array of interests. With a dedicated guide, explore at your own pace and enjoy an unforgettable excursion in the company of those closest to you.

CUSTOM PRIVATE EXCURSIONS

If you have a unique vision and would like a more personalized shoreside exploration, then let us craft a Custom Private Excursion just for you. Our destination specialists can create an itinerary tailored exactly to your preferences.





THE ESSENCE OF LUMINARA

AN EASY, RELAXED ELEGANCE

Of all the remarkable destinations you'll visit, the yacht itself may easily become your favorite. Indeed, from the moment you step aboard *Luminara*, you feel as if you're on your own private yacht. An open and airy design creates a seamless connection with the surrounding panoramas, ensuring your every moment on board is always tethered to the serenity of the shore, and attended by the signature hospitality unique to The Ritz-Carlton.

CAPACITY: 452 GUESTS

TONNAGE: 46,750

YEAR BUILT: 2025

[CLICK HERE FOR LUMINARA'S DECKPLANS](#)



THE YACHTING LIFESTYLE

EVERY DETAIL CONSIDERED

Fusing casual elegance with innovative design, the yacht's spacious, light-filled interiors and open-air decks offer inviting spaces for celebrations with friends and secluded alcoves for quiet reflection. With nearly one crew member for every guest, your every need is met with genuine care, all while traveling in the comfort of an intimate setting with an elevated level of thoughtfulness and attention.

FEEL INSPIRED

A seaside harbor comes into view from the private terrace of your suite, and the warm sun on your skin awakens your spirit of adventure. When the anchor drops, head aft to The Marina at the water's edge to explore scenic coastlines by kayak or paddleboard. Then venture ashore to discover renowned icons and hidden treasures, engage with the locals and immerse yourself in the culture, creating meaningful connections through a shared experience of the wonderment of new worlds.



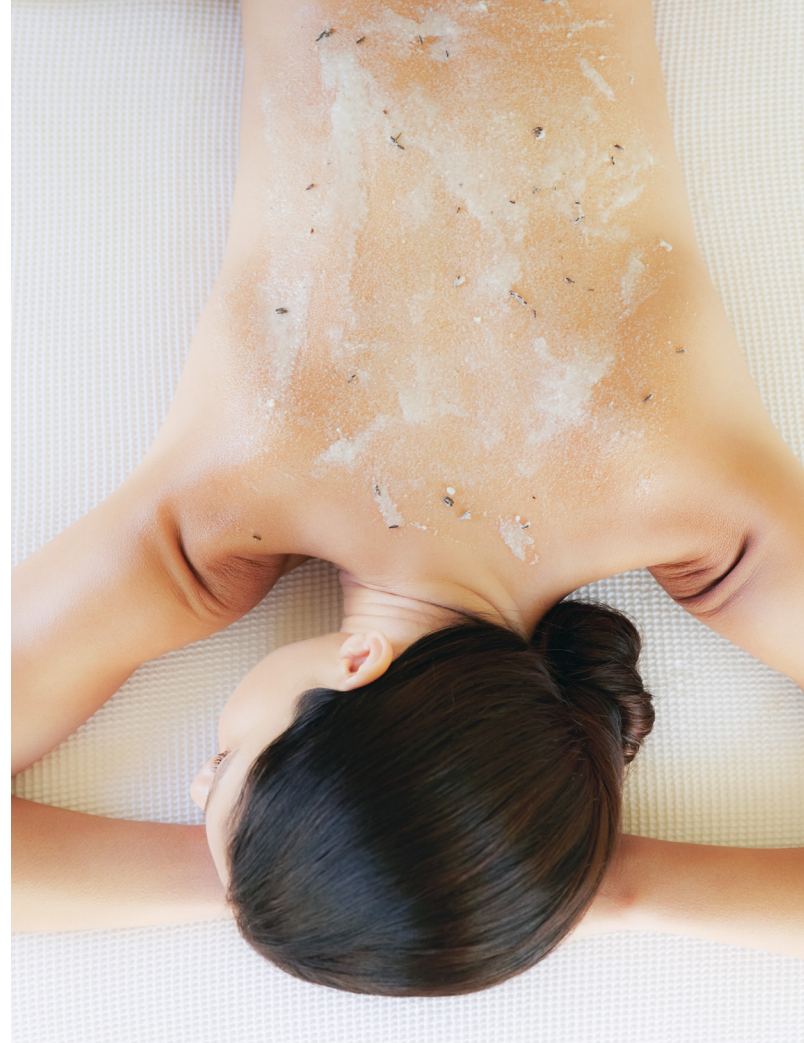


AN ALL-INCLUSIVE EXPERIENCE

The joys of yachting are all the more carefree when the day-to-day details of your travels are already attended to. The all-inclusive experience aboard *Luminara* invites you to relax in your private oasis at sea with included amenities and services that set the standard for luxury travel. On every voyage, you'll find peace of mind knowing that the details of your surroundings have been thoughtfully considered. From in-suite espresso machines and premium beverages to small bites all hours of the day, higher-tier mini-luxuries are yours to enjoy with our compliments.

ALL-INCLUSIVE FEATURES

- All-suite ocean-view accommodations, each with private terrace
- Access to a Suite Ambassador in all suite categories
- Onboard gratuities
- Multiple dining venues
- 24-hour in-suite dining
- Beverages in-suite and throughout the yacht
- Onboard entertainment and enrichment
- Marina-style platform with access to watersports in select ports
- Complimentary access to Starlink premium Wi-Fi services



CHERISH THE DAY

ENRICHING AND PAMPERED PURSUITS

Beyond the discovery ashore, your time on board is open to do as you wish. You might choose to greet the day with a sunrise stretch on deck or get your cardio going at the Fitness Studio. Perhaps it's relaxing by the infinity pool, taking in the endless views of sea, sun and sky, or savoring a decadent afternoon tea. Active or leisurely, it's all up to you.

ACTIVITIES MAY INCLUDE:

- Watersports activities
- Infinity pool with live entertainment
- The Ritz-Carlton Spa
- Culinary experiences
- Wine tastings and mixology classes
- Sushi-making classes
- Floral design and art workshops
- Afternoon tea with live entertainment
- Personal training
- Fitness, yoga and mat Pilates classes
- Sunset stretch on deck
- Library with popular titles
- Trivia games



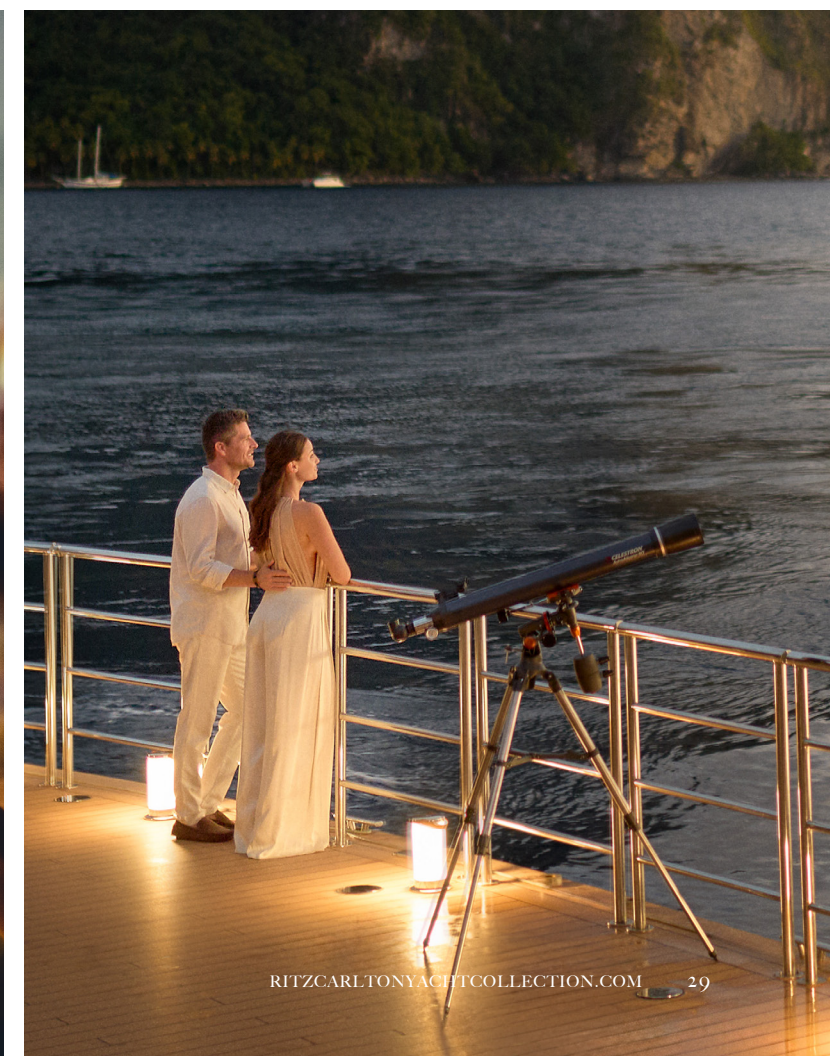
CELEBRATE THE NIGHT

THE CAREFREE BLISS OF YACHTING

As the sun sets on the coasts of the Asian continent and the night sky alights in a blanket of stars, an energized air of excitement envelops *Luminara*. As you relive the adventures of the day, evenings are an invitation to gather with new friends to dance, laugh, share stories and toast discoveries, with special themed nights adding a dash of bespoke festivity.

ACTIVITIES MAY INCLUDE:

- Special celebratory events such as En Blanc and Disco nights
- Live music in The Observation Lounge
- Live music in The Living Room
- Camaraderie and craft cocktails at The Bar
- Champagne and caviar pairings
- Cognacs and cigars at The Humidor
- Host a private dinner with newfound friends in the privacy of your suite





A CULINARY JOURNEY

SAVORY AND SUBLIME

From Mediterranean cuisine to Latin-inspired dishes to handmade dim sum and sushi, the culinary offerings aboard *Luminara* showcase a diverse array of global flavors. Specialty restaurants include a decadent tasting menu created in collaboration with a Michelin-starred chef, and in-suite dining is always available should you wish to simply relax in the comfort of your suite. Whichever dining experience you choose, our master chefs skillfully prepare each dish with only the freshest ingredients, ensuring your every craving is fulfilled.

-
- Five unique dining venues; à la carte to al fresco
 - 24-hour in-suite dining
 - Michelin-inspired restaurant
 - Mediterranean and Asian specialty venues
 - Regional influences, reflecting local cuisines
 - Locally sourced; fresh and creative
 - Poolside dining
 - Coffees, espresso bar, pastries and all-day treats
 - Cocktail lounge serving lunch, dinner and late-night nibbles
 - Curated, private culinary experiences

SPACE TO CONNECT

INSPIRED BY THE SEA AND SHORE

Designed with meticulous craftsmanship and timeless elegance, each space on board seamlessly blends casual luxury with comfortable, inviting surroundings. Expansive windows, spacious open-air decks and a palette of earth and sea tones connect you with the waters that *Luminara* sails and the scenic harbors that welcome you ashore.

Whether you retreat to a private alcove in The Living Room with a good book or join friends at The Marina Terrace for cocktails at the water's edge, every space imbues the sense of freedom and ease that is the essence of the yachting lifestyle.

LUMINARA
THE
BEACH
HOUSE



LUMINARA
THE
POOL DECK



LUMINARA
FITNESS
CENTER

LUMINARA
THE MARINA
TERRACE



LUMINARA
THE LIVING
ROOM

FEEL AT HOME

YOUR WELL-APPOINTED, PRIVATELY TERRACED SUITE

Experience the comforts of home in a spacious ocean-view suite, where you greet each day from your private terrace and where each morning's view is more stunning than the last. Expertly appointed with luxurious amenities, your suite can transition effortlessly from private retreat to a haven for entertaining.

SUITE AMENITIES AND FEATURES

- Access to a Suite Ambassador in all suite categories
- Private oceanview terrace
- Luxury custom king bed sleep system
- Custom luxury bed and bath linens
- Double vanity bathrooms
- Luxury bath amenities
- 24-hour in-suite dining
- Espresso machine with complimentary coffee and teas
- Mini-bar provisioned to your preferences
- Complimentary chilled bottle of champagne upon arrival
- Complimentary Wi-Fi

[CLICK HERE TO VIEW DECK PLANS AND SUITE CATEGORIES](#) 



LUMINARA
THE
VIEW
SUITE

SUITE:
517 – 689 SQ FT / 48 – 64 SQ M
TERRACE:
108 – 205 SQ FT / 10 – 19 SQ M

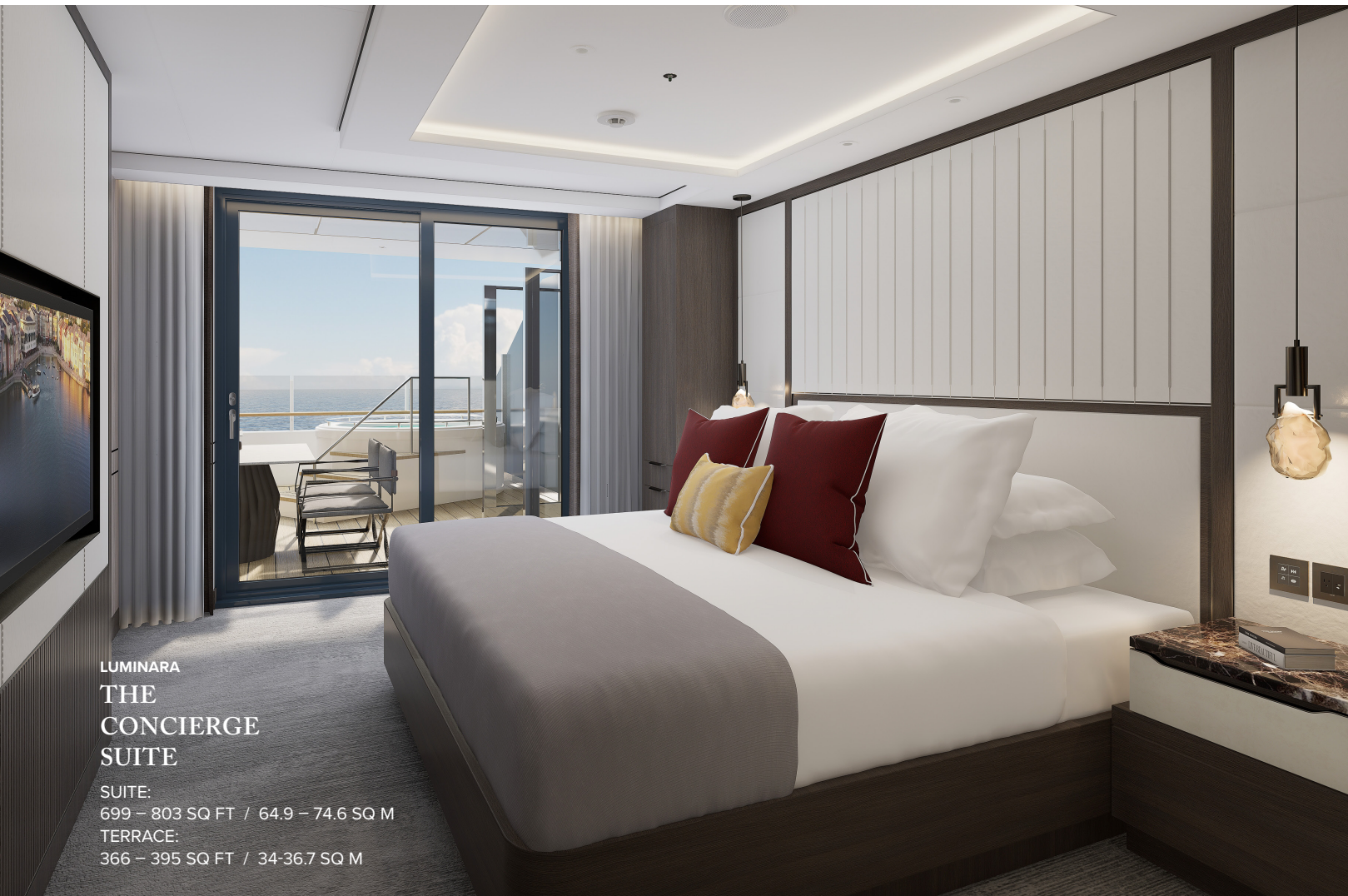


LUMINARA
THE
OWNER'S
SUITE

SUITE:
732 - 1033 SQ FT / 68 - 96 SQ M
TERRACE:
581 - 700 SQ FT / 54 - 65 SQ M

LUMINARA
THE
TERRACE
SUITE

SUITE:
294 SQ FT / 27.3 SQ M
TERRACE:
52 – 108 SQ FT / 4.8 – 10 SQ M



LUMINARA
THE
CONCIERGE
SUITE

SUITE:
699 – 803 SQ FT / 64.9 – 74.6 SQ M
TERRACE:
366 – 395 SQ FT / 34-36.7 SQ M



LUMINARA
THE
LUMINARA
SUITE

SUITE:
506 – 657 SQ FT / 47 – 61 SQ M
TERRACE:
291 – 301 SQ FT / 27 – 28 SQ M

TRAVEL SEAMLESSLY

Allow our Air and Hotel Concierge to design a seamless travel experience from before your journey begins to after your voyage has come to an end. Find peace of mind with our customized reservation arrangements, where every logistical detail of your vacation experience has been considered. Our Air and Hotel Concierge is available to arrange air travel, hotel stays and transfers to and from the yacht for a memorable and unencumbered travel experience.



AIR

Our Air and Hotel Concierge can arrange your air travel, customized and coordinated to the yacht's schedule with our fully flexible air program. Select your preferred airline and class of service or allow us to facilitate private air arrangements.

HOTEL

Extend the luxury of your yacht experience with thoughtfully orchestrated hotel arrangements, with access to Ritz-Carlton Hotels, Marriott luxury properties and other internationally celebrated hotels. Daily breakfast, portage and a group transfer between the hotel and yacht are among the included amenities.

TRANSFERS

For a further stress-free experience, group and private transfers can be arranged between the airport and the pier or between the pier and the hotel on embarkation and disembarkation days.

LUGGAGE

Our luggage valet program provides guests with the option to have all luggage shipped directly from their home to the yacht. If you wish to take advantage of this service, please advise your Personal Travel Professional or Travel Agent in advance.




TO MOVE, TO BREATHE, TO FLY, TO FLOAT,
TO GAIN ALL WHILE YOU GIVE,
TO ROAM THE ROADS OF LANDS REMOTE,
TO TRAVEL IS TO LIVE.

HANS CHRISTIAN ANDERSEN
DANISH AUTHOR



**THE RITZ - CARLTON
YACHT COLLECTION**

For more information visit
RITZCARLTONYACHTCOLLECTION.COM
or contact your travel professional.

CLICK HERE TO CONTACT US 

Americas & Australia
833-999-7292 U.S. & Canada
+1 305-907-7099 Outside the U.S. & Canada

Europe, Asia, the Middle East & Africa
+356 2778 0076