



RIVERSIDE
MOZART

The first part of the document discusses the importance of maintaining accurate records of all transactions. It emphasizes that every entry, no matter how small, should be recorded to ensure the integrity of the financial data. This includes not only sales and purchases but also expenses, income, and any other financial activities that occur within the reporting period.

Next, the document outlines the various methods used to collect and analyze financial data. It describes how data is gathered from different sources, such as sales receipts, invoices, and bank statements, and how this information is then processed and analyzed to identify trends and patterns. The importance of using reliable and consistent data collection methods is highlighted to ensure the accuracy of the results.

The document also addresses the challenges associated with financial data analysis, such as incomplete or inconsistent data, and provides strategies to overcome these challenges. It suggests ways to improve data collection processes and to verify the accuracy of the data before analysis.

Finally, the document discusses the implications of the financial data analysis. It explains how the results can be used to make informed decisions about business operations, such as identifying areas for cost reduction, improving sales strategies, and managing cash flow. The document concludes by emphasizing the value of financial data analysis in providing a clear and comprehensive view of the organization's financial health.

DEAR READERS AND FRIENDS OF THE SEASIDE & RIVERSIDE COLLECTION,

as Hanseatics we have always had a great affinity for boats and ships in our family. For some years now, we have been considering entering the river cruise market. Our goal was not to take over just any ship, but one that fits the philosophy of the Seaside Collection in every aspect. One that sets new standards in the river cruise ship market and that, like our hotels, guarantees guests unforgettable moments. The Riverside Mozart is such a ship. On the Riverside Mozart you have endless space, you have a personal butler and depending on your mood, you choose our special excursions. Being on board the Riverside Mozart means: relaxing to the maximum, lounging in style and enjoying yourself in every way. Our chef and his team will spoil you with their culinary creations. It is quite possible that you will already realize while reading the following pages: Life is too short to miss a trip on this wonderful ship through the cultural landscape of the Danube. Or to say it like Oscar Wilde:

“TEMPTATIONS SHOULD BE YIELDED TO. WHO KNOWS, WHETHER THEY WILL COME AGAIN.”

We trust you will enjoy reading this publication and look forward to welcoming and pampering you on board.

Sincere regards,



Anouchka Gerlach



Gregor Gerlach



LET YOUR SENSES SAIL



River cruising is a treat for the senses, allowing you to see, touch, feel and experience the world as never before.



Sit on the spacious, open-air upper deck as you

BREATHE IN THE LOVELY LANDSCAPES AND LIVELY LOCALES

these are moments you'll never forget.

Enjoy an Earl Grey at teatime or perhaps a Taittinger rose' sundowner as you marvel at the engineering feat of the locks. On land, immerse yourself in the cultures of Europe's most beautiful cities. Back on board, enjoy the culinary specialties of the regions you just explored. Unpack once and delight in a million memories. A river cruise on the Riverside Mozart means getting lost in the world and finding yourself. Sailing with fewer fellow guests on board, yet experiencing more.

AS THE SCENERY CHANGES,
SO WILL YOU. WITH EXPLORATION
COMES INTROSPECTION AND
LIFE COMES INTO VIEW.







Check in.

SAIL ON THE BEST

Mozart was a master of music. The Riverside Mozart is a masterpiece on the river. It's not for nothing that this ship bears his name. An exceptional phenomenon like the musician, this ship is versatile and knows how to captivate her audience. The renowned business magazine Forbes describes this ship as:

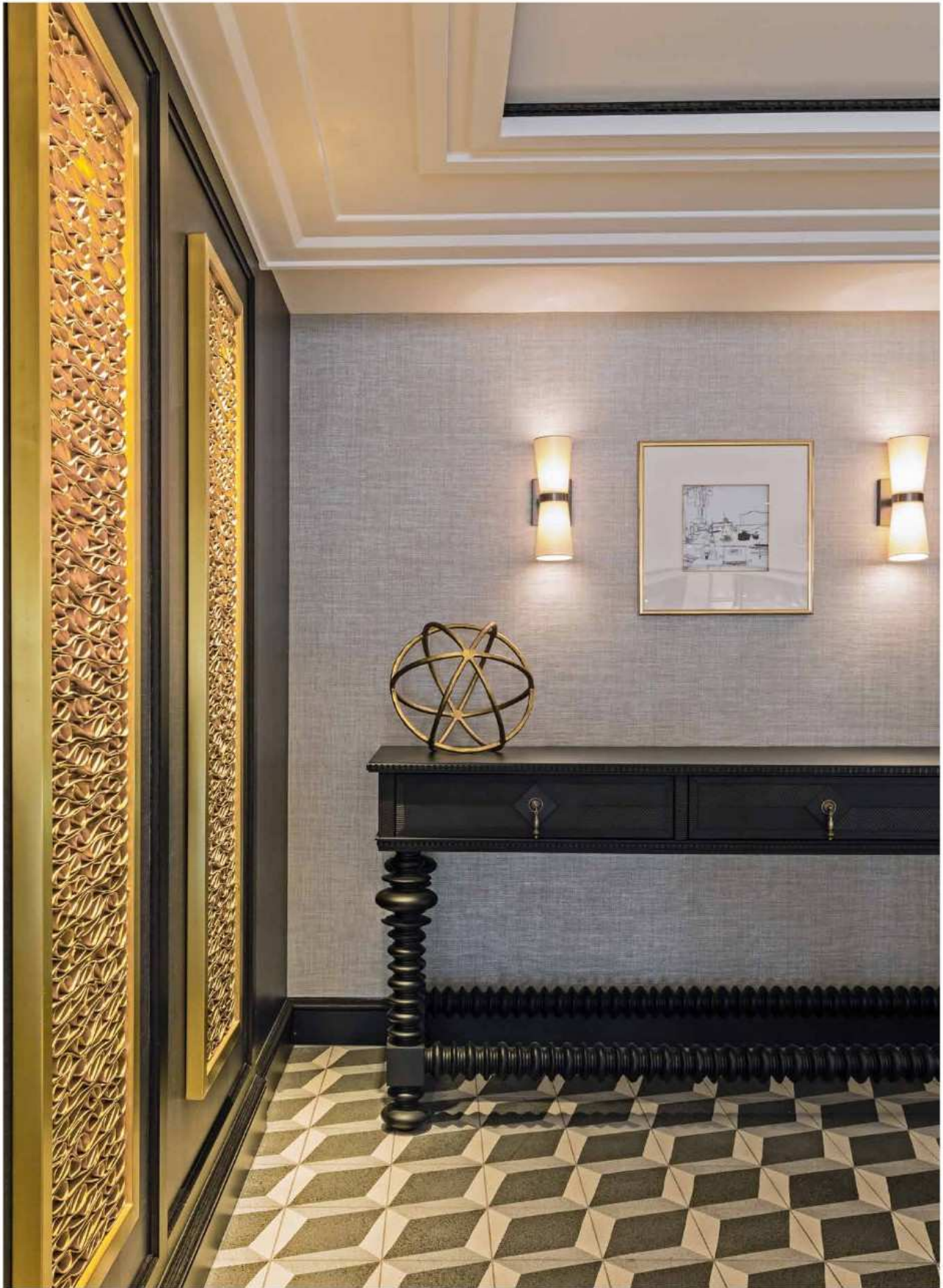
THE BEST OF THE BEST.

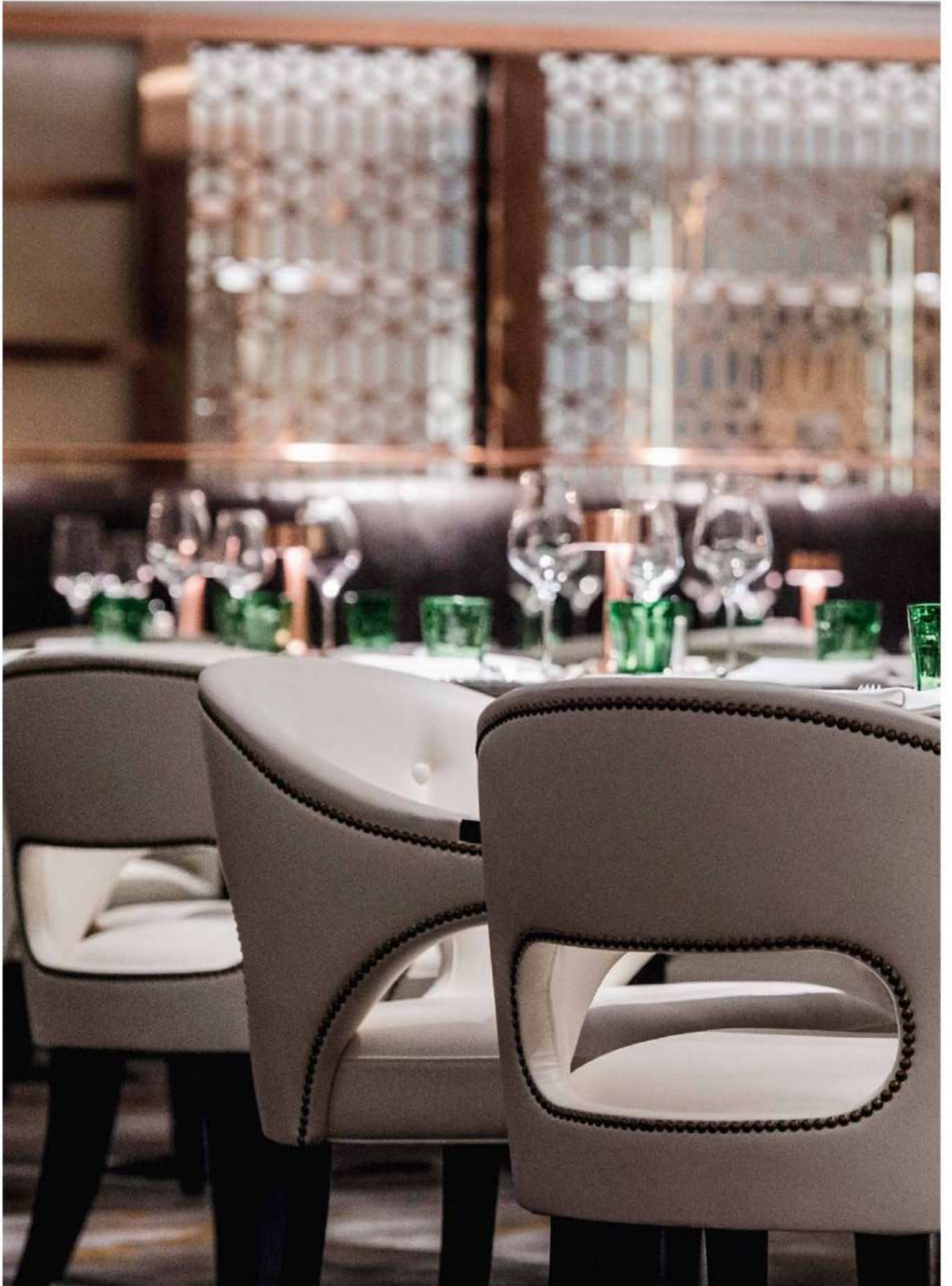


Check in and experience unparalleled luxury. Astonishment in every suite. The finest materials at every turn. There is an incredible amount of space to spread out and enjoy. Many cabins on luxury river cruises measure just 156 square feet / 14.5 square meters. On the Riverside Mozart, the smallest suite measures a stately 219 square feet / 20 square meters and the largest delivers an expansive 860 square feet / 80 square meters. Plus, every suite includes a king-size bed. You won't find that on any other river line. This abundance of space is made possible by the ship's width of nearly 75 feet / 23 meters, the widest in the industry.

THE WALKING TRACK ON THE UPPER DECK IS THE PERFECT PLACE FOR EXERCISE WHEN YOU'RE NOT IN YOUR SUITE

but more on that later.







Enjoy.

CULINARY COLLECTION

Luxury means having a choice. On the Riverside Mozart, the choice is yours. Four different restaurants offer genuine culinary perfection and variety. As the ship moves from port to port, the specialties on board also change, inspired by the different regions along the Danube. Modern interpretations of dishes from the crown lands of the former Habsburg Empire of Austria-Hungary, as well as fine Italian pasta dishes or delicious tapas.





Breakfast is served in our

MARKETPLACE

Choose from a selection of egg dishes, meats and cheeses, homemade pastries – and, of course, apricot jam. For lunch you can enjoy a variety of dishes from our cooking stations and buffet. Since you are on holiday, why not treat yourself to a nice glass of Grüner Veltliner as well?

Or you can enjoy the

BARBECUE ON THE UPPER DECK,

where the Riverside Mozart chefs even have their own herb garden.





THE CHARMING BLUE

at the aft of the ship – just stroll in and treat yourself to a sandwich, a fresh waffle or a delicious milkshake.



THE BISTRO

whose design was inspired by a coffee house, is a popular place for a late breakfast or to satisfy your sweet tooth.

A COFFEE WITH SOMETHING SWEET
SIMPLY IS A MUST.



By night, the Bistro offers

TASTY TAPAS, CREATED WITH LOCAL AND SEASONAL
INGREDIENTS.





WATERSIDE,

where we serve a la carte in the evenings – and for those dishes, too, the chefs draw inspiration from the seasons on the Danube. Everything is accompanied by elegant regional wines, of course. Speaking with the laconic understatement of the Austrians:

EATING IS MORE THAN GETTING FULL!





VINTAGE ROOM



So enchanting, so exclusive and so elegantly styled – of course it is called vintage.
This entire experience is as high quality as the wines we serve with every sitting.





On selected evenings

OUR CHEFS CREATE A MEMORABLE MENU,

yet the wines, selected by our Head Sommelier, set the tone. The special dining table (maximum 12 guests) is complemented by velvet green armchairs, warm wood and enchanting artwork. Our guests create the ambience. After a memorable dining experience, you can continue your evening at the Palm Court where you will find a black Bösendorfer grand piano. Enjoying a drink or two in a convivial atmosphere while listening to one of Mozart's delicate and light piano sonatas, is a stylish way to end an unforgettable day on board the Riverside Mozart.





Train. Relax. Repeat.

SPORTS ON BOARD AND LOTS OF SPA

You don't have to sacrifice your fitness or wellness routine while on board. Enjoy a host of workout or spa opportunities to ensure you can indulge yet stay physically active. Whether you take a bike off ship, visit the fitness room, swim laps in the pool or sign up for a relaxing massage, your time aboard the Riverside Mozart will not only engage your mind but your body as well.





THE POOL'S COUNTER-CURRENT SYSTEM CHALLENGES YOU TO CHALLENGE YOURSELF.

The track on the Upper Deck is perfect for jogging or walking. Ready for a sauna or steam bath? Anytime. There are two areas on the Riverside Mozart: for men and for women, each with a Finnish sauna and steam room. Get a massage or a facial or have your hair styled. Do it all and then say:

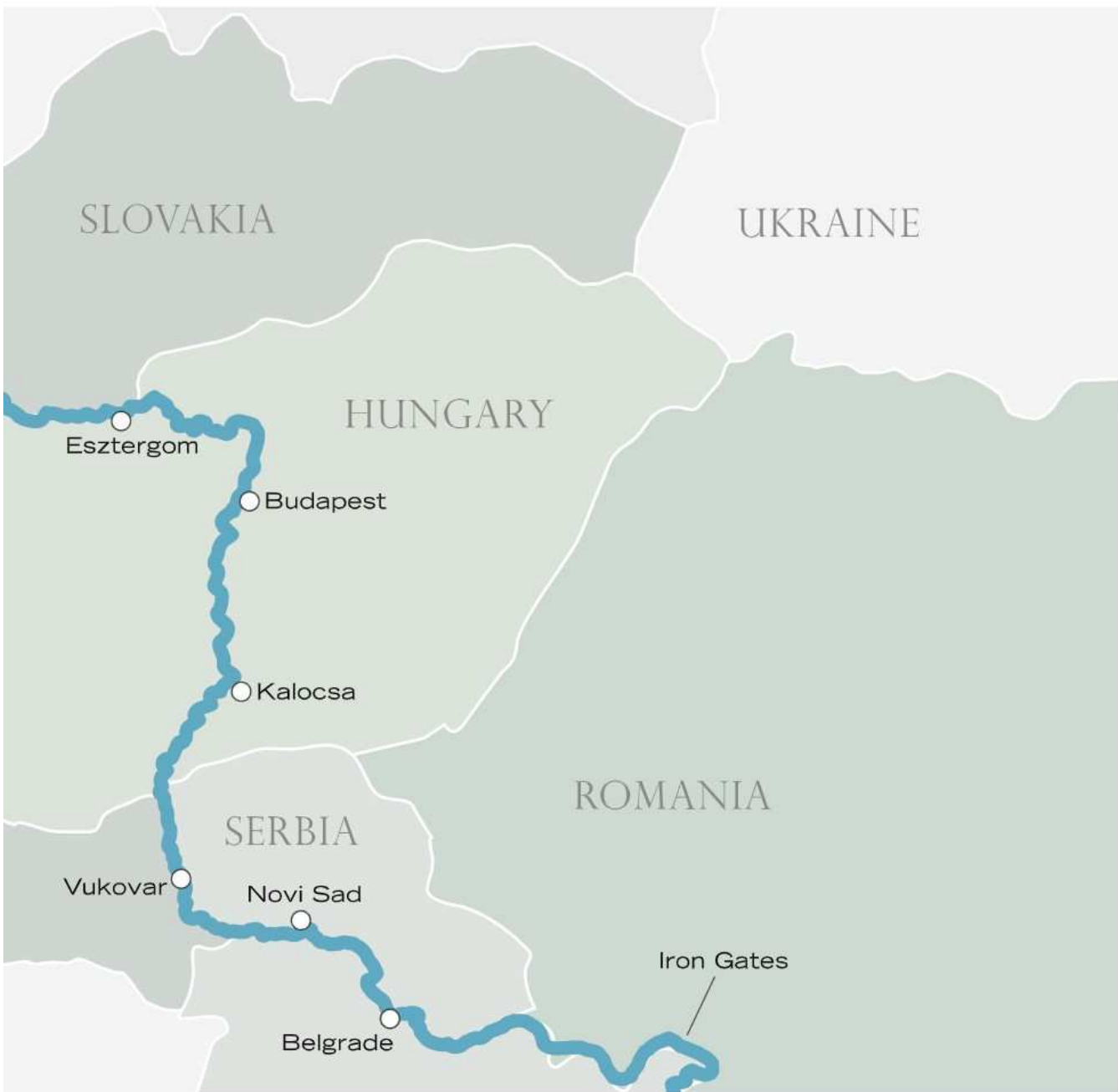
AH, LIFE IS BEAUTIFUL!



Experience

THE DANUBE

It served as a trade route for goods. It has been sung about and written about. Johann Strauss dedicated a famous waltz to it. The Austrian writer Bettina Balàka made it the setting of a successful crime novel (“Eisflüstern”).



Others joked her into the Guinness Book of Records with one word:

DONAUDAMPFSCHIFFFAHRTSELEKTRIZITÄTENHAUPT-
BETRIEBSWERKBAUUNTERBEAMTENGESELLSCHAFT



DANUBE OR DONUT?



In the Schlägener Schlinge (Schlögen Loop), not far from Passau, the upper Danube winds almost dramatically into a donut. The ship sails through this fascinating loop for about 20 minutes. The shrewd Upper Austrians named the Schlägener Schlinge in 2008 as the "Natural Wonder of Upper Austria".

INSTAGRAM SENDS ITS REGARDS!



MELK ABBEY

Does anyone still remember Adson of Melk?

Right, that's the main character in the novel

THE NAME OF THE ROSE.



The story begins in Melk Abbey and ends in its breathtaking library, in whose 12 rooms more than 100,000 volumes stand in fine order, virtually piling up. (Here, the word “piling up” still has an entirely positive meaning!) Melk Abbey is one of the most magnificent examples of marble, gilded wood, stucco and finely mastered frescoes. Built in 1746 by an order of the Benedictine monks, the monastery is perched on a rock nearly 200 feet / 60 meters above the ground. When you stand on the Altane (the great terrace of the monastery) the view of the Danube and the town of Melk almost brings tears of emotion to your eyes.

WHAT A VIEW!



There may be longer rivers in Europe, such as the Volga, or more economically important ones, like the Rhine.

YET AS A NATURAL BEAUTY,
THE DANUBE IS UNSURPASSED.

Sometimes it flows quietly, sometimes it widens out like a lake, and sometimes its waters swirl through narrow valleys. It is lined with lush greenery and offers the most beautiful pictures at any time of the year. Especially in autumn, the leaves shimmer in all shades of red before they fall off and create a beautiful menagerie on the ground, a mother nature mosaic. Ten countries line the Danube – through their impressive history they have left behind architecturally amazing cities, towns and villages. Here, Romans and Barbarians and Christians and Jews and Muslims met each other. And today monasteries and cathedrals and synagogues and minarets stand in their place. Since antiquity, the Danube has mediated between cultures and sometimes divided them. It flows 1,383 miles / 2,226 kilometers between Passau and the Black Sea. Franz I was the name of the passenger ship that first brought travellers back and forth between Vienna and Budapest in 1830. Today, the Danube is a must for river cruise travellers.





WACHAU VALLEY

What were the robber barons doing in the little rose garden? What makes Dürnstein unique? And anyway, what do you do as a river cruiser in the Wachau? Quite simple: enjoy, enjoy and enjoy again. The Wachau Valley is pastoral perfection. A synthesis of nature's arts: rugged mountains almost 3,000 feet / 900 meters high, terraces for winegrowing, and churches and castles from the Romanesque, Gothic and Baroque eras.

NO WONDER UNESCO HAS PLACED ITS PROTECTIVE HANDS OVER THIS WORLD HERITAGE SITE.







More than 18 miles / 30 kilometers you will sail, yet a single minute you won't want to miss. The steep slopes keep out cold winds and radiate the heat of the sun into the evening. Wine and fruit grows here as in the biblical stories of Adam and Eve. The best apricots come from here and find their way into chocolates, delicious dumplings, jam and noble brandy. Simply mouth-watering, don't you think?

GOOD! COME ABOARD.
WE WILL SPOIL YOU WITH
THESE DELICACIES.





DÜRNSTEIN AND THE SINGER

What would Vienna be if there had not been the singer Blondel? And above all, how would King Richard the Lionheart himself have perished without his faithful singer? King Richard was held captive by the Kuenring knights for three months during his crusade. Blondel, it is said, went from town to town and from castle to castle to find his missing commander. And he did: he recognized him by his voice singing an English song at Dürnstein Castle. The German Emperor Henry VI and the Babenberg Duke Leopold V set him free for 7,700 pounds of silver. The ransom was also used to finance building projects in Vienna and Wiener Neustadt. Today the castle is a ruin not to be missed. It is located above the charming village of Dürnstein. Charming? Yes, if only because of its narrow streets and canons' monastery, whose blue church tower is also known as "God's Pointing Finger".



KREMS

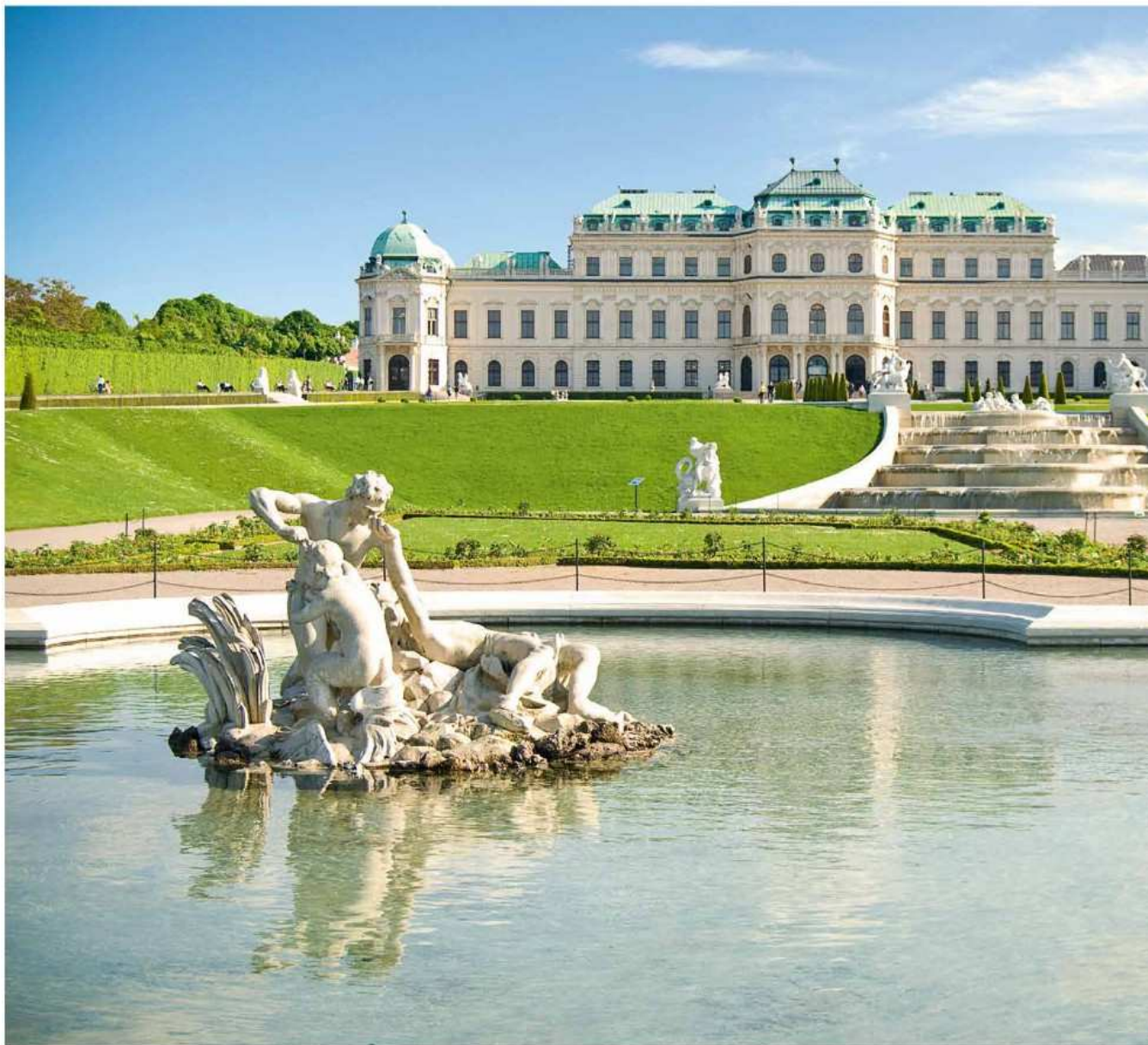
In order to understand Krems and, above all, to appreciate it, you must look at its history: The city was a trading center in ancient times. Its well-known weekly markets sold cloth, wool, skins, wrought iron, copper, tin, swords, millstones, poppies, pepper, saffron, nuts as well as spices.





Above all, salt was sold here from as far afield as Burgenland and Bohemia. In the tobacco factory in Krems, 75,000 Virginia cigars were still being produced annually in 1920. The town is considered one of the most ornate in Austria, and one of its special places is the Körnermarkt. Parts of the tobacco factory are now used for the university and the charming Kunsthalle,

FEATURING MODERN AND CONTEMPORARY
AUSTRIAN ART.



VIENNA

This is the city of classical music. It's Mozart and Strauss. It's street art on a sandy beach and fun in the countryside. It's bohemia and bourgeoisie and the finest baroque. And, of course, Art Nouveau. It's bad-tempered waiters in great coffee houses. It's Sigmund Freud and Gustav Klimt and Adolf Loos and Friedensreich Hundertwasser and Sisi and many others.

It is the Spanish Riding School, an event for horse lovers. And it is the city of Schmah (jokes anyone?) and scandals, on which the Viennese feast like cows on fresh grass on the alpine pasture. Last but not least: Vienna is the city on the Danube, although it was not always so. The Viennese Danube riverfront is an artificial structure that was only created in the 19th century. Before that, the Danube flowed past Vienna in many arms through floodplains and uninhabited areas. Today, the Riverside Mozart docks right by the city. And then it begins. Marvel, wonder and rejoice. Vienna is a dream.



BRATISLAVA

Once understated and unknown, since the turn of the millennium it has become something of a pearl on the Danube alongside Vienna and Budapest. Small, quaint and quiet, it shows its splendor at the castle, but also and especially in the old town where you will find fine buildings, such as the rococo Palais Esterházy, where the Russian composer Anton Rubinstein once lived. Yet all this grandeur is rivalled by a canal worker, of all people, who speaks for the humor of the Slovaks. They have dedicated a bronze monument to him. Cumil (Man at Work) is the name of the sculpture by artist Viktor Hulík. He mischievously looks out of a manhole cover at passers-by like a gawker. Subtle humour in the face of grand statues – this is a theme in this neat city.







BUDAPEST

It is no coincidence that many filmmakers have chosen Budapest as a backdrop.



Take *Evita* (1996), for example. Most of the scenes were shot not in Buenos Aires, but in Budapest. Anyone walking through the city, in the shadow of the State Opera House or across elegant Szabadság tér (Freedom Square) in the V. district, sees and feels it immediately. Budapest impresses. It is a metropolis and a spa city. It is Paris, Florence and Vienna in one. Many buildings were copied here. In fact, the Palais Batthyány is an exact copy of the Palazzo Strozzi in Florence.





A must:

THE CASTLE DISTRICT.

Pastel-coloured houses, built by their owners to be close to the Royal Palace. Or the National Gallery. Or the Labyrinth: it also served as a prison. Its most famous inmate, Vlad Tepes from Transylvania, who went down in history and stories as Count Dracula. And another suggestion. It is best to simply drift through Budapest. Then you will always come across enchanting stores like the Madison Perfumery, which is housed in the rooms of a 19th-century pharmacy. Not only are the fragrances enchanting, but the furniture and accessories in the back room too – all of which are original.



CONNOISSEUR'S CLUB

"The cultured man never regrets a pleasure. The uncultured man does not even know what pleasure is." A bonmot of Oscar Wilde. In this stylish smokers' lounge (completely self-contained), culture and enjoyment enter into a symbiosis. Here, you could imagine Ernest Hemingway enjoying a Cohiba and one of the best whiskies or armagnacs. Or a fine vintage wine. The perfect place after an excursion or a fine dinner – especially during the cooler months.







LUXURY IS LINGERING WITH NEWFOUND FRIENDS

A drink at the bar or enjoying a piano sonata by Mozart at our Bösendorfer grand piano. These are classic moments of company, conviviality and good conversation.









TO SLEEP IS TO LIVE

No matter which suite you choose aboard this special ship, you will always make the right choice. The reason is simple: nothing has been spared. The quality of the fabrics and materials is visible, tangible and undeniable. White marble, green velvet and sumptuous silk. Every night you will curl up in a bed covered by the finest cotton linens. In each suite, a butler will take care of your personal well-being, whatever your wish may be. Truth be told, after a night on the Riverside Mozart, you will declare:

LIFE IS BEAUTIFUL!



THE OWNER'S SUITE

A dream that spans 860 square feet / 80 square meters – the Mozart Suite combines with the Riverside Suite to form the Owner's Suite. Two bedrooms, two bathrooms and a stylish living room. Sit by the fireplace and read a book. Dine privately with your family. Work a bit at the desk before you go out and play.



This is a space that lets you go from casual to haute couture with little effort. Watch television as we wash, iron and make your clothes worthy of a night with royalty.

THE MOZART SUITE

The great composer created a feeling of space with sound. Enjoy spaciousness in the suite carrying his name. It offers over 645 square feet / 60 square meters – and the same services as the Owner's Suite. Masterful details include a French balcony, marble-framed fireplace and minibar. Black-and-white photographs and small sculptures lend an artful feeling to every room. The king-size bed looks out on the mighty Danube.

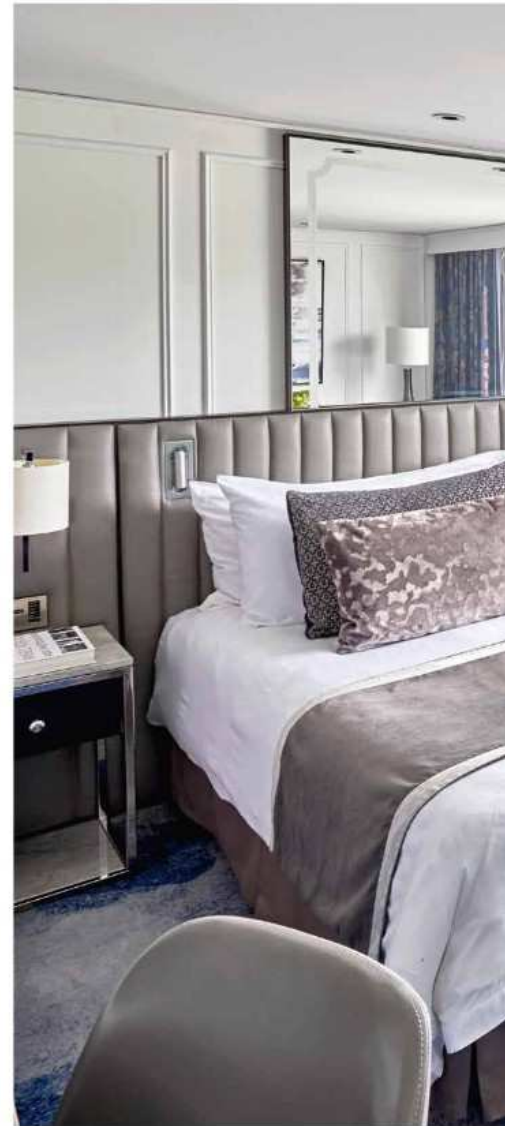
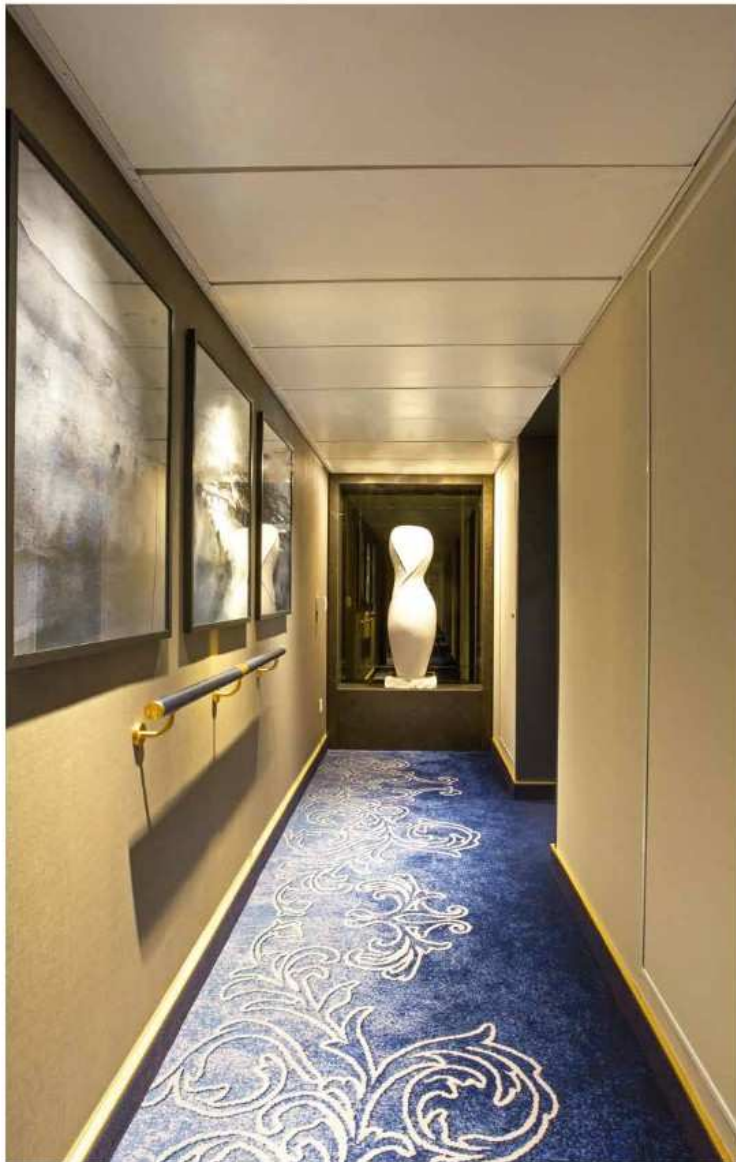
WAKING UP TO THIS VIEW
IS SIMPLY WONDERFUL.





THE PENTHOUSE SUITE

Seahorses enjoy the peace and quiet and like to retreat. And you can do just that in our Penthouse Suites on the Seahorse Deck.





They are exceptionally comfortable at 323 square feet / 30 square meters and allow for three people to travel together.

LIKE THE MOZART AND OWNER'S SUITES,
THEY HAVE LARGER BATHROOMS.



THE RIVERSIDE AND SYMPHONY SUITE “NOMEN EST OMEN”: THE RIVER IS ALWAYS IN SIGHT.

Our Riverside Suites (219 square feet / 20 square meters) and Symphony Suite (204 square feet / 19 square meters) offer a French balcony and a flat-screen HD TV to relax to in addition to the sound of the river.

Sleep together or separately, as the bed can be configured as a king or two twins. The choice is yours. Maybe depending on the night.



THE HARMONY SUITE

In the end, it's all about one thing: feeling comfortable in your own space. These suites on the lower deck measure 219 square feet / 20 square meters, have fixed windows and are downright cozy.





Watch your favourite movie, read or write in your journal – whatever helps you to relax and recharge.

YOU WILL FIND COMPLETE HARMONY
ON YOUR RIVER CRUISE HOLIDAY.



HAVE WE
SPARKED YOUR
INTEREST?
RIVERSIDE
MOZART
IS LOOKING
FORWARD
TO WELCOME
YOU ON BOARD.





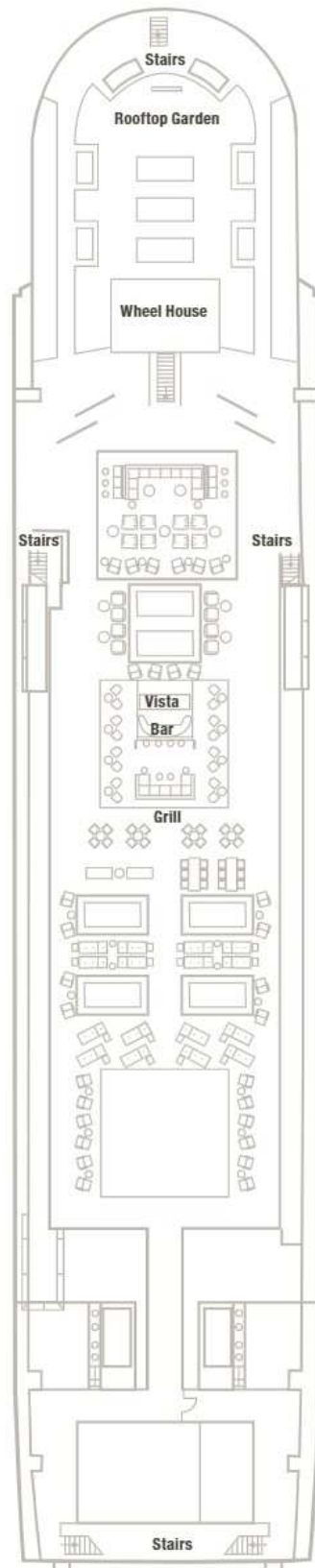
WHY RIVERSIDE?

Riverside is the only true luxury river cruise line in Europe. The standard of all-inclusive luxuries, combined with the core pillars of the Riverside Experience – exceptional Service, Space, Quality, Choices and Destinations – delivers superior value among all European river lines.

RIVERSIDE MOZART	5-STAR SEGMENT	4-STAR SEGMENT
2 CREWMEMBERS FOR	2 CREWMEMBERS FOR	2 CREWMEMBERS FOR
4 GUESTS	5-6 GUESTS	6-8 GUESTS

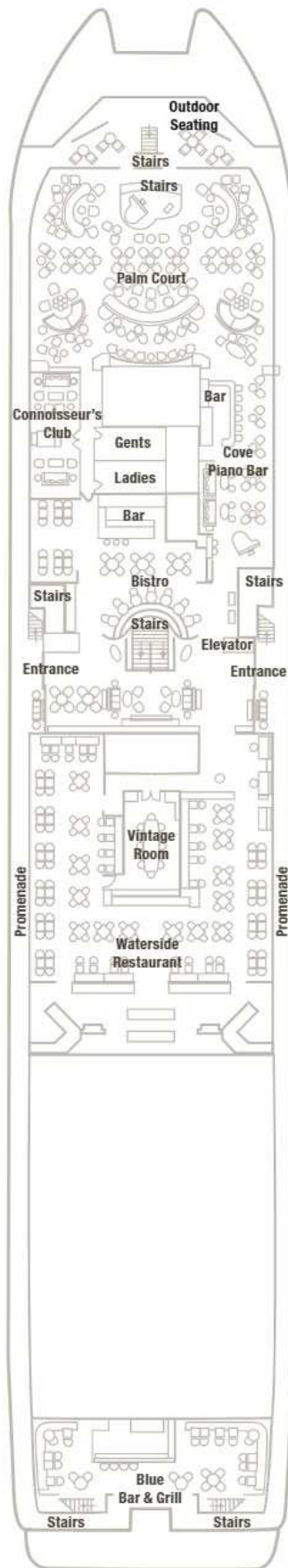
	RIVERSIDE MOZART	5-STAR SEGMENT	4-STAR SEGMENT
DINING			
NUMBER OF DINING VENUES ON BOARD	5	2 - 3	1 - 2
DINING TIMES	open	fixed times	fixed times
FOOD PREPARATION	fresh/locally sourced and prepared a-la-minute	more frozen items and not prepared a-la-minute	more frozen items and not prepared a-la-minute
24-HOUR IN-SUITE DINING	yes	typically not	no
SHORE EXCURSIONS			
CHOICE OF INDIVIDUAL SHORE EXCURSIONS	yes	yes	no
GRATUITY FOR GUIDE AND BUS DRIVER	included	typically not included	not included
GUEST ACCOMMODATION			
NUMBER OF GUESTS	162	154 - 168	190 - 212
SMALLEST SUITE	215 sq ft 18.9 sq m	156 - 161 sq ft 14.5 - 14.9 sq m	130 - 135 sq ft 12.0 - 12.5 sq m
LARGEST SUITE	883 sq ft 82.03 sq m	300 - 475 sq ft 27.9 - 44.1 sq m	300 - 445 sq ft 27.9 - 41.3 sq m
24-HOUR BUTLER-SERVICE	for every guest	only for guests in Top Suites	no Butler-Service
CRUISE ITINERARIES			
LENGTH OF CRUISE	3-, 4-, 5-, 7-, 10-, 11-, 14-night cruises	most itineraries 7+ night cruises	7+ night cruises only

DECK 4



VISTA

- Covered Lounge
- Rooftop Garden
- Vista Bar
- Grill
- Wheel House



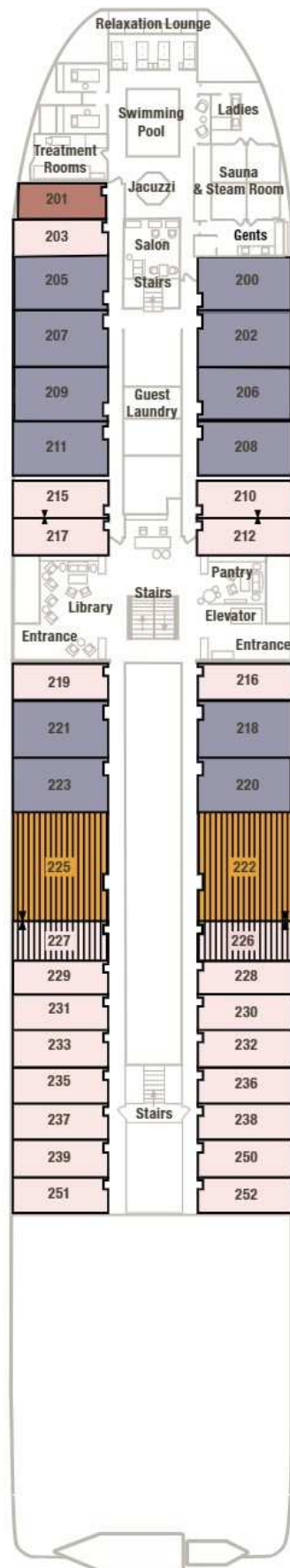
DECK 3

RIVERSIDE

- Wrap-around Promenade
- Bistro
- Blue Bar & Grill
- Palm Court
- Cove Piano Bar
- Vintage Room
- Waterside Restaurant
- Connoisseur's Club

SPECIFICATIONS

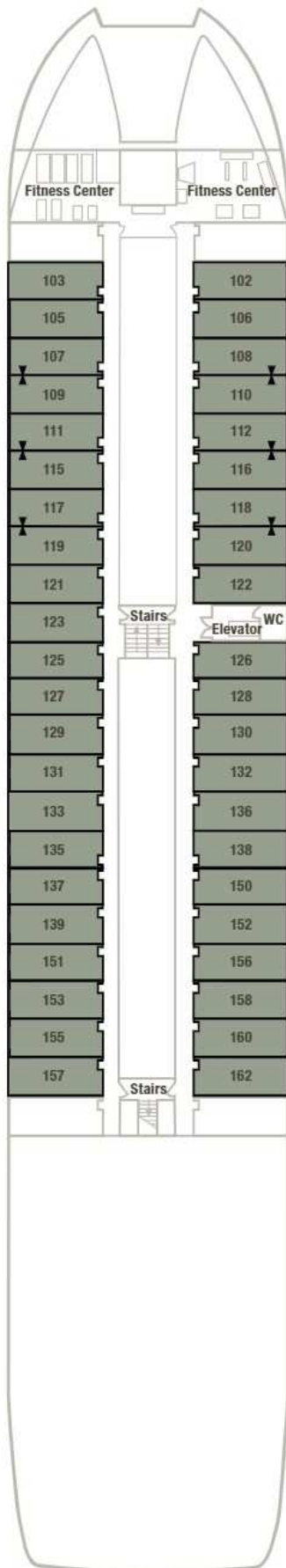
- Guests capacity 162
- Staff to Guest ratio 1:1.97
- Total crew 82
- Length 395 ft / 120.4 m
- Width 75.1 ft / 22.9 m



DECK 2

SEAHORSE

- SPA
- Salon
- Library
- Reception
- Sauna / Steam Room
- Swimming Pool
- Jacuzzi



DECK 1

HARMONY

- Fitness Center

SUITE CATEGORIES

- Owner's Suite
 883 square feet / 82 square meters
- Mozart Suite
 667 square feet / 61.6 square meters
- Penthouse Suite
 333 square feet / 30.6 square meters
- Riverside Suite
 219 square feet / 20.3 square meters
- Symphony Suite
 215 square feet / 18.9 square meters
- Harmony Suite
 219 square feet / 20.3 square meters

RIVERSIDE MOZART

- Length: 395.14 feet/120.44 meters
- Width: 74.97 feet/22.85 metres
- Year Built: 1987 – completely renovated in 2016
- Registry: Germany
- Guests: 162
- Crew: 82
- Suites: 81
- Decks: Harmony Deck 1, Seahorse Deck 2, Riverside Deck 3, Vista Deck 4

WATERSIDE RESTAURANT – RIVERSIDE DECK 3 MIDSHIP

- Breakfast and Lunch

Enjoy extensive buffet-style breakfast and lunch selections in our Marketplace.

- Dinner (open seating)

Our talented chefs will spoil you with fresh and innovative dishes inspired by the four seasons along the Danube. Great attention is placed on selecting wines from the regions visited.

BLUE BAR & GRILL – RIVERSIDE DECK 3 AFT

- Light Lunch, Afternoon Snacks

This charming eatery at the back of the Promenade offers a lighter lunch option as well as a spot for an afternoon nibble – freshly prepared sandwiches, toasts, burgers and salads as well as delicious tartlets, waffles and milkshakes to satisfy your sweet tooth.

BISTRO – RIVERSIDE DECK 3 MIDSHIP

- Late-Riser Breakfast, Light Lunch, Dinner

The popular Bistro was inspired by coffee houses throughout Europe. During the day we offer a selection of homemade pastries, ice cream, cold cuts and cheeses, which are accompanied by a specialty coffee, creamy milkshake or delectable glass of wine. In the evening, the Bistro transforms into a tapas venue that focuses on local products and country-specific flavours.

VINTAGE ROOM – RIVERSIDE DECK 3 MIDSHIP

- Exclusive dining experience for up to 12 guests – by reservation only

If you are looking for a very special culinary experience, this is the perfect place for it. Exclusive wines are paired with exquisite food and can be enjoyed with fellow gourmets.

VISTA GRILL – VISTA DECK 4 MIDSHIP

- Lunch (weather permitting)

Our al-fresco restaurant on the Vista Deck offers a wonderful opportunity for lunch while enjoying the perfect view of landscapes, villages and towns along the Danube.

VISTA DECK 4

- Comfortable Lounge
- Large outdoor television screen
- Cosy sun-loungers
- Rooftop garden

CONNOISSEUR'S CLUB – RIVERSIDE DECK 3 FORWARD (PORTSIDE)

- An elegant and classic place to smoke a good cigar and sip a glass of Armagnac or Cognac

COVE PIANO BAR – RIVERSIDE DECK 3 FORWARD (STARBOARDSIDE)

- Inspired by the Botanist Bars of our Seaside Collection, our passionate mixologists combine tasty herbs, fresh fruits, colorful flowers, and exotic spices with premium spirits and also non-alcoholic beverages. The entire experience is accompanied by atmospheric piano music.

VISTA BAR – VISTA DECK 4 MIDSHIP

- This remarkable location features delectable drinks and a very special ingredient: the best view on board.

GENERAL SUITE SERVICES

- Butler service
- Luggage packing/repacking (upon request)
- Daily hors d'oeuvres

OWNER'S SUITE SEAHORSE DECK 2

- 883 square feet/82 square meters
- 2-bedroom suite with connecting door
- Accommodates up to four guests
- Two bedrooms with two en suite bathrooms
- Entrance hall
- Separate living/dining area
- Guest toilet
- Wide French balcony

LIVING/DINING AREA

- Spacious living area with sofa and two armchairs
- Marble fireplace with fire effect
- 40" flat-screen HD TV
- Dining table for four
- Espresso coffee machine
- Writing desk
- Minibar

MAIN BEDROOM

- River-facing king-size bed
- King-size pillows
- Bed linen made of finest cotton
- 220-volt electricity
- USB sockets
- Walk-in closet
- Flat-screen HD TV
- In-room safe
- French balcony

SECOND BEDROOM WITH CONNECTING DOOR

- King-size bed (convertible into two single beds)
- King-size pillows
- Bed linen made of finest cotton
- 220-volt electricity
- USB sockets
- Closet
- Sofa
- Height-adjustable dining/coffee table
- Desk/bar area with minibar
- Espresso coffee maker
- 40" flat-screen HD TV
- In-room safe
- French balcony

MAIN BATHROOM

- Double vanity with generous storage space
- Separate marble table with vanity mirror and seating
- Glass-enclosed rain shower
- Bathtub
- Luxurious cloth bathrobes
- Slippers
- High-quality personal care products
- Hair dryer
- 220-volt electricity

SECOND BATHROOM

- Single vanity
- Glass-enclosed rain shower
- Luxurious terry bathrobes
- Slippers
- High-quality personal care products
- Hair dryer
- 220-volt electricity

SPECIAL SERVICES

- Complimentary ironing service
- Complimentary laundry service
- Complimentary limosine transfers

MOZART SUITE
SEAHORSE DECK 2

- 667 square feet/61.6 square meters
- Accommodates up to two guests
- Wide French balcony

LIVING/DINING AREA

- Spacious living area with sofa and two armchairs
- Marble fireplace with fire effect
- 40" flat-screen HD TV
- Dining table for 4 people
- Minibar
- Espresso coffee machine
- Writing desk
- Guest toilet
- Wide French balcony

BEDROOM

- River-facing king-size bed
- King-size pillows
- Bed linen made of finest cotton
- 220-volt electricity
- USB sockets
- Walk-in closet
- Flat-screen HD TV
- In-room Safe
- French balcony

BATHROOM

- Double vanity with generous storage space
- Separate marble table with vanity mirror and seating
- Glass-enclosed rain shower
- Bathtub
- Luxurious terry bathrobes
- Slippers
- High-quality personal care products
- Hair dryer
- 220-volt electricity

SPECIAL SERVICES

- Complimentary ironing service
- Complimentary laundry service
- Complimentary limosine transfers

PENTHOUSE SUITE
SEAHORSE DECK 2

- 333 square feet/30.6 square meters
- Accommodates up to three guests
- French balcony

BEDROOM

- King-size bed (convertible into two single beds)
- King-size pillows
- Bed linen made of finest cotton
- 220-volt electricity
- USB sockets
- Pull-out sofa
- Walk-in closet
- In-room safe
- Writing desk
- 40" flat-screen HD TV
- Minibar
- Espresso coffee maker
- Height-adjustable coffee/dining table
- French balcony

BATHROOM

- Double vanity
- Glass-enclosed rain shower
- Bathtub
- Luxurious terry bathrobes
- Slippers
- High-quality personal care products
- Hair dryer
- 220-volt electricity

SPECIAL SERVICE

- Complimentary limosine transfers

RIVERSIDE SUITE
SEAHORSE DECK 2

- 219 square feet/20.3 square meters
- Accommodates up to two guests
- French balcony

BEDROOM

- King-size bed (convertible into two twin beds)
- King-size pillows
- Bed linen made of finest cotton
- 220-volt electricity
- USB sockets
- Closet
- Sofa
- Height-adjustable dining/coffee table
- Desk/bar area with minibar
- Espresso coffee maker
- 40" flat-screen HD TV
- In-room safe
- French balcony

BATHROOM

- Single vanity
- Glass-enclosed rain shower
- Luxurious terry bathrobes
- Slippers
- High-quality toiletries
- Hair dryer
- 220-volt electricity

SYMPHONY SUITE
SEAHORSE DECK 2

- 215 square feet/18.9 square meters
- Accommodates up to two guests
- French balcony

BEDROOM

- King-size bed (convertible into two twin beds)
- King-size pillows
- Bed linen made of finest cotton
- 220-volt electricity
- USB sockets
- Armchair
- Closet
- Height-adjustable dining/coffee table
- Minibar
- Espresso coffee maker
- 40" flat-screen HD TV
- In-room safe
- French balcony

BATHROOM

- Single vanity
- Glass-enclosed rain shower
- Luxurious terry bathrobes
- Slippers
- High-quality toiletries
- Hair dryer
- 220-volt electricity

HARMONY SUITE
HARMONY DECK 1

- 219 square feet/20.3 square meters
- Accommodates up to two guests
- Large fixed window

BEDROOM

- King-size bed (convertible into two twin beds)
- King-size pillows
- Bed linen made of finest cotton
- 220-volt electricity
- USB sockets
- Closet
- Sofa
- Height-adjustable dining/coffee table
- Desk/bar area with minibar
- Espresso coffee maker
- 40" flat-screen HD TV
- In-room safe
- Fixed window

BATHROOM

- Single vanity
- Glass-enclosed rain shower
- Luxurious terry bathrobes
- Slippers
- High-quality toiletries
- Hair dryer
- 220-volt electricity

FITNESS & SPA

- Indoor fitness center with Technogym® equipment
- Massage & body treatments
- Facial treatments
- Hair salon
- Male and female saunas
- Male and female steam rooms
- Counter-current swimming pool
- Jacuzzi
- Bicycles
- Nordic walking poles
- 395 feet/120.4 meters Walking track

GENERAL GUEST SERVICES

- 24-hour reception service
- Languages: English, German
- Check-in: 13.00; Check-out: 11.00
- Currency exchange
- Credit cards: Visa, Mastercard, American Express, EC card

Photo credits:

© Claus Brechenmacher & Reiner Baumann Photography / © AD Associates LLP 2022 /
© Werney Beyer Consulting

www.riverside-cruises.com, reservations@riverside-cruises.com, Phone: +34 928 063200

The first part of the document discusses the importance of maintaining accurate records of all transactions. It emphasizes that every receipt, invoice, and bill should be properly filed and indexed for easy retrieval. This not only helps in tracking expenses but also ensures compliance with tax regulations. The document provides a detailed checklist of items to be recorded, including dates, amounts, and descriptions of goods and services.

Next, the document outlines the process of reconciling bank statements with the company's financial records. It stresses the need to identify and explain any discrepancies between the two. This involves comparing the bank's record of deposits and withdrawals with the company's internal ledger. The document provides a step-by-step guide to performing a bank reconciliation, including how to use a reconciliation form and how to handle common issues like outstanding checks and bank errors.

The third section focuses on the management of accounts payable and receivable. It discusses the importance of timely payments to suppliers and the collection of payments from customers. The document provides strategies for improving cash flow, such as offering discounts for early payment and enforcing strict credit terms. It also includes a sample invoice and a collection letter to illustrate best practices in these areas.

Finally, the document concludes with a summary of key points and a call to action. It encourages the reader to implement the discussed practices immediately to ensure the financial health and success of their business. The document is signed by the author, who offers further assistance and contact information.

The first part of the document discusses the importance of maintaining accurate records of all transactions. It emphasizes that every receipt, invoice, and bill should be properly filed and indexed for easy retrieval. This not only helps in tracking expenses but also ensures compliance with tax regulations. The document further outlines the steps for conducting a regular audit of the accounts, highlighting the need for transparency and accountability in financial management.

In the second section, the author provides a detailed breakdown of the company's revenue streams and cost structures. This analysis is crucial for understanding the overall financial health and identifying areas for optimization. The text includes several tables and charts that illustrate the data, making it easier to interpret complex financial information. The author also discusses the impact of market fluctuations and offers strategies to mitigate potential risks.

The final part of the document focuses on future projections and strategic planning. It presents a clear vision for the company's growth and outlines the key initiatives that will drive success. The author concludes by reiterating the importance of staying agile and responsive to changing market conditions, while maintaining a strong focus on long-term sustainability and profitability.