



LE COMMANDANT CHARCOT

# POLAR HORIZONS

2025-2026

# WORDS FROM THE CAPTAINS

Our captains alternate at the helm of *Le Commandant Charcot*.  
With a wealth of experience in polar environments, their expertise comes  
with a touch of magic. Here, they share their personal insights into the voyage.



*"We offer activities for everyone. There's something for the contemplative and the sporty, the epicurean and the thirsty... of culture, naturally! It's the very concept of this ship."*

---

Captain  
Patrick Marchesseau



*"You can't just sail with arrogance in the polar zones. Nothing can be taken for granted in this dynamic environment. You realise how small we are compared in relation to our environment."*

---

Captain  
Étienne Garcia



*"I like the idea of a link between the scientists and our guests, particularly through the lectures. It's also thanks to them that Le Commandant Charcot is able to recover valuable data. And I like to remember this positive cycle."*

---

Captain  
Stanislas Devorsine

# Northeast Greenland's unexplored sea ice

Reykjavík • Reykjavík

15 days / 14 nights | 24th May and 7th June 2025 and 14th May 2026

From €21.470 <sup>(1)</sup>

Intense exploration at the start of the Arctic summer: sharp ridges on the coast of Blosseville, the icy shores near Ittoqqortoormiit, home to the last polar hunters, and the drifting ice of Northeast Greenland.



# ARCTIC





ARC

## In the ice of the Arctic, from Greenland to Svalbard

Reykjavík • Longyearbyen

17 days / 16 nights | 21st June 2025 and 28th May and 13th June 2026\*

From €25.780 <sup>(1)</sup>

To the north-east of Greenland, push back the frontiers of the transpolar drift and the pack ice. The unspoilt landscapes of Svalbard are revealed and, in turn, expose a wild and bewitching world.

*\*Departure on 13th June in reverse order.*



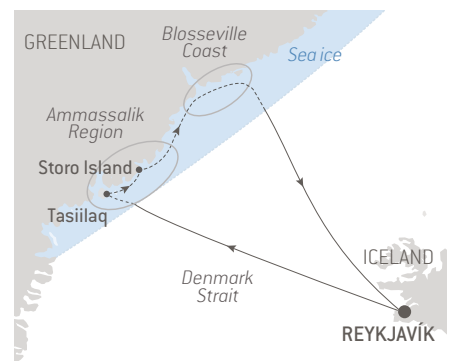
## Inuit spring of Ammassalik

Reykjavík • Reykjavík

11 days / 10 nights | 4th and 14th May 2025 and 4th May 2026

From €15.490 <sup>(1)</sup>

After the long winter, the landforms of Ammassalik and Blosseville are revealed under the ice. This season promises exceptional encounters with the Inuit people on the ice floes, between traditions and dog-sleigh rides.





TIC

## The Geographic North Pole

Longyearbyen · Longyearbyen

16 days / 15 nights | 22nd July and 6th August 2025 and 12th and 27th July, 11th and 27th August 2026

From €34.690 <sup>(1)</sup>

Will the quest for this mythical geographical point be the motivation for your next departure? Experience a patient journey 700km from land, where nature shows its majesty through ice and light.



## Transarctic, the quest for the two North Poles

Longyearbyen · Nome

21 days / 20 nights | 5th September 2025

From €46.440 <sup>(1)</sup>

Take an exclusive sea route from the Bering Strait to the frozen lands of Svalbard, with a team of scientists on board, and attempt to reach the North magnetic and geographical poles. A journey to the top!



# The emperor penguins of Weddell Sea

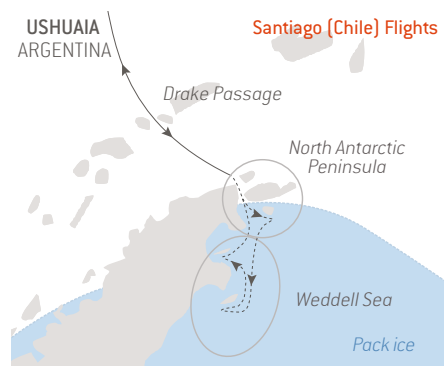
Ushuaia · Ushuaia

14 days / 12 nights on board | 30th October, 11th and 23rd November 2025

16 days / 14 nights | 19th December 2025

From €23.790 <sup>(1)</sup>

Almost inaccessible, the Weddell Sea reveals its infinite pack ice and tabular icebergs. At the heart of the immaculate landscapes, expect colonies of Adélie penguins, and perhaps the rare and magical sight of emperor penguins.



# In the wake of Jean-Baptiste Charcot

Ushuaia · Ushuaia

16 days / 14 nights on board | 5th December 2025 and 2nd January 2026

From €22.500 <sup>(1)</sup>

From the Peninsula to the Bellingshausen Sea, the 'ultimate continent' reveals the places that made the 'gentleman of the poles' a legend. These extreme conditions are also home to penguins, crabeater seals and Minke whales.



# ANTA



# Unexplored Antarctica between two continents

Ushuaia • Hobart

31 days / 29 nights | 16th January 2026

From €51.630 <sup>(1)</sup>

From the southernmost tip of the American continent to Australia, experience an unforgettable half-circumnavigation of Antarctica. Marie Byrd Land, the Ross Barrier Reef and Macquarie Island will be among the highlights of this journey.



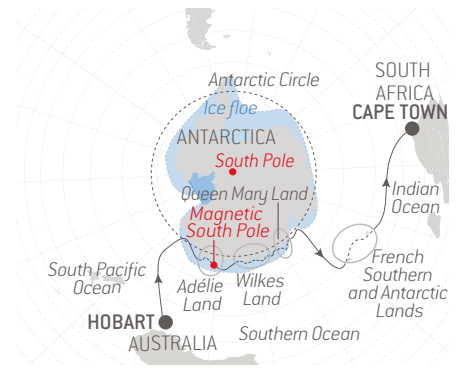
# Unexplored East Antarctica & French Southern Lands

Hobart • Le Cap

29 days / 28 nights | 17th February 2026

From €53.480 <sup>(1)</sup>

The east coast of Antarctica offers an incredible half-circumnavigation linking Tasmania to southern Africa. Between fast ice, drifting icebergs and the world's largest polar ice cap, wildlife reigns supreme.



# ARCTIC



# BEYOND POLAR EXPLORATION

5 experiences that only our polar exploration ship  
can offer in the Arctic and in Antarctica

## 1 REACHING THE INACCESSIBLE

The only passenger ship in the world with a **Polar 2 (PC2) classified hull**, *Le Commandant Charcot* can sail through multiyear ice all year round. Let yourself be surprised by **immersive itineraries** that invite guests to contemplate. In these breathtaking environments, the Greenlandic proverb '*Only time and ice are masters*' takes on its full meaning.

## 2 EXPERTS AND IMMERSION

Accompanying you on your journey, around **20 expert nature guides** are on hand to unravel polar history, landscapes, wildlife and flora. As for the officers, you can rest assured that they are very experienced at navigating in the ice. Kayaking, polar hiking on foot or snowshoes, polar diving without wetsuits, ice landings: experience **authentic connections with the powerful nature** of the Poles.

## 3 INSIDE/OUTSIDE: THE INVISIBLE FRONTIER

On board, staterooms and communal areas offer cosy **cocoons while being wide open to the grandiose scenery** and extreme environments that surround you. *The Blue Lagoon*, an openair lagoon heated using recovered energy; indoor swimming pool; snow cabin; detox bar within the spa; Cigar Lounge: *Le Commandant Charcot* features unique spaces that set her apart from the rest of our fleet.

## 4 THE ONE AND ONLY DUCASSE RESTAURANT AT SEA

*Nuna* ('Earth' in Greenlandic) features a menu dreamt up by the Michelin-starred chef Alain Ducasse, as well as presenting some of his **signature dishes**. Delicate flavours are combined with refined tableware to achieve **an exemplary level of excellence** in such isolated surroundings.

## 5 MORE ECO-FRIENDLY AND COMMITTED SAILINGS

Green Globe certified, the internationally recognised standard for sustainable tourism, *Le Commandant Charcot* uses the most **advanced technologies**. The aim is to reduce its environmental footprint as much as possible on the regions she visits, combining electric propulsion and liquefied natural gas.

With **two research laboratories**, by 2024, *Le Commandant Charcot* took on board more than 70 scientists working for more than 10 research institutes, including Ifremer and Geomar.

These icons are relevant to all cruises  
aboard *Le Commandant Charcot* :



Polar Expedition



Boots on loan



Parka complimentary



A team of nature guides



408 Avenue du Prado - 13008 Marseille - France

[www.ponant.com](http://www.ponant.com)

Licence 013060005