

Mein Schiff

A fleet to feel home.





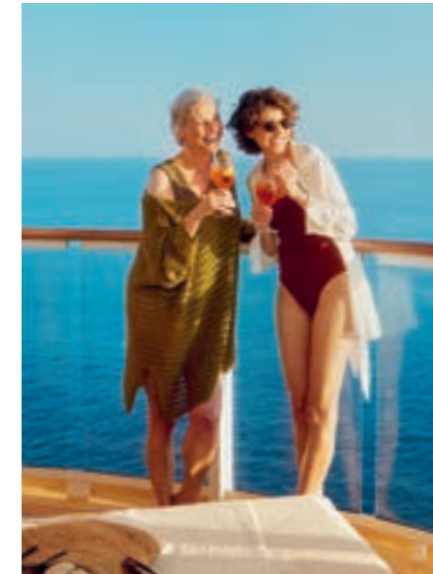
Dear Guests,
During your voyage with the *Mein Schiff*® fleet, we invite you to discover the world in the loveliest way: On land, unforgettable experiences await you in the most exciting regions of the world; on board, you leave everyday worries far behind and everything revolves around your well-being at every single moment. Allow us to inspire you over the following pages with charming destinations; enjoy the anticipation of the incomparable *Mein Schiff*® feeling, and take a first look at our new addition: In 2024 we are proud to welcome *Mein Schiff 7* to the most modern and environmentally friendly fleet in the world. We have a clear vision: In the long term, we want to offer emission-free and climate-neutral cruises and the first climate-neutral cruises by 2030. With this we would like to live up to our responsibility towards nature and the environment, and thus secure the future of sustainable travel.

We look forward to welcoming you on board soon.

Wybcke Meier

Chairperson of the executive board

A handwritten signature in white ink that reads 'Wybcke Meier'.



Every second is a moment of well-being:
Come aboard and experience
unforgettable moments.

Content.

Life on board

- 6 *Mein Schiff*® philosophy & comfort benefits
- 10 *Mein Schiff*® Premium inclusive benefits
- 14 *Mein Schiff*® exclusive services
- 16 Restaurants & bistros
- 22 Bars & lounges
- 26 Spa & gym
- 30 Entertainment
- 34 Families

The fleet

- 38 Sustainability
- 42 *Mein Schiff*® tariffs
- 44 *Mein Schiff*® fleet
- 46 Cabins & suites overview
- 52 Cabins & suites *Mein Schiff 1* and *Mein Schiff 2*
- 58 Cabins & suites *Mein Schiff 3* to *Mein Schiff 6*
- 64 Cabins & suites *Mein Schiff 7*

Destinations

- 70 Shore excursions
- 74 Travel destinations

Deck plans

- 78 Deck plans *Mein Schiff 1* and *Mein Schiff 2*
- 84 Deck plans *Mein Schiff 3* and *Mein Schiff 4*
- 90 Deck plans *Mein Schiff 5* and *Mein Schiff 6*
- 96 Deck plans *Mein Schiff 7*

- 102 General terms and conditions

A photograph of two women on a cruise ship deck. The woman on the left has blonde hair tied back and is wearing a green patterned top. The woman on the right has dark curly hair, wears sunglasses and a white cardigan over a black top, and is holding a glass of orange juice with a straw. They are both smiling and looking towards the right. The background shows a clear blue sky and the ocean.

Where your wishes set the course.

Our *Mein Schiff*® fleet sails to the loveliest regions of the world – and has only one goal: Your feeling of total well-being during every moment of your journey. To achieve this, we have designed our ships entirely in keeping with your desires and given them the required size. Because there is only space for outstanding services where there is plenty of room, so that all individual needs can be fulfilled. Come aboard and allow us to impress you with the most modern cruise fleet in the world, our numerous comfort benefits and the unique *Mein Schiff*® feeling.

So many reasons to feel good.

Try out new things and leave everyday cares far behind you; find inspiration in the expanse of the water and discover pure relaxation: Enjoy plenty of open space on board our fleet and boundless opportunities, in order to design each day of your holiday according to your wishes and feel absolutely wonderful at every moment.



As individual as you are.

When you join us on board, we offer you boundless possibilities in a relaxed atmosphere. Decide yourself, how you would like to enjoy your trip – and choose from a variety of *Mein Schiff*® Premium inclusive benefits without extra costs. For added comfort and privacy, the flexibly bookable *Mein Schiff*® exclusive services allow you to discover special benefits during your trip.

First class service. First class comfort.

We want you to feel at home on board. That's why we welcome you, from the moment you step aboard, with a warmth that is unparalleled in the industry. You don't need to worry about a thing – simply relax and indulge in the superb service from our friendly crew. The only thing you have to do is enjoy your comfort voyage to the full. And if you have a special wish or are feeling 'all at sea', we're here with a sympathetic ear to help you.

Relish with all your senses.

Savour your comfort voyage to the full – and feast on a variety of different gourmet highlights. Here we offer all that your palate desires, and perhaps you'll even have the chance to broaden your culinary horizons. Whether it's à-la-carte or buffet, sushi or steak, vegan or vegetarian – on board the *Mein Schiff*® comfort fleet, there's something to satisfy everyone's taste.

For body, spirit and soul.

It has never been so easy to be kind to yourself. In our spacious and modern gym and sauna areas you can concentrate completely on yourself. Every day you can decide afresh exactly how you do this: Are you keen to get your body actively into shape, or would you like to enjoy rest and relaxation for your body and soul?

Entertainment value: Very high.

On the *Mein Schiff*® comfort fleet there's no boredom at all. Look forward to interesting workshops, exciting lectures and readings, our show ensemble and special guest artists – for example from the worlds of theatre, music or acrobatics. We absolutely recommend: Experience our wide range of unforgettable shore excursions.

Travel with a good conscience.

The well-being of nature and the environment is very close to our hearts. That's why we are constantly working to achieve our sustainability goals and also to remain one of the most environmentally friendly cruise fleets in the future. So that you can travel on board with a good conscience.

A man and a woman are sitting on a wooden deck of a cruise ship, looking out at the vast blue ocean under a clear sky. The man is wearing a blue shirt and the woman is wearing a light blue top and white skirt. They are surrounded by several wooden bar stools. The deck has a glass railing and white support posts. The water is a deep blue, and the sky is a lighter blue with a few wispy clouds.

Our concept for that feeling of complete happiness.

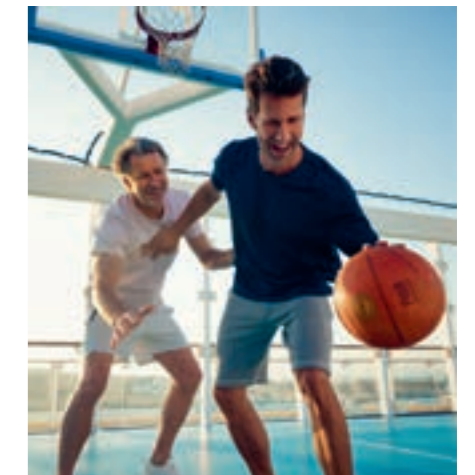
Your loveliest travel companion? The feeling of not having to worry about anything, because everything has been taken care of and none of it costs extra. With our fleet, thanks to the concept of the *Mein Schiff*® Premium inclusive benefits, you can enjoy every day entirely according to your taste and desires.

When everything is included for you, it's got to be *Mein Schiff*®.

With the multifaceted *Mein Schiff*® Premium inclusive benefits in all tariffs, your holiday becomes a relaxing comfort voyage. Whether it's a 5-course set meal, your favourite drink, varied entertainment or spa treatments: Everything on board our ships is included – without extra costs.

The *Mein Schiff*® Premium inclusive benefits

-  A wide selection of à-la-carte and buffet restaurants
-  Advice and special range for allergy sufferers
-  Varied sports course programme for you
-  Flexible meal times in all restaurants
-  Espresso machine in every cabin
-  Inspiring onboard programme for all tastes
-  Permanent wide selection of brand name drinks and cocktails
-  Cabin service twice daily
-  High-quality and varied entertainment programme
-  Large selection of tea, coffee and pastry specialities
-  Luggage service both to and from your cabin
-  Age-appropriate, wide-ranging supervision of kids and teens
-  Ice-cream specialities from our premium partner Bruno Gelato
-  Spacious and modern sauna and gym area
-  Tips are included



Ancillary costs check

Services	Other providers	<i>Mein Schiff</i> ®
2 glasses of wine	14.00 €	0.00 €
3 soft drinks	11.00 €	0.00 €
1 plate of grilled fish	18.00 €	0.00 €
2 cocktails	20.00 €	0.00 €
2 pieces of cake	8.00 €	0.00 €
2 cups of cappuccino	7.00 €	0.00 €
Sauna & gym	30.00 €	0.00 €
Extra costs per day	108.00 €	0.00 €
Extra costs during a 7-day cruise	756.00 €* 	0.00 €

*Average savings thanks to *Mein Schiff*® Premium inclusive benefits, calculated on the basis of 2 persons, based on a 7-day cruise.

For that extra special touch – our exclusive services.

You would like to have even more comfort, open space and gourmet delights during your trip? Then our varied *Mein Schiff*® exclusive services will fulfil all your desires. Choose from a comprehensive programme of extras that perfectly match your personal preferences, and also look forward to unforgettable moments of well-being.

The *Mein Schiff*® exclusive services

- + 

Exclusive area on the sun deck in our relaxation compartments
- + 

Private gourmet delights in your cabin thanks to our 24h diamond service
- + 

Digital newspaper service
- + 

A wide variety of specialty restaurants for unforgettable moments of gourmet pleasure
- + 

Diverse gourmet offers for foodies
- + 

Excellent well-being moments during relaxing massages and regenerating cosmetic treatments
- + 

The services of a personal trainer as well as individual health checks and nutrition consultation
- + 

Unforgettable experiences thanks to our varied range of shore excursions
- + 

Even more well-being with the Ganz Schön Gesund (Really Very Healthy) offer
- + 

Unique deals for special occasions on board
- + 

Individual internet deals
- + 

Early check-in on arrival day and day cabin on departure day
- + 

Convenient clothes washing service via the onboard laundry
- + 

Comfortable arrival and departure without suitcases with luggage service
- + 

“Große Freiheit” for plenty of space and gourmet pleasure in a unique atmosphere



From the private relaxation compartment to a relaxing massage – our exclusive services guarantee you very special moments.



En route to great gourmet moments.

When the fresh sea air or an eventful day filled with experiences whet your appetite, then simply head to our restaurants and bistros to enjoy gourmet delights. Without fixed meal times and seating plans, you can also enjoy the culinary diversity of our world on board. And our bars and lounges, with their extraordinary selection of drinks, invite you to raise a toast: To yourself, to life and a perfect holiday.



A new culinary experience – always worth discovering.



In the Atlantik – Mediterranean Restaurant we serve you a daily changing selection of delicacies in a relaxed ambience.

The colourful marketplace atmosphere and a great selection will whet your appetite in the Anckelmannsplatz – Buffet-Restaurant.



A trip with the *Mein Schiff*® fleet is always a warm invitation to embark on a culinary voyage of discovery. In as many as nine restaurants, you can enjoy a world of culinary delights – from rustic classics to modern interpretations of dishes – and of course at no extra cost.

You can look forward to varied à la carte menus in the Atlantik – Classic Restaurant and Atlantik – Mediterranean Restaurant. Italian delicacies await you in the Osteria – Pizza e Pasta. At the wok station in the Anckelmannsplatz – Buffet Restaurant you can put together your personal Asian favourites; and in the Eis Bar – Ice Cream you will also find a touch of la dolce vita in addition to your favourite flavour.

Our inclusive restaurants

Anckelmannsplatz – Buffet-Restaurant	•	1 2 3 4 5 6 7 8
Atlantik – Classic Restaurant	•	1 2 3 4 5 6 7 8
Atlantik – Mediterranean Restaurant	•	1 2 3 4 5 6 7 8
Backstube – Bakery Corner		1 2 3 4 5 6 7 8
Bosphorus Snackbar	•	1 2 3 4 5 6 7 8
Eis Bar – Ice cream	•	1 2 3 4 5 6 7 8
Fischmarkt – Fish Market Restaurant	••	1 2 3 4 5 6 7 8
Ganz Schön Gesund – Bistro	••	1 2 3 4 5 6 7 8
GOSCH Sylt – Fish restaurant	••	1 2 3 4 5 6 7 8
Osteria – Pizza e Pasta	••	1 2 3 4 5 6 7 8
Tag & Nacht – Bistro	•	1 2 3 4 5 6 7 8

• Table service • Outside area

¹ no outside area

Glorious moments of good taste.



In our speciality restaurant Hanami – Asian Cuisine by Tim Raue we delight your palate with creations from the Far East by the Berlin Michelin-starred chef.



You have something to celebrate on board or you just want to treat yourself to something very special? Then let us indulge you to your heart's content in our specialty restaurants. The supplement you pay for our exclusive culinary offer is definitely worth it, because the stars of gastronomy have created heavenly taste experiences for you. Enjoy the top cuisine of the Michelin-starred chef Theodor Falser at La Spezia – Italian Eatery. You can experience Far Eastern dining at Hanami – Asian Cuisine by Tim Raue. Or become active yourself in the Manufaktur – Creative Cooking during workshops and tastings and maybe even discover a new passion in addition to exceptional taste experiences.



In the Restaurant Esszimmer – German Dishes as well as enjoying delicacies from home, you can enjoy heavenly views.

Our exclusive restaurants:

Cucimare – Italian Manufactory	● 贵 贵
Esszimmer – German Dishes	● 贵 2
Hanami – Asian Cuisine by Tim Raue	● 贵 4 贵 6
La Spezia – Italian Eatery	● 贵 4 贵
Schmankerl – Austrian Eatery	● 贵 6
Surf & Turf – Steakhouse	● 贵 2 贵 4 贵 6 贵 8
Surf & Turf – BBQ Tables	● 贵 4 贵 6
Hideki – Asian Delicacies	● 贵

● Table service ● Outside area

The best reason to raise a toast: Every reason.



The perfect companion for every drink: Sea view and a gentle breeze.

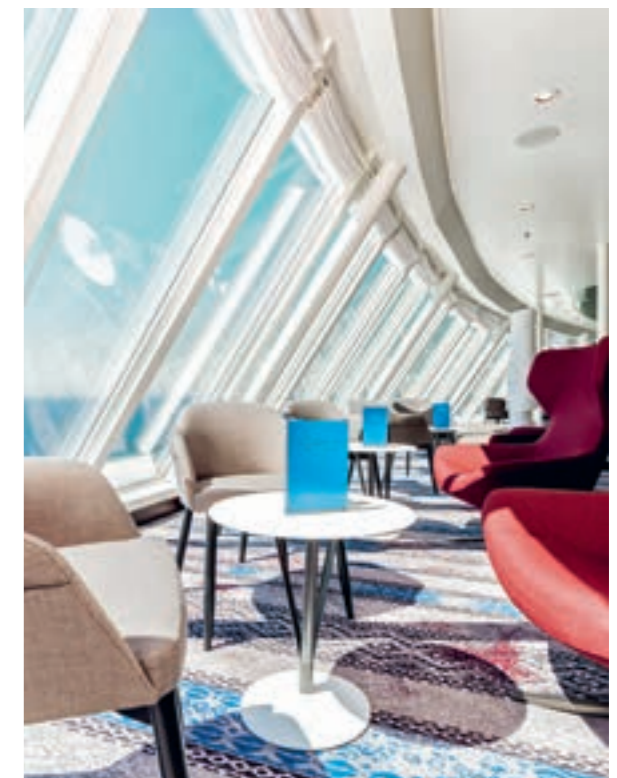
Thirst quencher, stimulant, aperitif, nightcap, morning ritual or snooze drink – a drink can be so many things. And that’s why we have so many premium drinks in our range. Inclusive, naturally. Start the day in relaxed style with a freshly brewed, fair trade coffee or tea; refresh yourself in

between with a soft drink or a cool beer and enjoy the sunset with a sundowner, specially shaken for you under the open sky. Whatever occasion you would like to raise a toast to: In our various bars and lounges you will find, alongside a perfect backdrop, the perfect selection of drinks.

Our inclusive bars and lounges:

Abtanz Bar – Discotheque	• 1 2 3 4 5 6 7
Außenalster – Bar & Grill	• 1 2 3 4 5 6 7
Casino	• 1
Casino & Lounge	• 1 2 3 4 5 6 7
Gallery Bar	• 1 2 3 4 5 6 7
Grööne Bar	• 1
Himmel & Meer Lounge	• 1 2 3 4 5 6 7
Hoheluft Bar	• 1 2 3 4 5 6 7
Rauchersalon – Smokers Lounge	• 1
Ruhepol – Bar & Lounge	• 1 2 3 4 5 6 7
Schau Bar	• 1 2 3 4 5 6 7
Studio Bar	• 1 2 3 4 5 6 7
TUI Bar	• 1 2 3 4 5 6 7
Überschau Bar	• 1 2 3 4 5 6 7
Unverzicht Bar	• 1 2 3 4 5 6 7
Waterkant – Bar & Lounge	• 1
X-Bar (only for Suites and Junior Suites)	• 1 2 3 4 5 6 7
X-Lounge (only for Suites and Junior Suites)	• 1 2 3 4 5 6 7

• Table service • Outside area



Our many different bars and lounges guarantee you the perfect backdrop for every drink and every time of day.

Made for special moments.



The light-flooded diamond-shaped glass facade at the stern offers a unique atmosphere for special moments.

Would you like to crown your holiday with a very special time-out? Then we would be happy to welcome you in our exclusive bars and lounges, where we would be delighted to prepare the perfect drink to match your special occasion, for a surcharge. How about an exceptional coffee specialty in one of our cafés or

a vitamin-rich energy dispenser in our Saftwerft – Juice Bar? In our Ebbe & Flut – Beer Bar you can enjoy craft-brewed beer. With its noble ambience and the fantastic view, our Champagner Treff is perfect for ending an eventful day with selected champagnes.



In our exclusive bars and lounges we serve you the perfect companion for your special moments.

Our exclusive bars and lounges:

Café Bar	•	🍷
Café Central	•	🍷
Café Lounge	•	🍷🍷
Champagner Treff	•●	🍷🍷🍷🍷
Diamant Bar	•	🍷🍷🍷🍷🍷
Ebbe & Flut – Beer Bar	•	🍷🍷
Nasch Bar	•	🍷
Saftwerft – Juice Bar		🍷🍷 🍷 🍷

● Table service ● Outside area



A photograph of two women practicing yoga in a bright, modern room with large windows overlooking the ocean. The woman in the foreground is in a seated yoga pose, wearing a light blue long-sleeved top and dark shorts. The woman in the background is also in a seated yoga pose, wearing a light grey long-sleeved top and dark leggings. The room has a wooden floor and large windows that let in bright sunlight, creating a serene atmosphere.

The loveliest discovery: Your own sense of well-being.

On board our *Mein Schiff*® fleet there's always time for a timeout:
Relax with a pampering treatment in the SPA area, swim your
laps in the pool or use the various fitness options in our gym –
and gain not only inspiring impressions but also new strength
and fresh momentum.

On the feel-good route to renewed energy.



Relax in the whirlpool: Only one of the numerous ways to chill out on board.



Do your training session accompanied by a fabulous sea view in our spacious gym.



First full power, then a vitamin kick. The *Mein Schiff*® fleet turns fitness into a gourmet highlight.



Leave the stresses of everyday life a little further behind you with every nautical mile and concentrate on your own sense of well-being. Whether you want to improve your fitness or just relax without limits – all options are open to you on board. In the spacious outdoor areas, for example, the outdoor pool, which is 25 metres long, and the running track whet

your appetite for training under the open skies. A wide range of sports courses and a visit to the gym are also inclusive services for you, as is access to the sauna area of our SPA & Meer area: In our multi-award-winning feel-good zone, the large selection of different types of sauna guarantees perfect relaxation attuned to your individual requirements. For a

surcharge you can enjoy being pampered during a massage or cosmetic treatment: Our experts look forward to seeing you.

Always on offer: Exceptional experiences.

When the curtain rises on board our ships, you can look forward to top-class entertainment. Whether it's rousing shows and musicals, inspiring variety art or performances by renowned singers, comedians or actors: With us you will be well entertained on all the oceans of the world.



Raise the curtain for great variety.

We invite you to be amazed: Our high-class artists are looking forward to impressing you.



Our live shows are the perfect end to every day of your holiday.



In the Klanghaus - Concert Hall on *Mein Schiff 3* and *Mein Schiff 4* you can experience chamber music at sea in a new dimension.

The best entertainment for all the senses awaits you in our theatres when we announce: It's showtime.



Rock shows, musicals or classical concerts: in our theatres you can look forward to international artists of all genres.



Irresistible and simply timeless: Our variété shows guarantee great artistry.

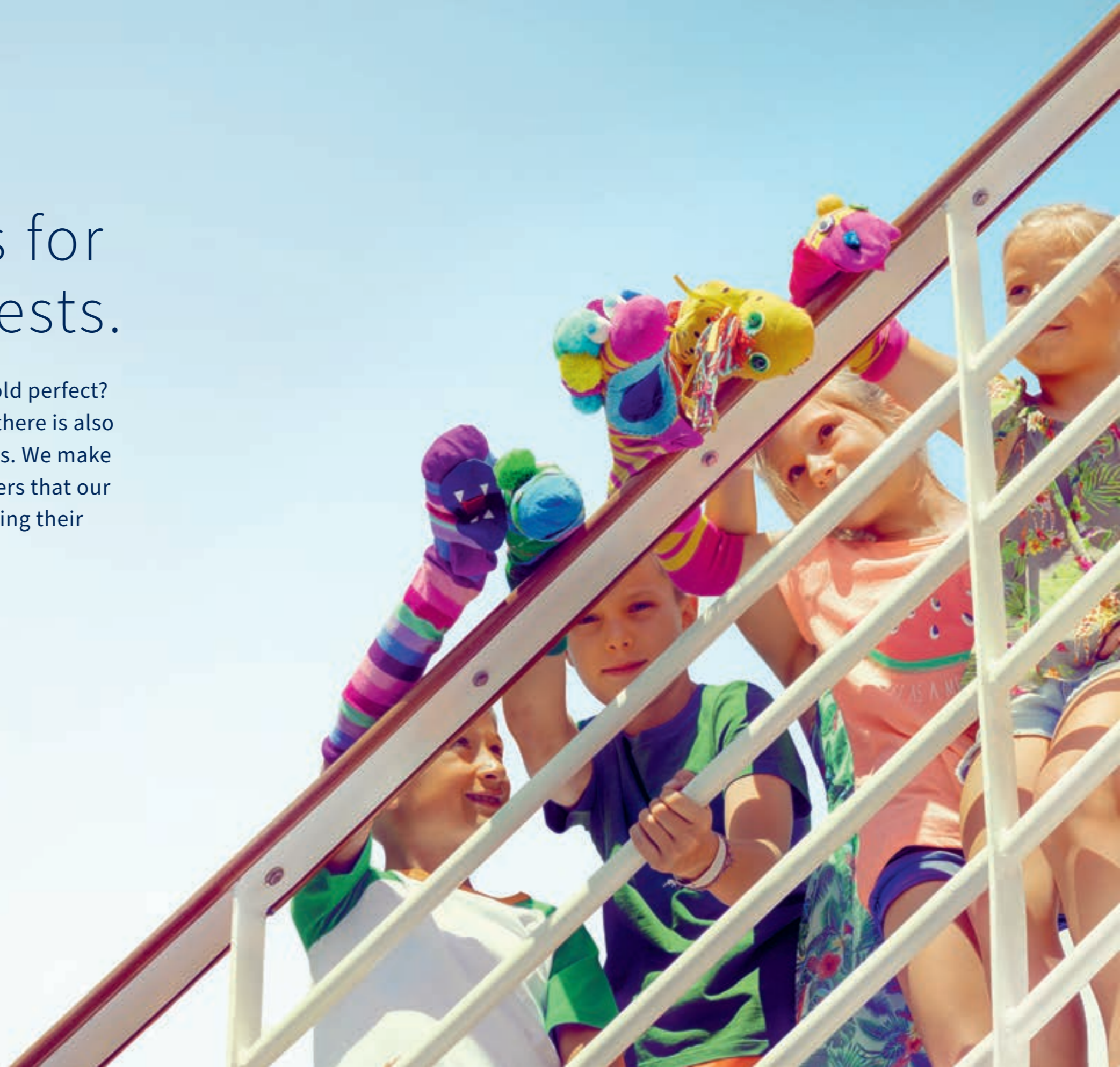
Memories that stay with you, and plenty of time to laugh, dream and marvel: Thanks to our top-class entertainment with daily changing programme items, this is guaranteed on your trip. Whether rock or pop, variété or magic, musicals or comedy: In the theatre or on our various smaller stages on board, the curtain rises for international guest stars and renowned artists, who will inspire you with their skill.

You can also enjoy classical music in new dimensions on the world's oceans during a visit to the Klanghaus on *Mein Schiff 3* and *Mein Schiff 4*: The two concert halls are revolutionising international cruise entertainment as the first chamber music philharmonic on the high seas. The studio of *Mein Schiff 5* is setting new standards as the world's first holography stage in the cruising industry. You would like to

use your voyage on our *Mein Schiff®* fleet to widen your knowledge horizons? Our lecturers are looking forward to sharing their experience, knowledge and very personal experiences around your holiday region with you.

Big adventures for small cruise guests.

What makes a joint holiday for young and old perfect? When, in addition to a lot of time together, there is also plenty of space to pursue your own interests. We make families happy – with a diverse range of offers that our young cruise guests will really enjoy, letting their parents relax completely.





New friends, great offers and lots of their favourite ice-cream make kids' eyes light up.

Our free child and teenager care services create the best conditions for a relaxed family holiday. Our youngest cruise guests and their parents will find plenty of space to cuddle and play in our Nest – Baby Room. At the Kids Club Insel der Seeräuber, children from the age of 3 go on exciting discovery trips. Teenagers from the age of 12 onwards can look forward to a varied programme during the German school holidays in the Sturmfrei - Teens Lounge as well as sports and gaming events.

In addition to our exciting theme days and numerous family activities, we offer a wide range of workshops for all age groups, in which we respond to the individual needs of kids and teens. For activities at the destination that inspire the whole family, our shore excursion department also likes to order special shore excursions from local organisers which are especially suitable for young and young-at-heart together.

Anything but boring. Our offer for children.

The colourful programme of events in the Kids Club turns every day into a holiday.



The teens among our cruise guests can also look forward to plenty of action-packed events.



Travel with a good conscience.

The well-being of nature and the environment is very close to our hearts. That's why we are constantly working to achieve our sustainability goals and also to remain one of the most environmentally friendly cruise fleets in the future – so you can enjoy every moment of your voyage with a good conscience.

Fully dedicated to caring for the environment.

We love our world in all its diversity. That is why it is a matter of course for us to do our utmost to make our contribution to a cruise that is as environmentally friendly as possible. With the greatest commitment and innovative technology, we are constantly working to achieve this goal as well.



Wherever possible, our ships draw upon onshore electricity – an important contribution to reducing emissions.

Wasteless – the success programme in combatting plastic waste.

To enable a plastic-free holiday on the *Mein Schiff*® fleet and thus make an important contribution to environmental protection – with this vision, we introduced our wasteless plastic reduction programme on our ships in 2018. Since then, single-use plastic items have been largely avoided or replaced by alternatives made from renewable and sustainable raw materials. And our track record is impressive, because even “supposedly small measures have a big effect across the entire fleet”, according to Lucienne Damm, Head of Sustainability at TUI Cruises.



Our measures to reduce emissions

- ✓ Our very young *Mein Schiff*® fleet is one of the most environmentally and climate friendly fleets in the world. The entire fleet is characterised by a special energy efficiency.
- ✓ We are one of the first cruise lines to commit to achieving absolute emission reduction targets. We have had these goals scientifically verified by the SBTi initiative, supported by organisations such as the WWF and the UN Global Compact.
- ✓ The entire fleet has combined exhaust gas purification systems, which are in operation around the clock. In this way, emissions can be reduced by up to 99 per cent.
- ✓ Our *Mein Schiff 1*, *Mein Schiff 4* and *Mein Schiff 6* have a landside power connection. As early as the end of 2023 *Mein Schiff 5* will follow, and *Mein Schiff 2* in early 2024 and in summer 2024 the new *Mein Schiff 7*.
- ✓ We travel at the lowest possible speed as much as possible, thereby reducing our fuel consumption and emissions.
- ✓ *Mein Schiff 7* does not use heavy fuel oil and is instead operated with lower-emission marine diesel.
- ✓ In 2024 und 2026, two further newbuilds will follow, that can be operated with any kind of gaseous fuel. Our aim in the future is to use the highest possible proportion of organic LNG.

An overview of further measures.



Energy Efficiency

We reduce fuel consumption and emissions throughout our fleet by saving energy.



Waste management

When dealing with waste, the same guiding principle applies to us on board as on land: Avoid, reduce, recycle.



Wastewater treatment

For clean seas, only purified wastewater goes overboard.



Environmental protection is a matter close to our hearts

On each of our ships, an environmental officer ensures that the environmental standards and corporate guidelines are implemented by the country on board.



Shore excursions

When designing our shore excursions, we make sure that they are particularly environmentally conscious and sustainable.



Range of food and drink

When selecting products, we pay attention to sustainable aspects, e.g. by indicating vegetarian and vegan options. We also have a selection of organically produced and fair trade products in our range.

Plastic-free cruising

With WASTELESS – the plastic reduction programme from *Mein Schiff*®



Slurping without plastic

Use of glass straws instead of plastic.



Sustainable cuisine

Use of cotton aprons instead of plastic single-use aprons in our kitchens on board.



Avoidance of plastic and paper bags

Use of official *Mein Schiff*® carrier bags from recycled PET in our shops.



Plastic-free drinks

General avoidance of drink stirrers and drink skewers made of plastic. Use of alternative products made of wood.



Personal care without microplastics

Programme of microplastic-free care products in all cabins by dispenser systems and thus avoidance of disposable packaging.



Butter without single-use packaging

Use of automated butter dispensers instead

Tariffs for every travel plan.

Our high-quality and comprehensive *Mein Schiff*® Premium inclusive benefits are included in every tariff. The first choice with absolute feel-good guarantee is called PRO tariff. It can be booked at any time and is just the right thing for guests who prefer to leave nothing to chance when choosing the cabin, would like to make many shore excursions and want to be easily accessible by mobile during their holiday. For even more comfort

and exclusivity, you can guarantee further attractive benefits with the VIP tariff option 1 or VIP tariff option 2.

According to availability, two further tariffs will be offered: The PLUS tariff and the PUR tariff. The prices can change from day to day and are not available for all routes. You can receive information that is updated daily from your travel agency or on www.meinschiff.com.

	VIP-PRO	PRO	PLUS	PUR
	Unbeatable combination: PRO-tariff with VIP tariff option 1 or 2		Our most popular tariff	
Exclusive VIP benefits	✓	✓		
Early bird discount	✓			
Option booking	Can be reserved for 3 days free of charge	Can be reserved for 3 days free of charge		
Date change possible	Rebookable once	One date rebooking		
Rebooking	0 €	0 €	150 €	
Shore excursions	20% advantage plus advance reservation	20% benefit	10% benefit	
Internet on board	Upgrade to 3 GB / 7 GB	350 MB	100 MB	
Travel by air	Rail&Fly ticket no extra charge	Rail&Fly ticket no extra charge	Rail&Fly ticket no extra charge	
Deposit	25%	25%	30%	35%
Cabin	All categories, location and / or desired cabin can be freely selected	All categories, position and / or desired cabin can be freely selected	Inside, Outside, Balcony or Balcony Cabin Plus	Inside, Outside, Balcony Cabin
Contained in all tariffs: Mein Schiff® Premium inclusive benefits				
	Strictly limited	Bookable at any time	Subject to availability	Subject to availability

Your options for even more benefits.

If you book VIP tariff option 1 or 2, you have the chance to enjoy strictly limited benefits. This allows you, for example, to reserve your desired excursions ahead of time. And you can come to us on board in peace and quiet even before the official check-in.

You can find all benefits of the VIP tariff options 1 and 2 in the table below. The VIP tariff option 1 is available from only 200 € and the VIP tariff option 2 from only 120 €.

VIP tariff option 1

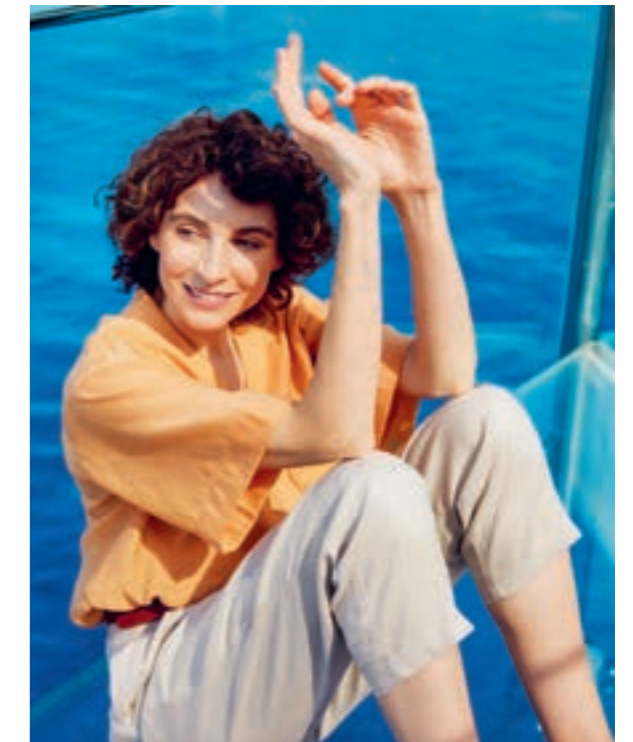
- ✓ Separate check-in in the harbour terminal
- ✓ Early check-in on board
- ✓ Late check-out – stay longer on board on your departure day
- ✓ Early reservation of shore excursions
- ✓ Internet upgrade 7 GB data volume
- ✓ Ironing service
- ✓ Laundry service
- ✓ Comfort pillows
- ✓ Exclusive breakfast in the Große Freiheit

VIP tariff option 2

- ✓ Separate check-in in the harbour terminal
- ✓ Early check-in on board
- ✓ Late check-out – stay longer on board on your departure day
- ✓ Early reservation of shore excursions
- ✓ Internet upgrade 3 GB data volume



The *Mein Schiff*® fleet at a glance.



<i>Mein Schiff</i>							
Commissioning	2018	2019	2014	2015	2016	2017	2024
Passenger capacity	2,894	2,894	2,506	2,506	2,534	2,534	2,896
Restaurants & bistros	12	12	9	9	11	11	12
Bars & lounges	17	17	15	15	16	16	17
Outdoor pool	25 m	25 m	25 m	25 m	25 m	25 m	25 m
Indoor pool	-	-	•	•	-	-	•
Lagune	•	•	-	-	•	•	-
Outer decks	ca. 20,500 m ²	ca. 20,500 m ²	ca. 17,795 m ²	ca. 17,795 m ²	ca. 17,895 m ²	ca. 17,895 m ²	ca. 20,500 m ²
Sport & Fitness area	ca. 2,400 m ²	ca. 2,400 m ²	ca. 1,700 m ²	ca. 1,700 m ²	ca. 1,800 m ²	ca. 1,800 m ²	ca. 2,400 m ²
Jogging track	ca. 440 m 6.7° gradient	ca. 440 m 6.7° gradient	ca. 280 m	ca. 280 m	ca. 280 m	ca. 280 m	ca. 440 m 6.7° gradient



Like at home. Just very far away.

Whether you travel to far-flung regions or nearby coasts – during your time with the *Mein Schiff*® fleet, you will feel at home during every moment, because our cabins and suites, with their spacious and modern design, are true comfort zones. Divine views inclusive.

Live more beautifully with a sea view.

The cabins of the *Mein Schiff*® fleet.

When entering the cabin, you will not only be impressed by the bright design but also by the cosy atmosphere with plenty of space for all your belongings. Not to forget: The love for nature with microplastic-free care products in environmentally friendly soap and shampoo dispensers. The perfect feel-good ambience is also provided by the cabin service twice a day by our friendly staff. From the modern furnished, comfortable inside cabins to spacious outside cabins or balcony cabins with private balcony or own veranda – on board the *Mein Schiff*® fleet you will find exactly the home that matches

your desires and your requirements. It doesn't matter if you travel alone, with a companion or the whole family. Guests with restricted mobility have the choice of several wheelchair-accessible cabins. Have a look around: On www.meinschiff.com/kabinen you will find 360° panorama views in all cabins and suites of the *Mein Schiff*® fleet.

General furnishing in the cabins:

- 2 beds (can sometimes be separated or joined together)
- For additional guests: Sofa beds, double sofa beds, pullman beds (fold-out upper beds) or bunk beds
- Espresso machine
- Bathrobes and slippers
- TV
- WiFi reception in all cabins and suites
- Hair dryer

Sustainable cabins and suites:

- Use of LEDs und energy-saving bulbs
- Use of FSC-certified wood from sustainable economy for the interior furnishings
- Cabin carpets with high percentage of wool (renewable resources) and very high recycling ability
- Use of GOTS*-certified organic cotton for bedding, towels and bathrobes

Our wheelchair-accessible cabins:

For our guests with restricted mobility, we have available on *Mein Schiff 1* to *Mein Schiff 7* wheelchair-accessible inside, outside and balcony cabins as well as junior suites (only *Mein Schiff 1*, *Mein Schiff 2*, *Mein Schiff 6* and *Mein Schiff 7*).

They are characterised by more space, wide entrance and bathroom doors, as well as special hand rails and an emergency phone. These cabins are always close to the elevators. We would be happy to check the accommodation in one of our wheelchair-accessible cabins for you.



Our cabin furnishings at a glance

	Maximum occupancy	m ² living space	m ² balcony or veranda	Espresso machine	Hammock	Sun Lounger	Separate living area	Number of wheelchair-accessible cabins	Game console	Deck
Mein Schiff 1, Mein Schiff 2 and Mein Schiff 7										
Inside Cabin	4	17		●				2		3, 6–11
Outside Cabin	4	17		●				4		3, 4, 8
Balcony Cabin	4	17	5–7	●				4		6–11, 14
Premium Veranda Cabin	3	17	30	●	●	2				11
SPA Balcony Cabin	3	17	5	●						11
Single Cabin Inside (only <i>Mein Schiff 7</i>)	1	8								4
Single Cabin Outside (only <i>Mein Schiff 7</i>)	1	8								4
Family Cabin Outside	6	29–44		●					●	7–9
Family Cabin Balcony	5	25	15	●		1			●	6
Mein Schiff 3 to Mein Schiff 6										
Inside Cabin	4	17		●				2		3, 6–11
Outside Cabin	4	17		●				4		3, 8
Balcony Cabin	4	17	5–7	●				4		6–11
Combi Balcony Cabin	4	17	9	●						7
Premium Veranda Cabin	3	17	30	●	●	2				7–11
SPA Balcony Cabin	4	17	5	●						11
Family Cabin Outside	6	29–44		●					●	7–9
Family Cabin Balcony	5	25	15	●		1			●	6
Family Cabin Veranda Deluxe (only <i>Mein Schiff 3</i>)	6	42	47	●	●	2	●		●	6

*The Global Organic Textile Standard (GOTS) is the world's leading standard for the processing of textiles made from natural fibres. The entire production chain is recorded, controlled and certified according to strict ecological and social criteria, from the extraction of raw materials to the marking of the finished items.

Havens of well-being for all those who are looking for something special.

The Suites and Junior Suites of the *Mein Schiff*® fleet.

For a cruise with maximum free space: Discover the luxuriously furnished Suites and Junior Suites of the *Mein Schiff*® fleet.

Enjoy the highest level of comfort in a first-class ambience, for example in our elegant Diamant Suite, the Themen Suite with its exceptional

design elements or the Panorama Suite with up to 77 m² of living space, a veranda spanning over 30 m² and an absolutely priceless view. Whichever suite you choose – our numerous extras crown your stay on board and make it an even more extraordinary experience.

Extra services for our guests of the Suites and Junior Suites

- Separate check-in
- Free drinks in your minibar
- Free internet access
- Exclusive access to the X-Lounge on deck 14
 - Champagne and selection of high-quality spirits and feel-good drinks*
 - Light warm and cold snacks as well as fresh fruit (from 07:00 to 18:30)
 - A selection of daily newspapers in the X-Lounge
- Exclusive access the separate X-Panorama Deck on deck 6 (*Mein Schiff 1* and *Mein Schiff 2*), X- Bar on deck 15 (*Mein Schiff 1*, *Mein Schiff 2* and *Mein Schiff 7*) and X-Sun Deck on deck 16 (*Mein Schiff 1*, *Mein Schiff 2* and *Mein Schiff 7*) and deck 15 (*Mein Schiff 3* to *Mein Schiff 6*)
- Excellence service from our concierge
 - table reservations in the specialty restaurants
 - individual support in booking the shore excursions organised by TUI Cruises
 - organisation of appointments such as the hairdresser
 - arrangements for personal celebrations such as birthdays
- Game console
- Selection of daily newspapers for guests of the suites



The advantages of our Suites and Junior Suites at a glance.

	Maximum occupancy	m ² living space	m ² balcony or veranda	Espresso machine	Hammock	Sun Lounger	Access to the X-Lounge	Access to separate sun deck	Separate living area	Number of wheelchair accessible cabins	Free newspaper service	Free internet access	Game console	Deck
Mein Schiff 1, Mein Schiff 2 and Mein Schiff 7														
Junior Suite	4	26	7	●			●	●		2	●	●	●	10, 11
Schöne Aussicht Suite	4	39	13–14	●	●	2	●	●			●	●	●	9, 10
Horizont Suite	4	39–40	16	●	●	2	●	●	●		●	●	●	7, 8
Übersee Suite	4	40	9	●	●	1	●	●			●	●	●	14
Himmel & Meer Suite	4	42	29	●	●	2	●	●			●	●	●	15
Panorama Suite	6	73–77	31–36	●	●	2	●	●	●		●	●	●	6, 9, 10
Mein Schiff 3 to Mein Schiff 6														
Junior Suite Balcony	4	26	8	●			●	●		2*		●	●	10
Himmel & Meer Suite	4	40	29	●	●	2	●	●	●**		●	●	●	14
Themen Suite	4	54	15	●	●	1	●	●	●		●	●	●	10
Diamant Suite (<i>Mein Schiff 4</i> to <i>Mein Schiff 6</i>)	6	42	47	●	●	2	●	●	●		●	●	●	6

*Please note that the drinks service in the X-Lounge incurs a surcharge from 19:00.

Details of cabins are subject to change. Colour and furnishings may vary within a cabin category and between ships. | Please note: If you would like a baby cot (limited number) in your cabin, we kindly ask you to request this in advance, as it is not possible to set it up in all cabins. | *Only *Mein Schiff 6*. | **Except *Mein Schiff 6*.

Cabins

Mein Schiff 1

Mein Schiff 2

Inside Cabin 贵贵

- Living space: 17 m² (max. 4 persons: 2 beds and up to 1 sofa bed or double sofa bed or 1 pullman bed)*
- The beds can be arranged together or separated, as desired.
- Wheelchair-accessible cabins available (3018 and 3021)



Room example *Mein Schiff 1*



Floor plan example *Mein Schiff 1*

Outside Cabin 贵贵

- Living space: 17 m² (max. 4 persons: 2 beds and up to 1 sofa bed or double sofa bed)*
- The beds can be arranged together or separated, as desired.
- Wheelchair-accessible cabins available (3000, 3002, 3003, 3005)



Room example *Mein Schiff 1*



Floor plan example *Mein Schiff 1*

*The positioning of the beds can vary.

Balcony Cabin 贵贵

- Living space: 17 m² (max. 4 persons: 2 beds and 1 sofa bed or 1 double sofa bed)*
- Balcony size: 5–7 m² (1 table und 2 chairs)
- The beds can be arranged together or separated, as desired.
- Wheelchair-accessible cabins available (9039, 9041, 9043, 9045)



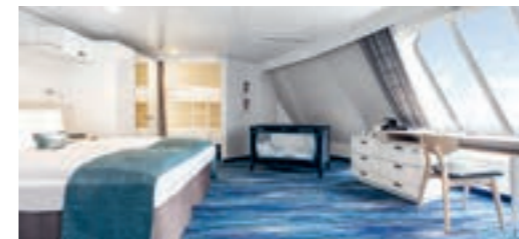
Room example *Mein Schiff 1*



Floor plan example *Mein Schiff 1*

Family Cabin Outside 贵贵

- Living space: 29–44 m² (at least 3 up to max. 6 persons: 2 beds, 1 sofa bed and 1 bunk bed or 2 beds and 1 double sofa bed)*
- The beds can be arranged together or separated, as desired.
- Curtains as room separation between living and sleeping areas
- Game console



Room example *Mein Schiff 1*



Floor plan example *Mein Schiff 1*

*The positioning of the beds can vary.

Family Cabin Balcony 贵贵

- Living space: 25 m² (at least 3 up to max. 5 persons: 2 beds, 1 double sofa bed and 1 pullman bed)*
- Balcony size: 15 m² (1 table, 4 chairs und 1 lounger)
- The beds can be arranged together or separated, as desired.
- Curtains as room separation between living and sleeping areas
- Game console



Room example *Mein Schiff 2*



Floor plan example *Mein Schiff 2*

SPA Balcony Cabin 貴貴

- Living space: 17 m² (max. 3 persons: 2 beds and up to 1 sofa bed)*
- Balcony size: 5 m² (1 table and 2 chairs)
- The beds can be arranged together or separated, as desired.

For voyages of less than 5 nights, some services from the feel-good package can only be offered in a different form.



Room example *Mein Schiff 1*



Floor plan example *Mein Schiff 1*

Special features if booking the SPA Balcony Cabin:

- Special SPA care products
- 1 beach bag and 1 keychain per person
- Selected towels, bedding and bathrobe

Your inclusive feel-good package:

- One soothing body treatment per adult in our SPA & Meer area
- Personal consultation, one individual coaching and health check per adult with our experts from the Sport & Health department
- Further offers exclusively for SPA Balcony Cabin guests

Premium Veranda Cabin 貴貴

- Living space: 17 m² (max. 3 persons: 2 beds and up to 1 sofa bed)*
- Veranda size: 30 m² (1 table, 2 chairs, 2 loungers and 1 hammock)
- The beds can be arranged together or separated, as desired.



Room example *Mein Schiff 2*



Floor plan example *Mein Schiff 2*

*The positioning of the beds can vary.

Suites and Junior Suites

Mein Schiff 1

Mein Schiff 2

Junior Suite Balcony 貴貴

- Living space: 26 m² (max. 4 persons: 2 beds and 1 double sofa bed)
- Balcony size: 7 m² (1 table and 2 chairs with footrest)
- The beds can be arranged together or separated, as desired.
- Wheelchair-accessible cabins available (10020, 10025)



Room example *Mein Schiff 1*



Floor plan example *Mein Schiff 1*

Schöne Aussicht Suite 貴貴

- Living space: 39 m² (max. 4 persons: 2 beds and 1 double sofa bed)
- Balcony size: 13–14 m² (1 table, 2 chairs, 2 loungers, 1 hammock with side table)
- The beds can be arranged together or separated, as desired.



Room example *Mein Schiff 1*



Floor plan example *Mein Schiff 1*

Details of cabins are subject to change. Colour and furnishings may vary within a cabin category and between ships. | Please note: If you would like a baby cot (limited number) in your cabin, we kindly ask you to request this in advance, as it is not possible to set it up in all cabins.

Übersee Suite 贵宾

- Living space: 40 m² (max. 4 persons: 2 beds and 1 double sofa bed)
- Balcony size: 9 m² (1 table, 2 chairs, 1 lounger, 1 hammock)
- The beds can be arranged together or separated, as desired.



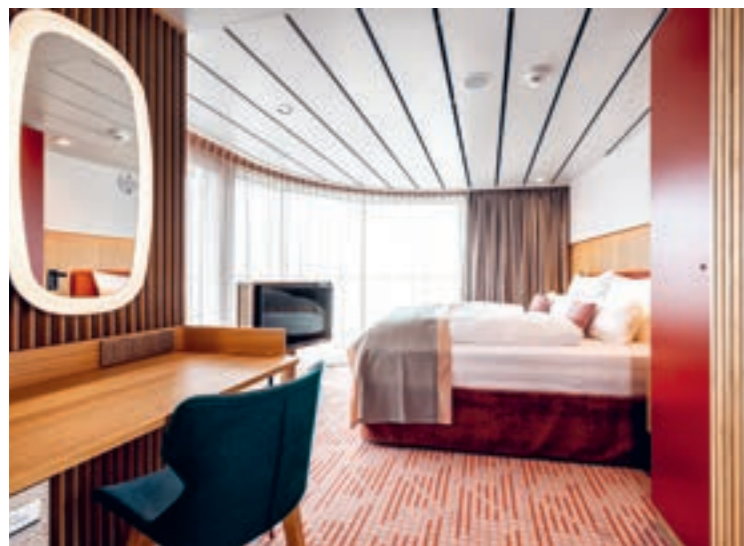
Room example *Mein Schiff 1*



Floor plan example *Mein Schiff 1*

Horizont Suite 贵宾

- Living space: 39–40 m² (max. 4 persons: 2 beds and 1 double sofa bed)*
- Balcony size: 16 m² (1 table, 2 chairs, 2 loungers, 1 hammock)
- The beds can be arranged together or separated, as desired.
- Separate living and sleeping areas with couch corner



Room example *Mein Schiff 2*



Floor plan example *Mein Schiff 2* (outside position)

*The positioning of the beds can vary.

Himmel & Meer Suite 贵宾

- Living space: 42 m² (max. 4 persons: 2 beds and 1 double sofa bed)
- Veranda size: 29 m² (1 table, 4 chairs, 2 loungers, 1 hammock, 1 wicker chair, deck terrace has partial sun protection)
- The beds can be arranged together or separated, as desired.
- Open plan living and sleeping area



Room example *Mein Schiff 1*



Floor plan example *Mein Schiff 1* (deck terrace)



Floor plan example *Mein Schiff 1* (living area)

Panorama Suite 贵宾

- Living space: ca. 73–77 m² (max. 6 persons: 2 beds and 1 double sofa bed, plus bedroom with double bed)*
- Veranda size: ca. 31–36 m² (1 table with 2 chairs, 2 loungers with side table, 1 hammock)
- The beds can be arranged together or separated, as desired.
- Bathroom with double shower, additional bathroom with toilet, shower and washbasin
- Separate living and sleeping areas with couch corner
- Steam fire as a special highlight



Room example *Mein Schiff 1*



Floor plan example *Mein Schiff 1*

*The positioning of the beds can vary.

Cabins

Mein Schiff 3 to Mein Schiff 6

Inside Cabin 🚪🚪🚪🚪

- Living space: 17 m² (max. 4 persons: 2 beds and up to 1 sofa bed or 1 double sofa bed or 1 pullman bed)*
- The beds can be arranged together or separated, as desired.
- Wheelchair-accessible cabins available (3006, 3015)



Room example **Mein Schiff 4**



Floor plan example **Mein Schiff 4**

Outside Cabin 🚪🚪🚪🚪

- Living space: 17 m² (max. 4 persons: 2 beds and 1 sofa bed or 1 double sofa bed)*
- The beds can be arranged together or separated, as desired.
- Wheelchair-accessible cabins available (3097, 3099, 3101, 3103)



Room example **Mein Schiff 6**



Floor plan example **Mein Schiff 6**

*The positioning of the beds can vary.

Balcony Cabin 🚪🚪🚪🚪

- Living space: 17 m² (max. 4 persons: 2 beds and 1 sofa bed or 1 double sofa bed)*
- Balcony size: 5–7 m² (1 table und 2 chairs)
- The beds can be arranged together or separated, as desired.
- Wheelchair-accessible cabins available (9039, 9041, 9043, 9045)



Room example **Mein Schiff 3**



Floor plan example **Mein Schiff 5**

Family Cabin Outside 🚪🚪🚪🚪

- Living space: 29–44 m² (at least 3 up to max. 6 persons: 2 beds, 1 double sofa bed and 1 bunk bed or 2 beds and 1 double sofa bed)*
- The beds can be arranged together or separated, as desired.
- Curtains as room separation between living and sleeping areas
- Game console



Room example **Mein Schiff 5**



Floor plan example **Mein Schiff 5**

*The positioning of the beds can vary.

Combi Balcony Cabin

- Living space: 17 m² (max. 4 persons: 2 beds, 1 sofa bed or 1 double sofa bed)*
- Balcony size: 9 m² (1 table, 4 chairs, 1 lounge with side table)
- The beds can be arranged together or separated, as desired.



Room example *Mein Schiff 3*



Floor plan example *Mein Schiff 3*

Special features if booking the Combi Balcony Cabin:

- Up to 3 balcony cabins whose balconies can be combined to a maximum size of 27m²
- Particularly suitable if you are travelling with friends or a large family group. Experience your voyage with holiday house character and enjoy evenings on your own balcony, privately with friends or family.

SPA Balcony Cabin

- Living space: 17 m² (max. 4 persons: 2 beds, 1 sofa bed or 1 double sofa bed)*
- Balcony size: 5 m² (1 table und 2 chairs)
- The beds can be arranged together or separated, as desired.
- For voyages of less than 5 nights, some services from the feel-good package can only be offered in a different form.



Room example *Mein Schiff 5*



Floor plan example *Mein Schiff 5*

Special features if booking the SPA Balcony Cabin:

- Special SPA care products
- 1 beach bag and 1 keychain per person
- Selected towels, bedding and bathrobe

Your inclusive feel-good package:

- One soothing body treatment per adult in our SPA & Meer area
- Personal consultation, one individual coaching and health check per adult with our experts from the Sport & Health section
- Further offers exclusively for SPA Balcony Cabin guests

*The positioning of the beds can vary. | Details of cabins are subject to change. Colour and furnishings may vary within a cabin category and between ships. Please note: if you would like a baby cot (limited number) in your cabin, we kindly ask you to request this in advance, as it is not possible to set it up in all cabins.

Family Cabin Balcony

- Living space: 25 m² (at least 3 up to max. 5 persons: 2 beds, 1 double sofa bed and 1 pullman bed)*
- Balcony size: 15 m² (1 table, 4 chairs und 1 lounge)
- The beds can be arranged together or separated, as desired.
- Curtains as room separation between living and sleeping areas
- Game console



Room example *Mein Schiff 5*



Floor plan example *Mein Schiff 5*

Premium Veranda Cabin

- Living space: 17 m² (max. 3 persons: 2 beds and 1 sofa bed)*
- Veranda size: 30 m² (1 table, 2 chairs, 2 loungers and 1 hammock)
- The beds can be arranged together or separated, as desired.



Room example *Mein Schiff 3*



Floor plan example *Mein Schiff 3*

Family Cabin Veranda Deluxe

- Living space: 42 m² (at least 3 up to max. 6 persons: 2 beds, 1 bunk bed and 1 double sofa bed)*
- Veranda size: 47 m² (1 table, 4 chairs, 2 loungers, 1 hammock)
- The beds can be arranged together or separated, as desired.
- Sliding doors between living and sleeping areas
- Game console



Room example *Mein Schiff 3*



Floor plan example *Mein Schiff 3*

*The positioning of the beds can vary.

Suites and Junior Suites

Mein Schiff 3 to *Mein Schiff 6*

Junior Suite Balcony 🏠🏠🏠🏠

- Living space: 26 m² (max. 4 persons: 2 beds and 1 double sofa bed)
- Balcony size: 8 m² (1 table and 2 chairs with footrest)
- The beds can be arranged together or separated, as desired.
- Wheelchair-accessible cabins only available on *Mein Schiff 6*. (10020, 10023)*



Only available on
Mein Schiff 6



Room example *Mein Schiff 3* (sleeping area)



Room example *Mein Schiff 3* (living area)



Floor plan example *Mein Schiff 3*

*You can find variations in the floor plan at www.tuicruises.com/kabinen

Himmel & Meer Suite 🏠🏠🏠🏠

- Living space: 40 m² (max. 4 persons: 2 beds and 1 double sofa bed)
- Veranda size: 29 m² (1 table, 4 chairs, 2 loungers, 1 hammock, some deck terrace has partial sun protection)
- The beds can be arranged together or separated, as desired.
- Optically separate living area with couch corner (only on *Mein Schiff 3* to *Mein Schiff 5*)
- Open plan living and sleeping area (only on *Mein Schiff 6*)



Room example *Mein Schiff 3*



Sample floor plan *Mein Schiff 3* and *Mein Schiff 4*



Room example *Mein Schiff 5* (deck terrace)



Floor plan example *Mein Schiff 5*



Room example *Mein Schiff 6*



Floor plan example *Mein Schiff 6*

You can discover further suite categories in the table on page 51 and at www.meinschiff.com/kabinen Or simply scan the QR code.



Details of cabins are subject to change. Colour and furnishings may vary within a cabin category and between ships. | Please note: If you would like a baby cot (limited number) in your cabin, we kindly ask you to request this in advance, as it is not possible to set it up in all cabins.

Cabins

Mein Schiff 7

Inside Cabin

- Living space: 17 m² (max. 4 persons: 2 beds and up to 1 sofa bed or double sofa bed or 1 pullman bed)*
- The beds can be arranged together or separated, as desired.
- Wheelchair-accessible cabins available (3018 and 3021)



Room example *Mein Schiff 7*



Floor plan example *Mein Schiff 7*

Outside Cabin

- Living space: 17 m² (max. 4 persons: 2 beds and up to 1 sofa bed or double sofa bed)*
- The beds can be arranged together or separated, as desired.
- Wheelchair-accessible cabins available (3000, 3002, 3003, 3005)



Room example *Mein Schiff 7*



Floor plan example *Mein Schiff 7*

*The positioning of the beds can vary.

Single Cabin Inside

- Living space: 8 m² (1 person)



Room example *Mein Schiff 7*



Floor plan example *Mein Schiff 7*

Single Cabin Outside

- Living space: 8 m² (1 person)



Room example *Mein Schiff 7*



Balcony Cabin

- Living space: 17 m² (max. 4 persons: 2 beds and 1 sofa bed or 1 double sofa bed)*
- Balcony size: 5–7 m² (1 table und 2 chairs)
- The beds can be arranged together or separated, as desired.
- Wheelchair-accessible cabins available (9039, 9041, 9043, 9045)



Room example *Mein Schiff 7*



Floor plan example *Mein Schiff 7*

*The positioning of the beds can vary.

SPA Balcony Cabin 貴

- Living space: 17 m² (max. 3 persons: 2 beds and up to 1 sofa bed)*
- Balcony size: 5 m² (1 table und 2 chairs)
- The beds can be arranged together or separated, as desired.

For voyages of less than 5 nights, some services from the feel-good package can only be offered in a different form.



Room example *Mein Schiff 7*

Special features if booking the SPA Balcony Cabin:

- Special SPA care products
- 1 beach bag and 1 keychain per person
- Selected towels, bedding and bathrobe

Your inclusive feel-good package:

- One soothing body treatment per adult in our SPA & Meer area
- Personal consultation, one individual coaching and health check per adult with our experts from the Sport & Health section
- Further offers exclusively for SPA Balcony Cabin guests



Floor plan example *Mein Schiff 7*

Premium Veranda Cabin 貴

- Living space: 17 m² (max. 3 persons: 2 beds and up to 1 sofa bed)*
- Veranda size: 30 m² (1 table, 2 chairs, 2 loungers and 1 hammock)
- The beds can be arranged together or separated, as desired.



Room example *Mein Schiff 7*



Floor plan example *Mein Schiff 7*

*The positioning of the beds can vary.

Family Cabin Outside 貴

- Living space: 29–44 m² (at least 3 up to max. 6 persons: 2 beds, 1 double sofa bed and 1 bunk bed or 2 beds and 1 double sofa bed)*
- The beds can be arranged together or separated, as desired.
- Curtains as room separation between living and sleeping areas
- Game console



Room example *Mein Schiff 7*



Floor plan example *Mein Schiff 7*

Family Cabin Balcony 貴

- Living space: 25 m² (at least 3 up to max. 5 persons: 2 beds, 1 double sofa bed and 1 pullman bed)*
- Balcony size: 15 m² (1 table, 4 chairs und 1 lounger)
- The beds can be arranged together or separated, as desired.
- Curtains as room separation between living and sleeping areas
- Game console



Room example *Mein Schiff 7*



Floor plan example *Mein Schiff 7*

Details of cabins are subject to change. Colour and furnishings may vary within a cabin category and between ships. | Please note: If you would like a baby cot (limited number) in your cabin, we kindly ask you to request this in advance, as it is not possible to set it up in all cabins.

Suites and Junior Suites

Mein Schiff 7

Junior Suite Balcony

- Living space: 26 m² (max. 4 persons: 2 beds and 1 double sofa bed)
- Balcony size: 7 m² (1 table and 2 chairs with footrest)
- The beds can be arranged together or separated, as desired.
- Wheelchair-accessible cabins available (10020, 10025)



Room example *Mein Schiff 1* (design and colours can vary)



Floor plan example *Mein Schiff 1*

Schöne Aussicht Suite

- Living space: 39 m² (max. 4 persons: 2 beds and 1 double sofa bed)
- Balcony size: 13–14 m² (1 table, 2 chairs, 2 loungers, 1 hammock with side table)
- The beds can be arranged together or separated, as desired.



Room example *Mein Schiff 1* (design and colours can vary)



Floor plan example *Mein Schiff 1*

*The positioning of the beds can vary.

Himmel & Meer Suite

- Living space: 42 m² (max. 4 persons: 2 beds and 1 double sofa bed)
- Veranda size: 29 m² (1 table, 4 chairs, 2 loungers, 1 hammock, 1 wicker chair, deck terrace has partial sun protection)
- The beds can be arranged together or separated, as desired.
- Open plan living and sleeping area



Room example *Mein Schiff 1* (design and colours can vary)



Floor plan example *Mein Schiff 1* (living area)



Room example *Mein Schiff 1* (design and colours can vary)



Floor plan example *Mein Schiff 1* (deck terrace)

You can discover further suite categories in the table on page 51 and at www.meinschiff.com/kabinen Or simply scan the QR code.



*The positioning of the beds can vary.



The wonders of the earth within your grasp.

On your journey with the *Mein Schiff*® fleet, you can look forward to a variety of ways to experience and enjoy your destination intensively. Whether you want to explore exciting cities or be active in the midst of spectacular landscapes: Choose your individual favourites from our varied shore excursions and explore the world according to your wishes.

Off ship. Off to great adventures.

Make your trip an unforgettable experience – and enjoy your favourite destinations according to your wishes. You like to explore the country and its people in terms of culinary traditions, activities or from the water? Just choose the right programme for you from among the various excursion categories – from the classic city tour to a sporty bike trip, there is something for everyone here.

You can be sure: With our shore excursions or those organised by our selected partners, you can experience your discovery tours in a relaxed way – and take all the facets and impressions of your destination home with you.



A quad bike ride away from tourist routes, gliding over the water in a canoe or experiencing real flights of fancy – in our excursion categories you will find everything you need for a dream holiday.



Our tip:

Book the PRO tariff and enjoy a 20% discount on all shore excursions.



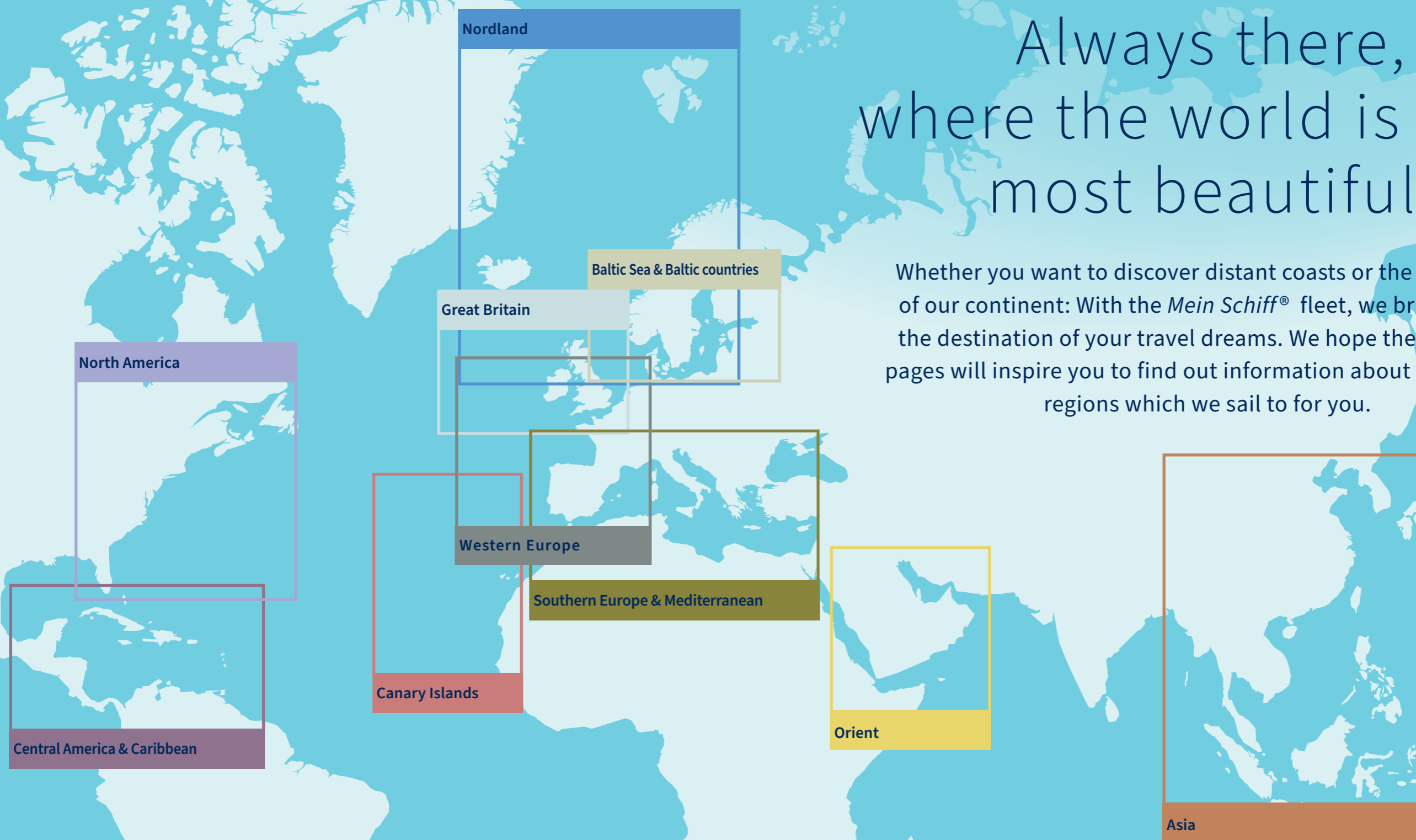
Whether it's fascinating nature or exciting metropolises: With the help of TUI Cruises, all fans of fresh air and exercise can experience the country and people up close in the saddle of our first-class bicycles.

You have the choice. And the benefits:

- The excursions are well organised and can be combined with your cruise in a stress-free way.
- The tour operators and insurance protection are regularly checked.
- No hidden costs, transparent and comfortable invoicing via your onboard account
- English-speaking supervision
- The times of the excursions can be adapted if the ship's laytime changes.
- Wait guarantee: We don't set sail until all guests from the excursions organised by us are back on board.

Always there,
where the world is at its
most beautiful.

Whether you want to discover distant coasts or the highlights of our continent: With the *Mein Schiff*® fleet, we bring you to the destination of your travel dreams. We hope the following pages will inspire you to find out information about the various regions which we sail to for you.



The most modern fleet on the world's seas.

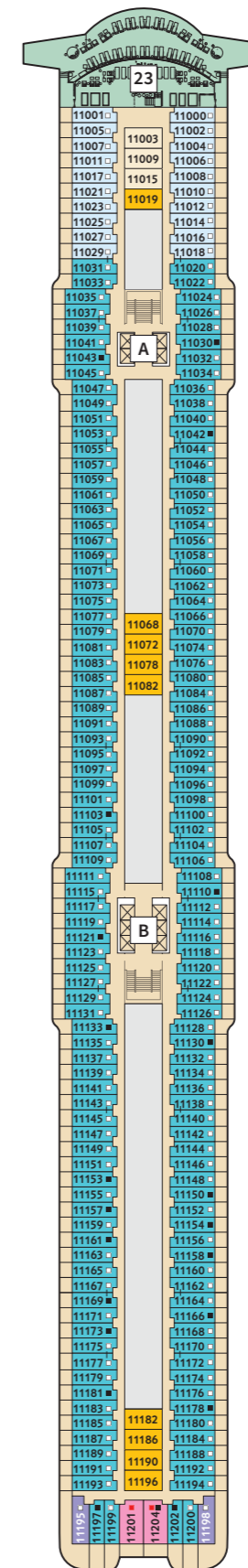
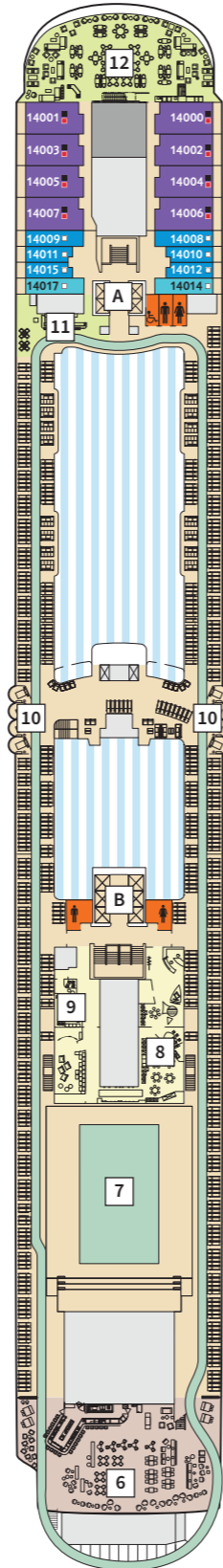
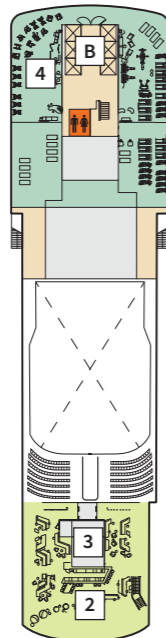
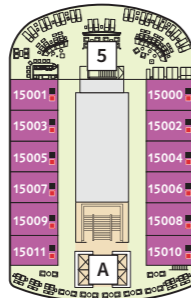
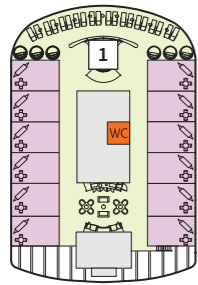
Whichever of our ships you decide for: On the youngest and most modern fleet of the world's seas, unforgettable moments are waiting for you, an unusual amount of space and boundless opportunities. That's because everything on board is completely attuned to your wishes.



Deck plans

Mein Schiff 1

Mein Schiff 2



Cabin categories*

- 15000 Himmel & Meer Suite
- 14000 Übersee Suite
- 11201 Junior Suite
- 11195 Premium Veranda Cabin
- 11000 SPA Balcony Cabin
- 14009 Balcony Cabin Cat. A
- 14017 Balcony Cabin Cat. F
- 11003 Inside Cabin Cat. A
- 11019 Inside Cabin Cat. C

Key

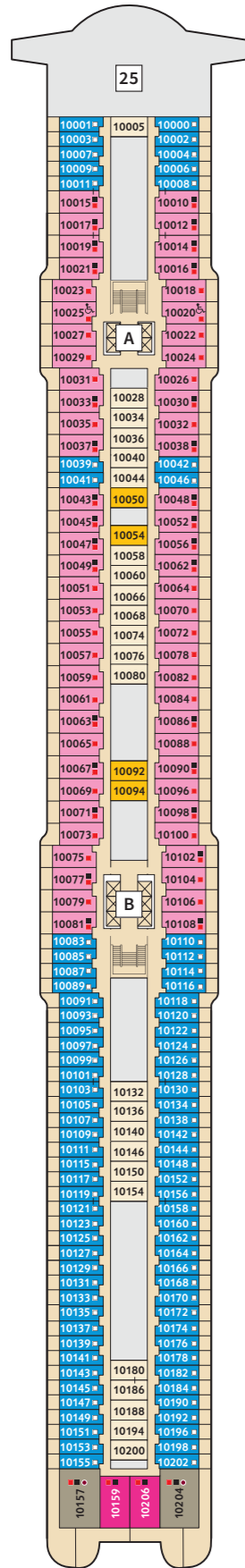
- Restaurant
- Bar
- SPA & Sport
- Entertainment/Theatre
- Operational rooms
- Kitchen

- Connecting door
- Sofa bed
- Double sofa bed
- Beds cannot be separated
- Mein Schiff® Premium inclusive benefits
- Staircase
- Staircase
- X-Sun Deck
- Hoheluft Bar
- Crow's nest
- Sport & Health
- X-Bar
- Außenalster – Bar & Grill
- Arena
- Insel der Seeräuber – Kids Club
- Nest – Baby Room
- Relax Loges
- Überschau Bar
- X-Lounge
- Fish Market Restaurant
- Anckelmannsplatz – Buffet-Restaurant
- Backstube – Bakery Corner
- Bosphorus – Snackbar
- Laguna
- Towel Service
- Unverzicht Bar
- Eis Bar – Ice Cream
- Swimming Pool
- Ruhepol – Bar & Lounge
- Sauna
- SPA & Meer

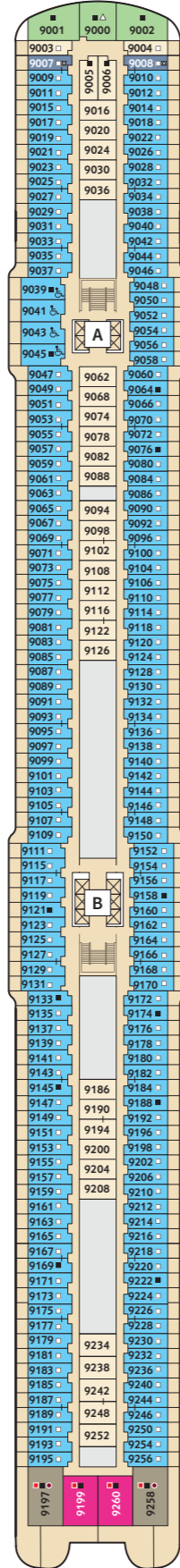
*Sample display of the cabin numbers. Subject to change.

For **inside cabins** with even cabin numbers, the following applies: Doors open starboard (on the right, when ship is facing forward). If your inside cabin has an odd cabin number, the door opens portside (on the left, when ship is facing forward).

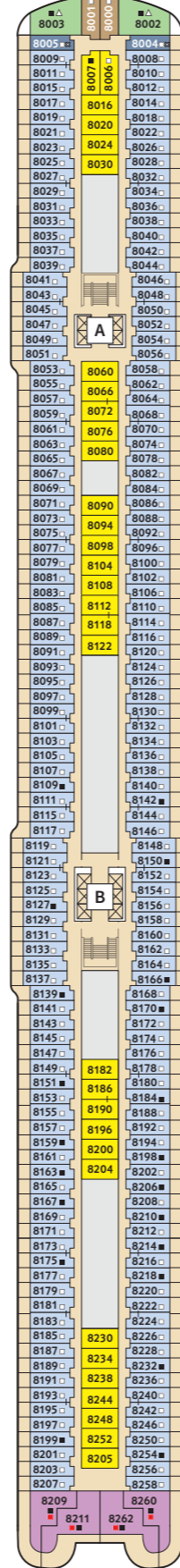
360° PANORAMAS:
www.meinschiff.com/mein-schiff-1
www.meinschiff.com/mein-schiff-2



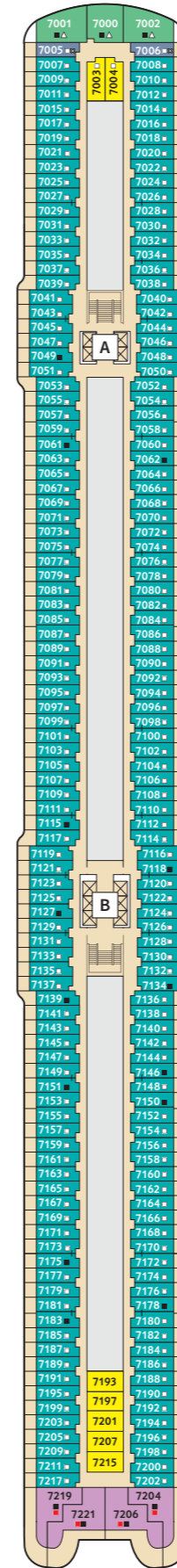
10 PERLE



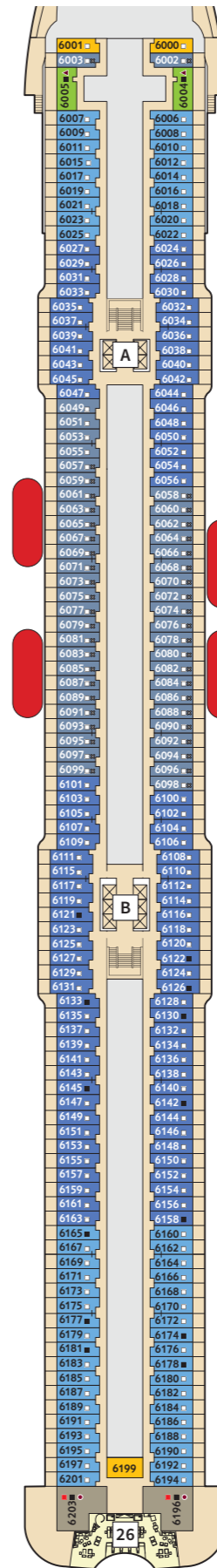
9 KORALLE



8 MUSCHEL



7 HANSE



6 BOJE

Cabin categories*

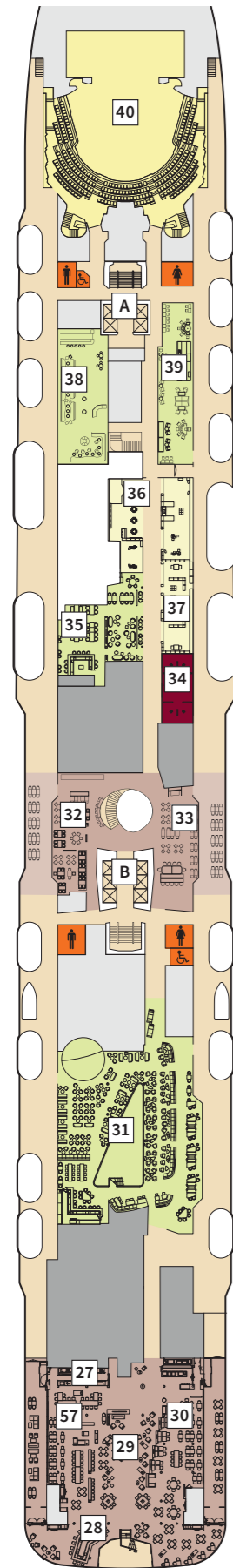
- 10157 Panorama Suite
- 10206 Schöne Aussicht Suite
- 8209 Horizont Suite
- 10015 Junior Suite
- 6004 Family Cabin Balcony
- 9000 Family Cabin Outside Cat. A
- 7000 Family Cabin Outside Cat. B
- 10000 Balcony Cabin Cat. A
- 9009 Balcony Cabin Cat. B
- 8009 Balcony Cabin Cat. C
- 7007 Balcony Cabin Cat. D
- 6007 Balcony Cabin Cat. E
- 6024 Balcony Cabin Cat. G
- 9007 Balcony Cabin Cat. H
- 8000 Outside Cabin Cat. A
- 10005 Inside Cabin Cat. A
- 8007 Inside Cabin Cat. B
- 10050 Inside Cabin Cat. C

- Key**
- Restaurant
 - Bar
 - SPA & Sport
 - Entertainment/Theatre
 - Operational rooms
 - Kitchen
 - Restricted view owing to ship's boat on deck 5

- Wheelchair-accessible cabin
- Connecting door
- Bunk bed
- Sofa bed
- Double sofa bed
- Additional bedroom with double bed
- Pullman bed (fold-out upper bed)
- Cabin with restricted view
- Beds cannot be separated
- Staircase
- Bridge
- X-Panorama Deck

*Sample display of the cabin numbers. Subject to change.

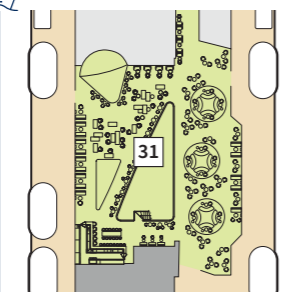
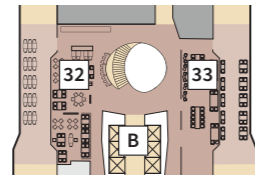
For **inside cabins** with even cabin numbers, the following applies: Doors open starboard (on the right, when ship is facing forward). If your inside cabin has an odd cabin number, the door opens portside (on the left, when ship is facing forward).



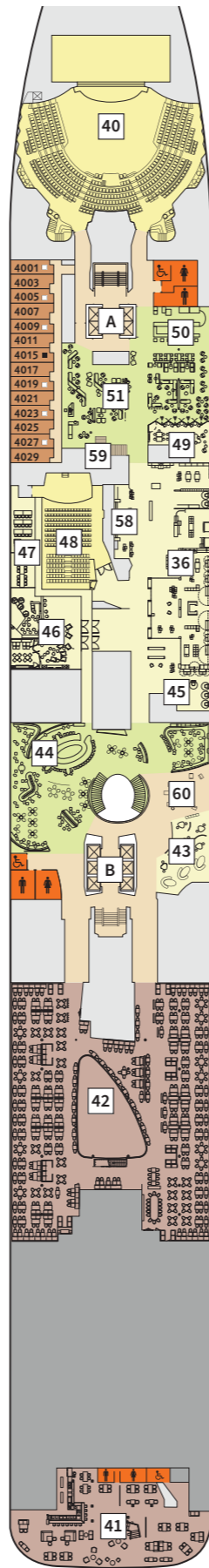
5 PIER



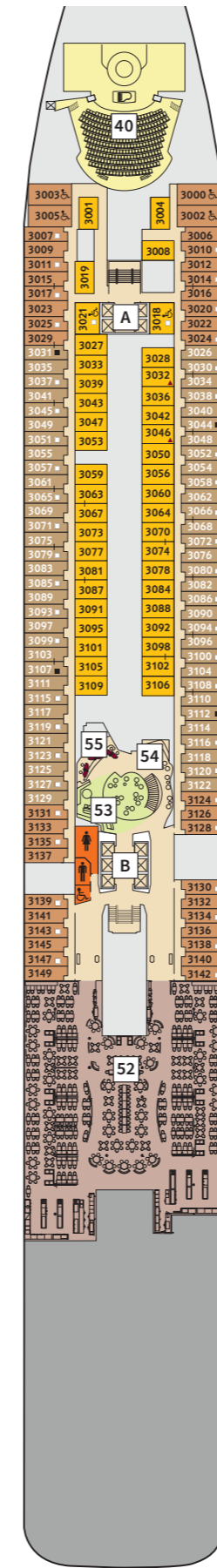
Feeling hungry even though it's late? Or you fancy a dinner between lunch and evening meal? The Tag & Nacht – Bistro is open for you almost 24 hours a day.



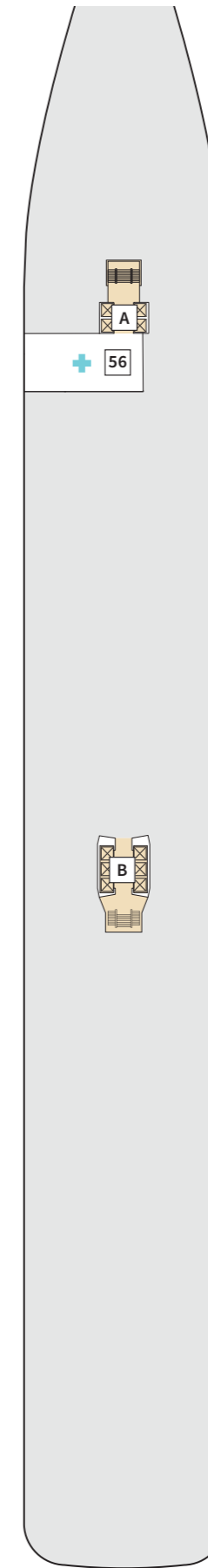
The Schau Bar on **Mein Schiff 2** is waiting for you with its modern seating arrangements and lounge furniture.



4 SEESTERN



3 ATLANTIK



2 ANKER

Cabin categories*

- 3031 Outside Cabin Cat. A
- 4001 Outside Cabin Cat. B
- 3001 Inside Cabin Cat. C

Key

- Restaurant
- Bar
- SPA & Sport
- Entertainment/Theatre
- Operational rooms
- Kitchen
- Wheelchair-accessible cabin
- Connecting door
- Bunk bed
- Sofa bed
- Double sofa bed
- Additional bedroom with 2 beds
- Pullman bed (fold-out upper bed)
- Cabin with restricted view
- Beds cannot be separated

Mein Schiff® Premium inclusive benefits

- A B Staircase
- 27 Manufaktur – Creative Cooking
- 28 Diamant Bar
- 29 Große Freiheit – Exclusive Lounge
- 30 Surf & Turf – Steakhouse
- 31 Schau Bar
- 32 Ganz Schön Gesund – Bistro
- 33 Tag & Nacht – Bistro
- 34 Onboard Travel Management
- 35 Ebbe & Flut – Beer Bar
- 36 Neuer Wall – Shopping Arcades
- 37 Photo Gallery with Photo Studio
- 38 Abtanz Bar – Discotheque
- 39 Casino & Lounge
- 40 Theatre
- 41 Esszimmer – German Dishes
- 42 Atlantik – Mediterranean Restaurant
- 43 Shore excursions, golf & cycling
- 44 TUI Bar
- 45 Hairdresser & Barber Shop
- 46 Sturmfrei – Teens Lounge
- 47 Conference rooms
- 48 Stage
- 49 Atelier
- 50 Gallery Bar
- 51 Gallery
- 52 Atlantik – Classic Restaurant
- 53 Saftwerft – Juice Bar
- 54 Library
- 55 Reception
- 56 Hospital
- 57 Cucimare – Italian Manufactory
- 58 Tattoo Studio
- 59 Travel Agency (*Mein Schiff 1*)
- 60 Travel Agency (*Mein Schiff 2*)

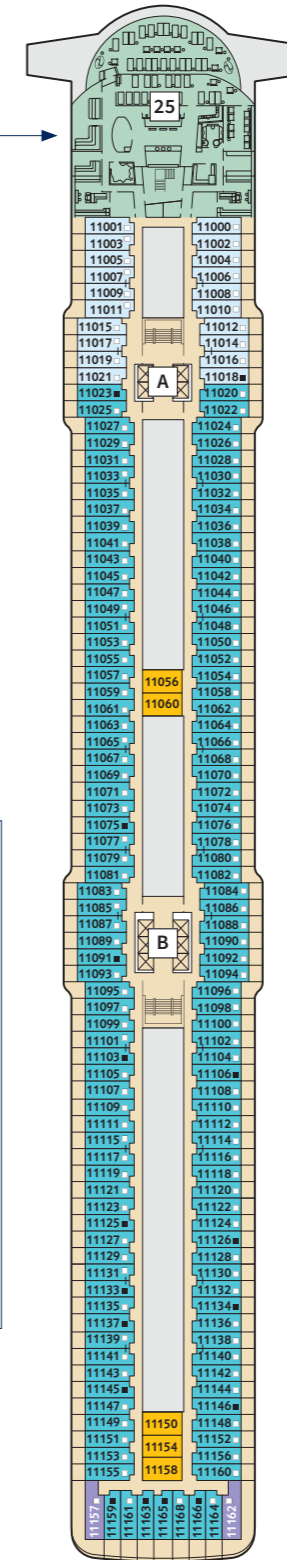
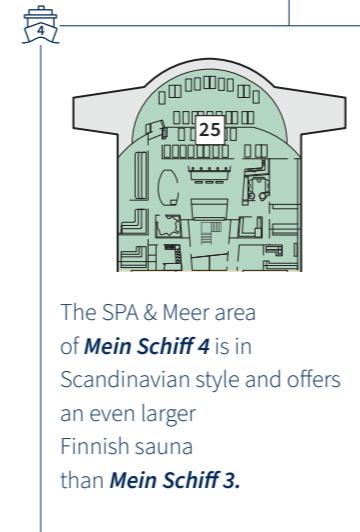
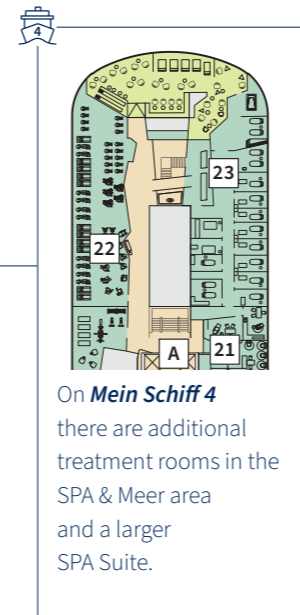
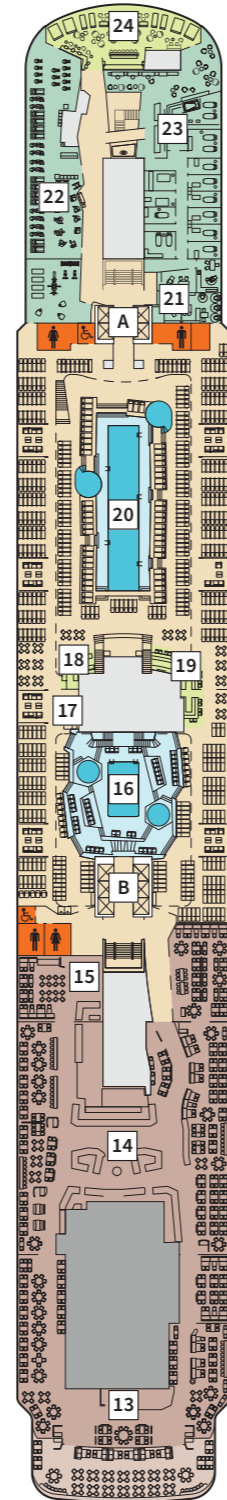
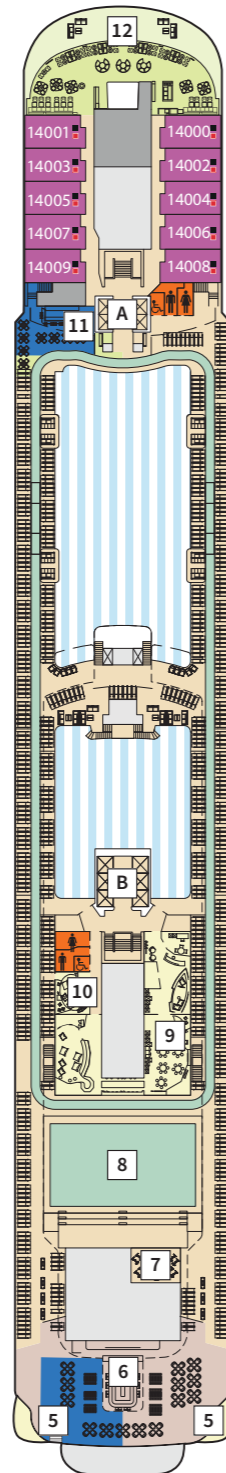
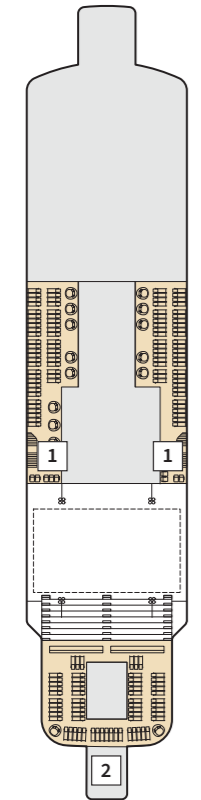
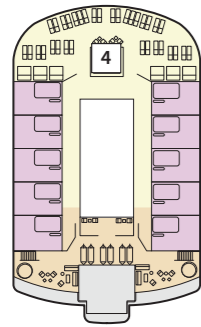
*Sample display of the cabin numbers. Subject to change.
**Casino gaming is not included in *Mein Schiff*® Premium inclusive benefits.

For **inside cabins** with even cabin numbers, the following applies: Doors open starboard (on the right, when ship is facing forward). If your inside cabin has an odd cabin number, the door opens portside (on the left, when ship is facing forward).

Deck plans

Mein Schiff 3

Mein Schiff 4



Cabin categories*

- 14000 Himmel & Meer Suite
- 11162 Premium Veranda Cabin
- 11000 SPA Balcony Cabin
- 11020 Balcony Cabin Cat. F
- 11060 Inside Cabin Cat. C

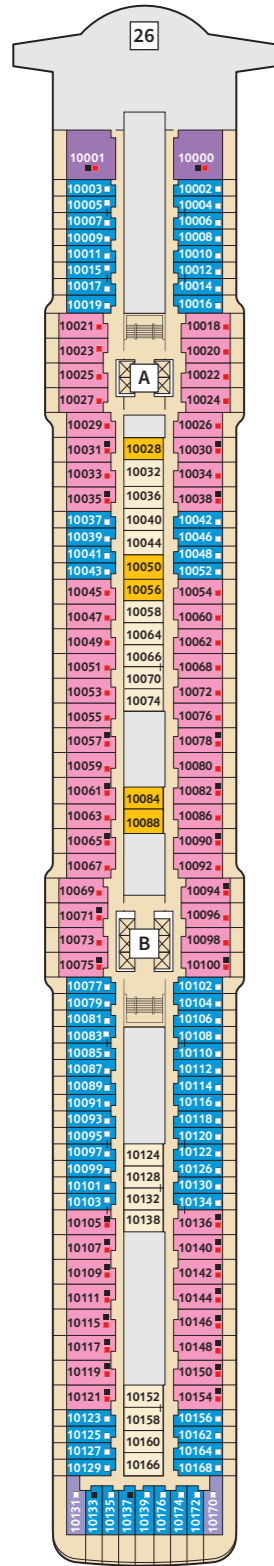
Key

- Restaurant
 - Bar
 - SPA & Sport
 - Entertainment/Theatre
 - Operational rooms
 - Kitchen
 - Smoker's area
- Connecting door
 - Sofa bed
 - Double sofa bed
 - Beds cannot be separated
 - Mein Schiff*® Premium inclusive benefits
 - A B Staircase
 - 1 Sun Deck
 - 2 Crow's nest
 - 4 X-Sun Deck
 - 5 Blauer Balkon
 - 6 Außenalster – Bar & Grill
 - 7 Cycling Room
 - 8 Arena
 - 9 Insel der Seeräuber – Kids Club
 - 10 Nest – Baby Room
 - 11 Überschau Bar
 - 12 X-Lounge
 - 13 Gosch Sylt – Fish Restaurant
 - 14 Anckelmannsplatz – Buffet-Restaurant
 - 15 Backstube – Bakery Corner
 - 16 Indoor Pool
 - 17 Towel Service
 - 18 Eis Bar – Ice Cream
 - 19 Unverzicht Bar
 - 20 Outdoor Pool
 - 21 Hairdresser
 - 22 Sport & Health
 - 23 SPA & Meer
 - 24 Himmel & Meer Lounge
 - 25 Sauna

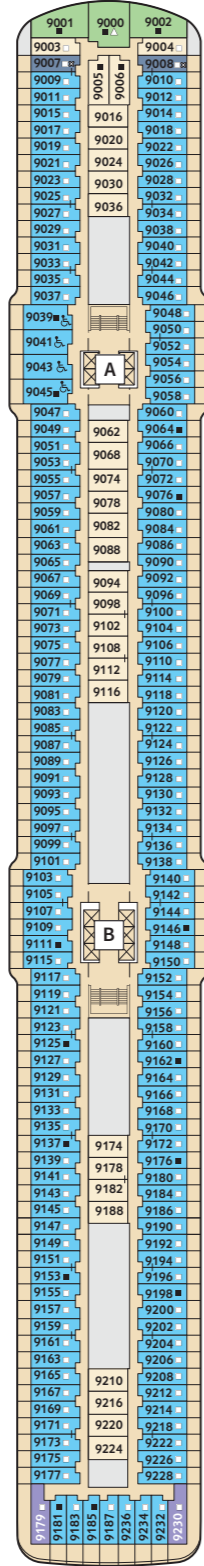
*Sample display of the cabin numbers. Subject to change.

For **inside cabins** with even cabin numbers, the following applies: Doors open starboard (on the right, when ship is facing forward). If your inside cabin has an odd cabin number, the door opens portside (on the left, when ship is facing forward).

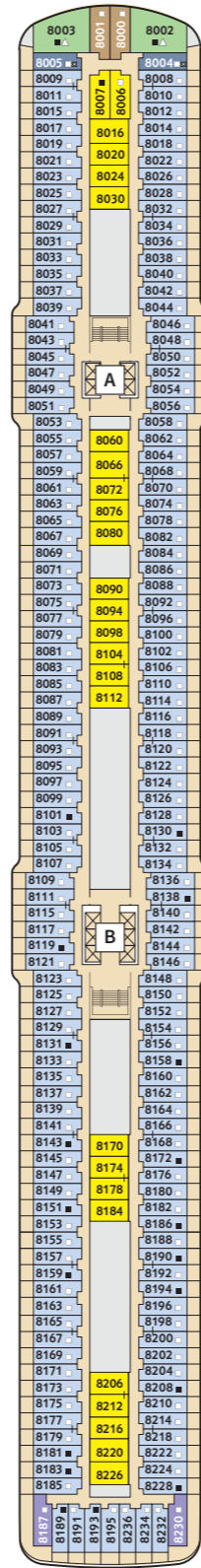
360° PANORAMAS:
www.meinschiff.com/mein-schiff-3
www.meinschiff.com/mein-schiff-4



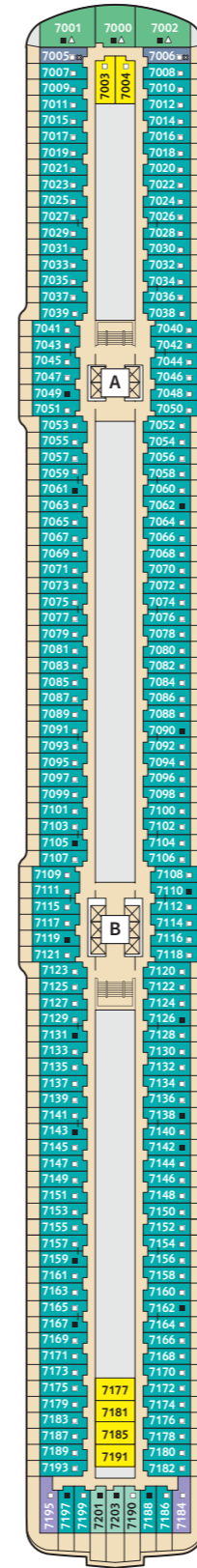
10 PERLE



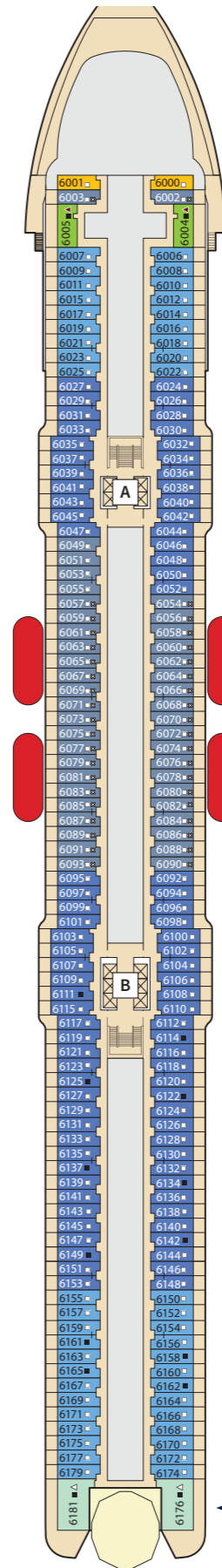
9 KORALLE



8 MUSCHEL



7 HANSE



6 BOJE

Cabin categories*

- 10000 Themen Suite
- 10018 Junior Suite
- 6176 Family Cabin Veranda Deluxe (Mein Schiff 3)
- 6176 Diamant Suite (Mein Schiff 4)
- 6004 Family Cabin Balcony
- 9000 Family Cabin Outside Cat. A
- 7000 Family Cabin Outside Cat. B
- 10031 Premium Veranda Cabin
- 7201 Combi Balcony Cabin
- 10003 Balcony Cabin Cat. A
- 9009 Balcony Cabin Cat. B
- 8008 Balcony Cabin Cat. C
- 7007 Balcony Cabin Cat. D
- 6006 Balcony Cabin Cat. E
- 6024 Balcony Cabin Cat. G
- 6049 Balcony Cabin Cat. H
- 8000 Outside Cabin Cat. A
- 10032 Inside Cabin Cat. A
- 8006 Inside Cabin Cat. B
- 10028 Inside Cabin Cat. C

Key

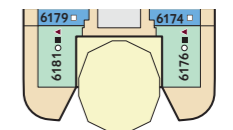
- Restaurant
- Bar
- SPA & Sport
- Entertainment/Theatre
- Operational rooms
- Kitchen
- Restricted view owing to ship's boat on deck 5
- Connecting door
- Wheelchair-accessible cabin
- Bunk bed
- Single bed
- Sofa bed
- Double sofa bed
- Pullman bed (fold-out upper bed)
- Beds cannot be separated
- Cabin with restricted view
- A Staircase
- B Staircase
- 26 Bridge

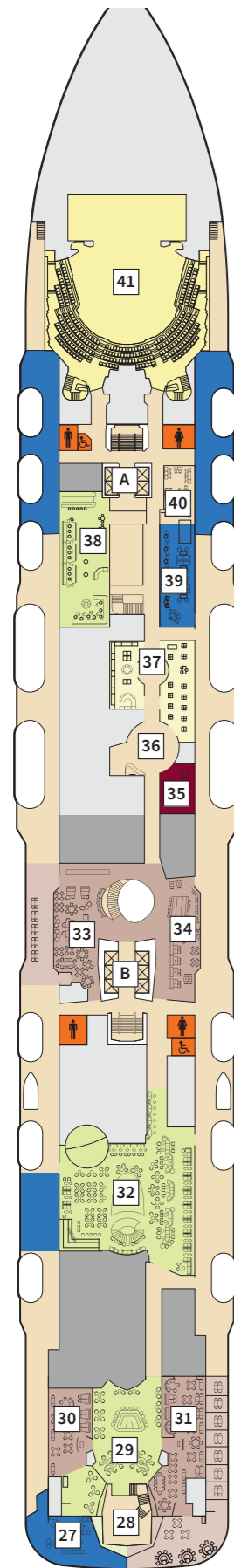
*Sample display of the cabin numbers. Subject to change.

For **inside cabins** with even cabin numbers, the following applies: Doors open starboard (on the right, when ship is facing forward). If your inside cabin has an odd cabin number, the door opens portside (on the left, when ship is facing forward).



Mein Schiff 4 has 2 Diamant Suites at the stern.





Casino & Lounge on **Mein Schiff 4** with indoor smokers' area

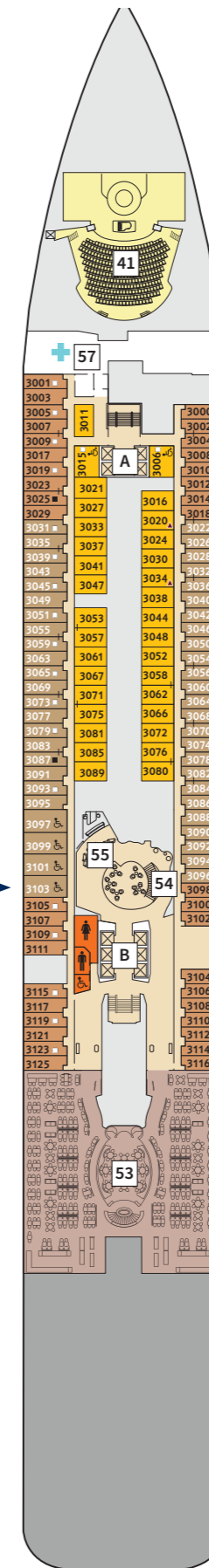
The Große Freiheit on **Mein Schiff 4**: the Surf & Turf – Steakhouse with large outside area as well as 3 BBQ tables with integrated grills, the newly designed La Spezia – Italian Eatery and the Diamant Bar with its larger seating area.



On **Mein Schiff 3** the Gröone Bar offers a wide-ranging selection of drinks without extra charge. In the same area you will find on **Mein Schiff 4** the maritime Waterkant – Bar & Lounge.

The Spielbudenplatz with games and lounge furniture offers more space to spend together.

The Saftwerft – Juice Bar can be found on board **Mein Schiff 4**.



Cabin categories*

- 3101 Outside Cabin Cat. A
- 3125 Outside Cabin Cat. B
- 3089 Inside Cabin Cat. C

Key

- Restaurant
- Bar
- SPA & Sport
- Entertainment/Theatre
- Operational rooms
- Kitchen
- Smoker's area

- Connecting door
- Wheelchair-accessible cabin
- Bunk bed
- Sofa bed
- Double sofa bed
- Pullman bed (fold-out upper bed)
- Cabin with restricted view

Mein Schiff® Premium inclusive benefits

- A B Staircase
- 27 Champagner Treff
- 28 Große Freiheit – Exclusive Lounge
- 29 Diamant Bar
- 30 La Spezia – Italian Eatery
- 31 Surf & Turf – Steakhouse
- 32 Schau Bar
- 33 Tag & Nacht – Bistro
- 34 Hanami – Asian Cuisine by Tim Raue
- 35 Onboard Travel Management
- 36 Photo Gallery
- 37 Neuer Wall – Shopping Arcades
- 38 Abtanz Bar – Discotheque
- 39 Rauchersalon – Smokers Lounge (Mein Schiff 3)
- 40 Casino (Mein Schiff 3) **
Casino & Lounge (Mein Schiff 4) **
- 41 Theatre
- 42 Café Lounge
- 43 Atlantik – Mediterranean Restaurant
- 44 Shore excursions, golf & cycling
- 45 TUI Bar
- 46 Klanghaus – Concert Hall
- 47 Conference rooms
- 48 Gröone Bar (Mein Schiff 3)
Waterkant – Bar & Lounge (Mein Schiff 4)
- 49 Atelier
- 49 Tattoo Studio
- 50 Travel Agency
- 51 Spielplatz – Gaming Area (Mein Schiff 3)
Spielbudenplatz – Gaming Area (Mein Schiff 4)
- 52 Sturmfrei – Teens Lounge
- 53 Atlantik – Classic Restaurant
- 54 Library
- 55 Reception
- 56 Saftwerft – Juice Bar (Mein Schiff 4)
- 57 Hospital

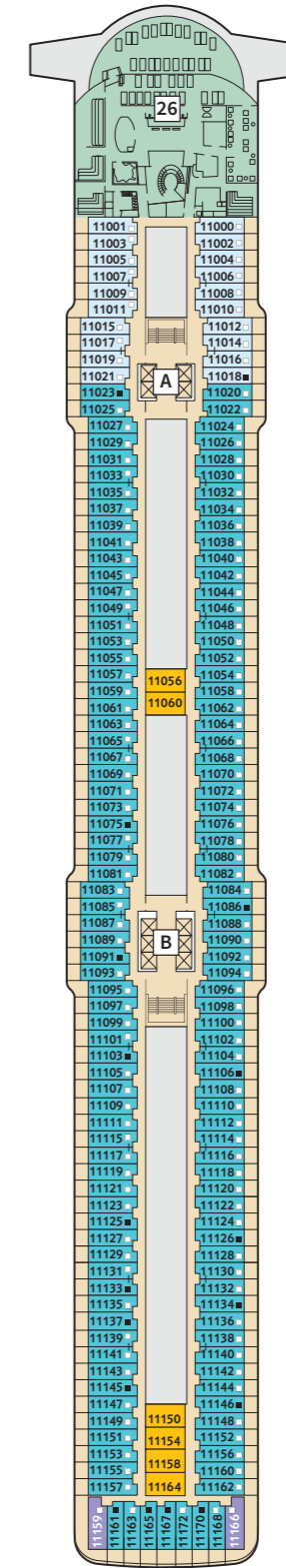
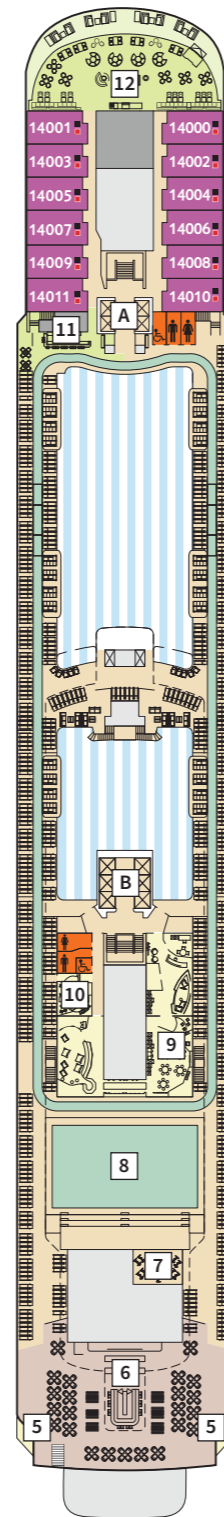
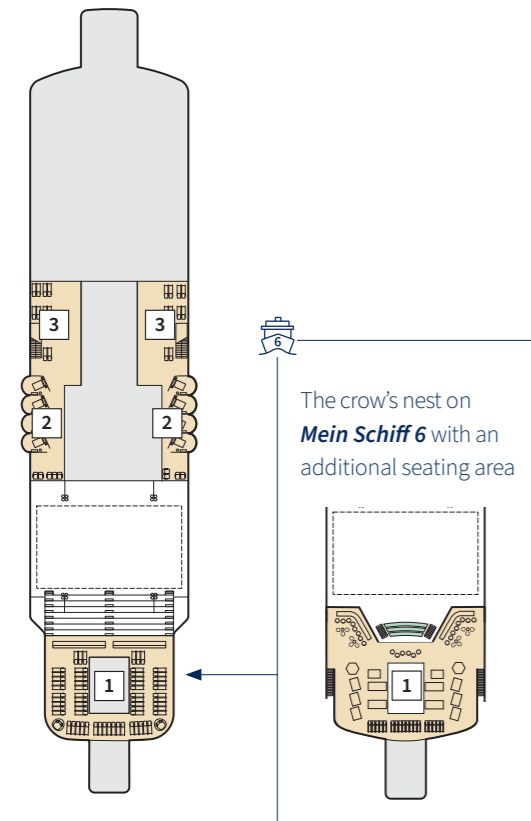
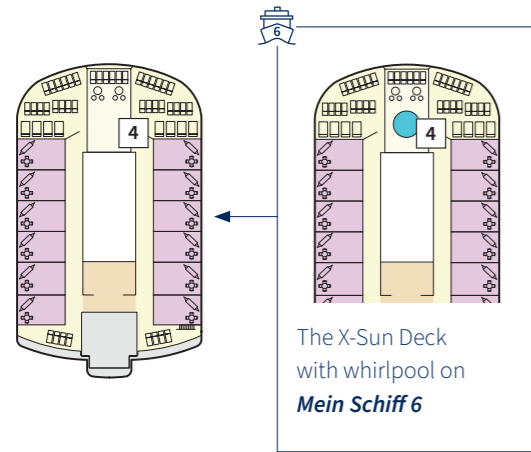
For **inside cabins** with even cabin numbers, the following applies: Doors open starboard (on the right, when ship is facing forward). If your inside cabin has an odd cabin number, the door opens portside (on the left, when ship is facing forward).

*Sample display of the cabin numbers. Subject to change.
**Casino gaming is not included in Mein Schiff® Premium inclusive benefits.

Deck plans

Mein Schiff 5

Mein Schiff 6



Cabin categories*

- 14000 Himmel & Meer Suite
- 11159 Premium Veranda Cabin
- 11000 SPA Balcony Cabin
- 11020 Balcony Cabin Cat. F
- 11056 Inside Cabin Cat. C

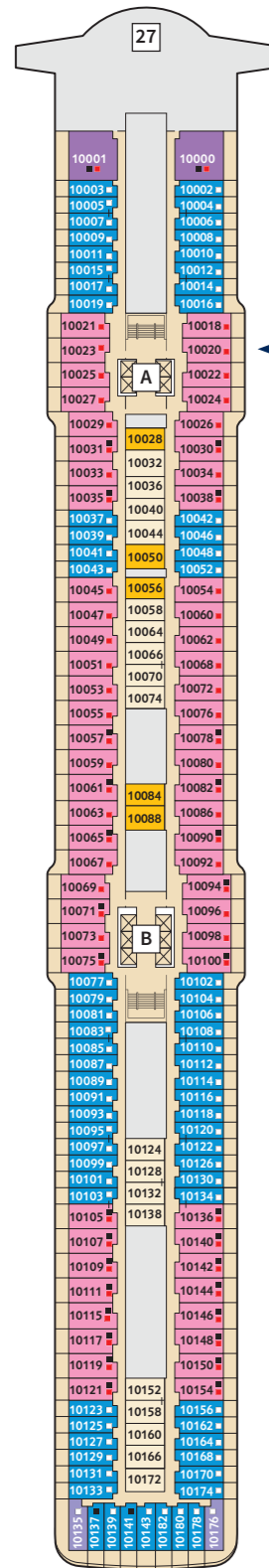
Key

- Restaurant
- Bar
- SPA & Sport
- Entertainment/Theatre
- Operational rooms
- Kitchen
- Connecting door
- Sofa bed
- Double sofa bed
- Beds cannot be separated
- Mein Schiff® Premium inclusive benefits
- A B Staircase
- 1 Crow's nest
- 2 Relax Loges
- 3 Sun Deck
- 4 X-Sun Deck
- 5 Blauer Balkon
- 6 Außenalster – Bar & Grill
- 7 Cycling Room
- 8 Arena
- 9 Insel der Seeräuber – Kids Club
- 10 Nest – Baby Room
- 11 Überschau Bar
- 12 X-Lounge
- 13 GOSCH Sylt – Fish Restaurant
- 14 Anckelmannsplatz – Buffet-Restaurant
- 15 Backstube – Bakery Corner
- 16 Bosphorus – Snack Bar
- 17 Laguna
- 18 Towel Service
- 19 Eis Bar – Ice Cream
- 20 Unverzicht Bar
- 21 Outdoor Pool
- 22 Hairdresser
- 23 Sport & Health
- 24 SPA & Meer
- 25 Himmel & Meer Lounge
- 26 Sauna

*Sample display of the cabin numbers. Subject to change.

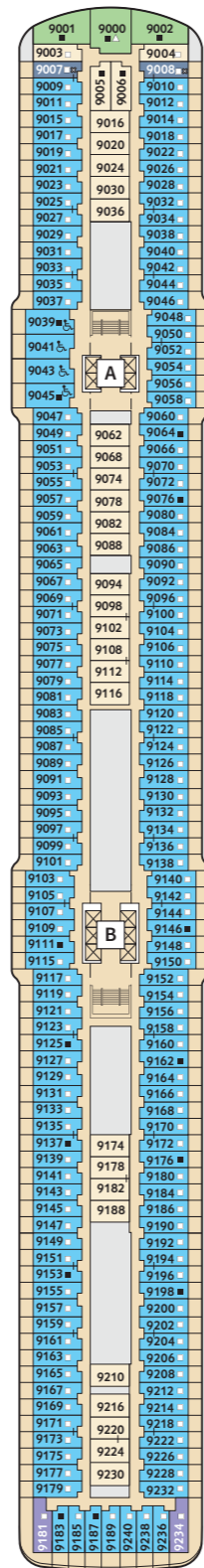
For **inside cabins** with even cabin numbers, the following applies: Doors open starboard (on the right, when ship is facing forward). If your inside cabin has an odd cabin number, the door opens portside (on the left, when ship is facing forward).

360° 360° PANORAMAS:
www.meinschiff.com/mein-schiff-5
www.meinschiff.com/mein-schiff-6

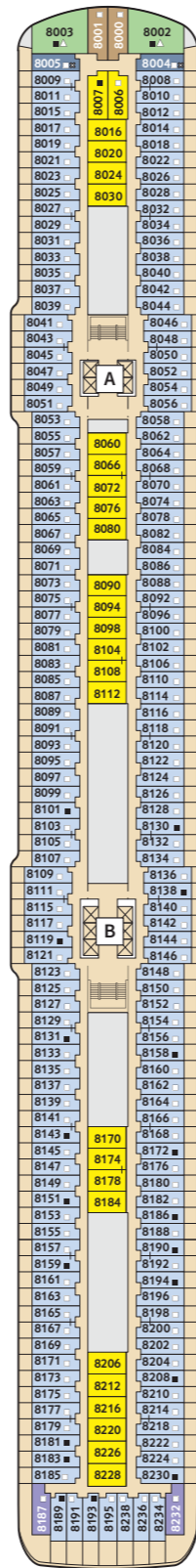


10 PERLE

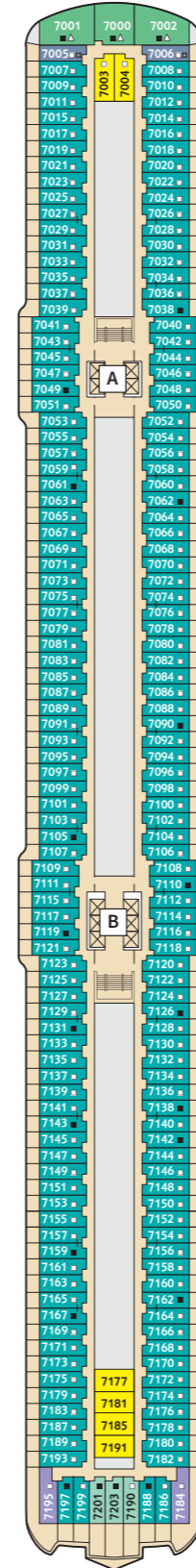
The Junior Suites 10020 and 10023 are located on **Mein Schiff 6** wheelchair-accessible



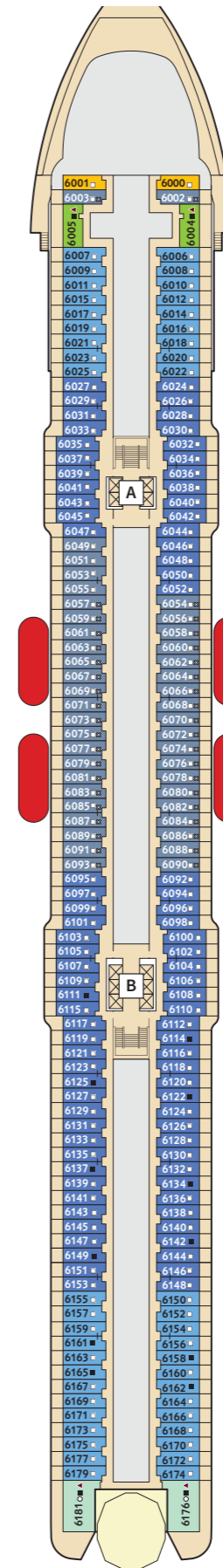
9 KORALLE



8 MUSCHEL



7 HANSE



6 BOJE

Cabin categories*

- 10000 Themen Suite
- 10018 Junior Suite
- 6176 Diamant Suite
- 6005 Family Cabin Balcony
- 9002 Family Cabin Outside Cat. A
- 7000 Family Cabin Outside Cat. B
- 9181 Premium Veranda Cabin
- 7201 Combi Balcony Cabin
- 10002 Balcony Cabin Cat. A
- 9009 Balcony Cabin Cat. B
- 8008 Balcony Cabin Cat. C
- 7007 Balcony Cabin Cat. D
- 6006 Balcony Cabin Cat. E
- 6024 Balcony Cabin Cat. G
- 6049 Balcony Cabin Cat. H
- 8000 Outside Cabin Cat. A
- 10032 Inside Cabin Cat. A
- 8006 Inside Cabin Cat. B
- 10028 Inside Cabin Cat. C

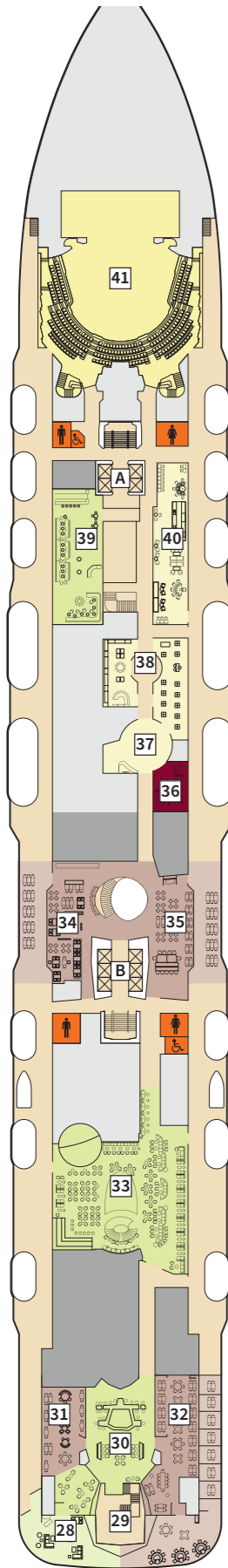
Key

- Restaurant
- Bar
- SPA & Sport
- Entertainment/Theatre
- Operational rooms
- Kitchen
- Restricted view area due to rescue boats on deck 5

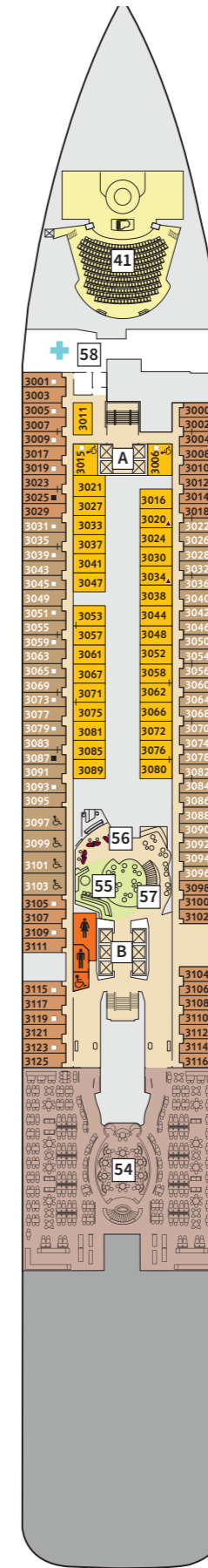
- Connecting door
- Wheelchair-accessible cabin
- Bunk bed
- Single bed
- Sofa bed
- Double sofa bed
- Pullman bed (fold-out upper bed)
- Beds cannot be separated
- Cabin with restricted view
- A Staircase
- B Staircase
- 27 Bridge

*Sample display of the cabin numbers. Subject to change.

For **inside cabins** with even cabin numbers, the following applies: Doors open starboard (on the right, when ship is facing forward). If your inside cabin has an odd cabin number, the door opens portside (on the left, when ship is facing forward).



Neuer Wall – Shopping arcades on *Mein Schiff 6*. Discover the variety of shops in an open room concept with lounge atmosphere.



Cabin categories*

- 3101 Outside Cabin Cat. A
- 3125 Outside Cabin Cat. B
- 3089 Inside Cabin Cat. C

Key

- Restaurant
- Bar
- SPA & Sport
- Entertainment/Theatre
- Operational rooms
- Kitchen

- Connecting door
- Wheelchair-accessible cabin
- Bunk bed
- Sofa bed
- Double sofa bed
- Pullman bed (fold-out upper bed)
- Cabin with restricted view
- Mein Schiff*® Premium inclusive benefits

A B Staircase

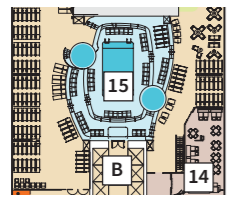
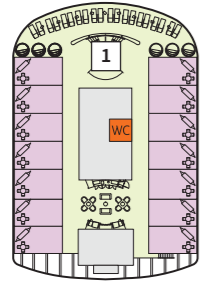
- 28 Champagner Treff
- 29 Große Freiheit – Exclusive Lounge
- 30 Diamant Bar
- 31 Schmankerl – Austrian Eatery
- 32 Surf & Turf – Steakhouse
- 33 Schau Bar
- 34 Osteria – Pizza e Pasta
- 35 Tag & Nacht – Bistro
- 36 Onboard Travel Management
- 37 Photo Gallery
- 38 Neuer Wall – Shopping Arcades
- 39 Abtanz Bar – Discotheque
- 40 Casino & Lounge
- 41 Theatre
- 42 Hanami – Asian Cuisine by Tim Raue
- 43 Atlantik – Mediterranean Restaurant
- 44 Shore excursions, golf & cycling
- 45 TUI Bar
- 46 Studio
- 47 Studio Bar
- 48 Conference Room
- 49 Gallery
- 50 Gallery Bar
- 51 Atelier
- 51 Tattoo Studio (*Mein Schiff 5*)
- 52 Spielplatz – Video Games
- 53 Sturmfrei – Teens Lounge
- 54 Atlantik – Classic Restaurant
- 55 Nasch Bar (*Mein Schiff 5*)
- 55 Café Bar (*Mein Schiff 6*)
- 56 Reception
- 57 Library
- 58 Hospital
- 59 Permanent Make-up & More (*Mein Schiff 6*)
- 60 Travel Agency (*Mein Schiff 6*)

*Sample display of the cabin numbers. Subject to change.
 **Casino gaming is not included in *Mein Schiff*® Premium inclusive benefits.

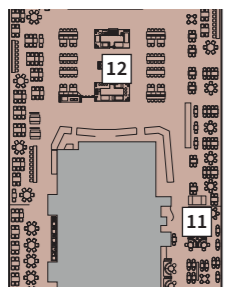
For **inside cabins** with even cabin numbers, the following applies: Doors open starboard (on the right, when ship is facing forward). If your inside cabin has an odd cabin number, the door opens portside (on the left, when ship is facing forward).

Deck plans

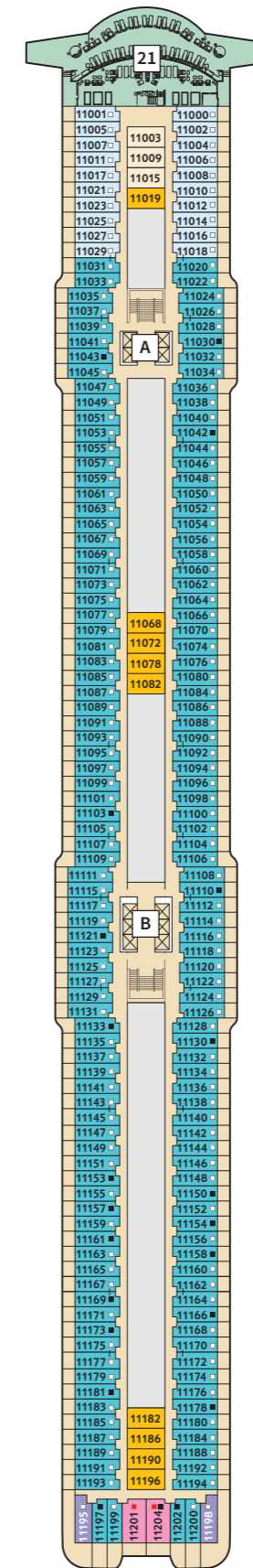
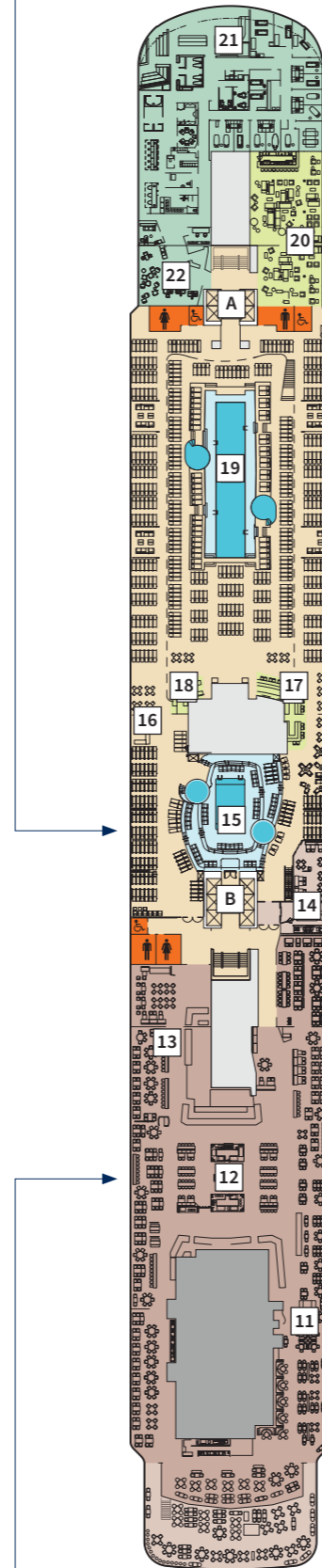
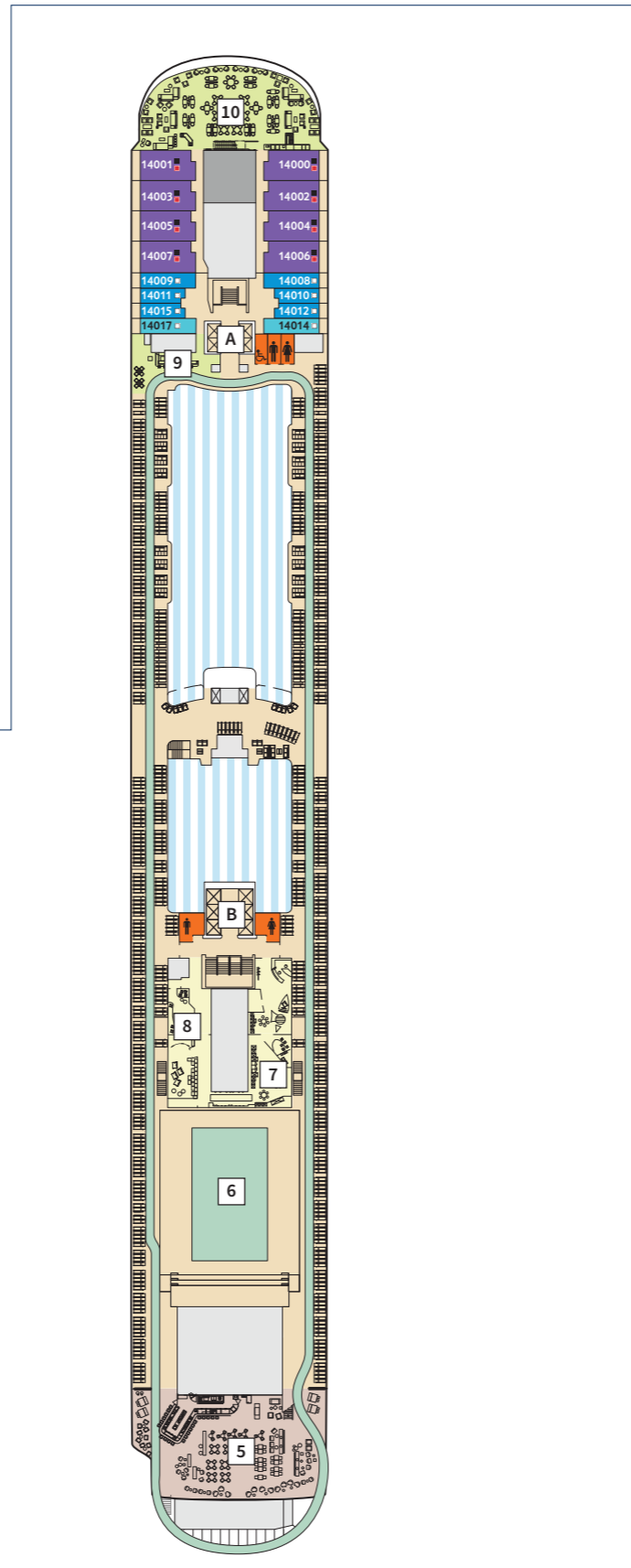
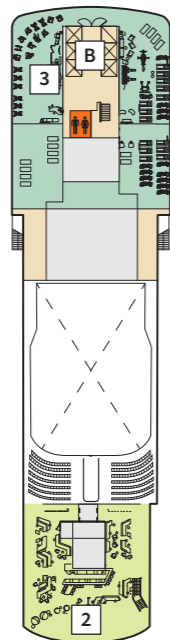
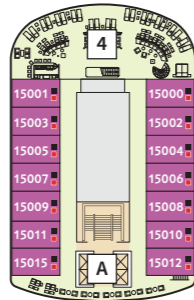
Mein Schiff 7



Thanks to a canopy over the Lagune you can also enjoy relaxing hours in the indoor pool on **Mein Schiff 7**, even if the weather is poor.



As well as table service in the Fischmarkt, there is also a gourmet buffet with a wide variety of maritime delicacies for you.



Cabin categories*

- 15000 Himmel & Meer Suite
- 14000 Übersee Suite
- 11201 Junior Suite
- 11195 Premium Veranda Cabin
- 11000 SPA Balcony Cabin
- 14009 Balcony Cabin Cat. A
- 14017 Balcony Cabin Cat. F
- 11003 Inside Cabin Cat. A
- 11019 Inside Cabin Cat. C

Key

- Restaurant
- Bar
- SPA & Sport
- Entertainment/Theatre
- Operational rooms
- Kitchen

- Connecting door
- Sofa bed
- Double sofa bed
- Beds cannot be separated

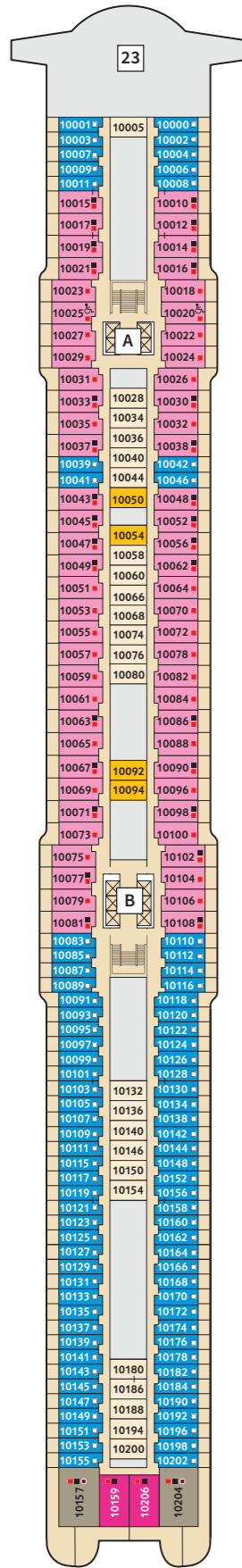
Mein Schiff® Premium inclusive benefits

- A B Staircase
- 1 X-Sun Deck
- 2 Hoheluft Bar
- 3 Sport & Health
- 4 X-Bar
- 5 Außenalster – Bar & Grill
- 6 Arena
- 7 Insel der Seeräuber – Kids Club
- 8 Nest – Baby Room
- 9 Überschau Bar
- 10 X-Lounge
- 11 Fish Market Restaurant
- 12 Anckelmannsplatz – Buffet-Restaurant
- 13 Backstube – Bakery Corner
- 14 Bosphorus Snackbar
- 15 Indoor Pool
- 16 Towel Service
- 17 Unverzicht Bar
- 18 Eis Bar – Ice Cream
- 19 Outdoor Pool
- 20 Ruhepol – Bar & Lounge
- 21 Sauna
- 22 SPA & Meer

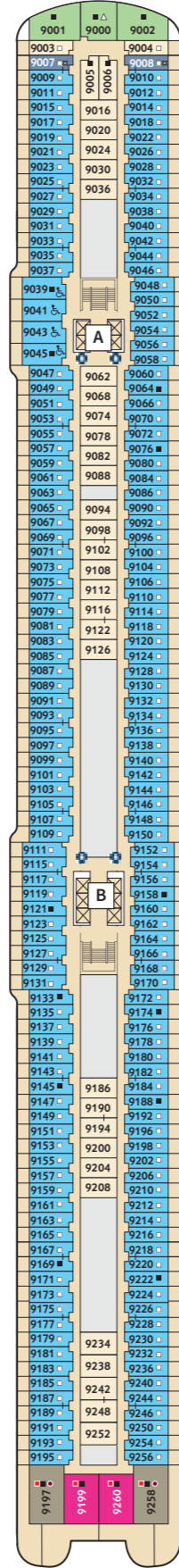
*Sample display of the cabin numbers. Subject to change.

For **inside cabins** with even cabin numbers, the following applies: Doors open starboard (on the right, when ship is facing forward). If your inside cabin has an odd cabin number, the door opens portside (on the left, when ship is facing forward).

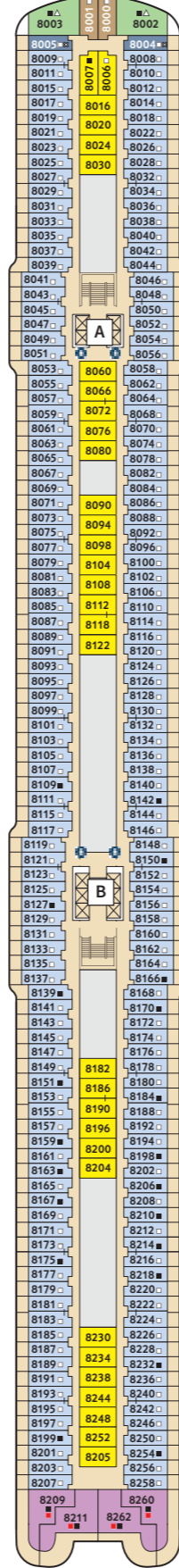
360° PANORAMAS:
www.meinschiff.com/mein-schiff-7



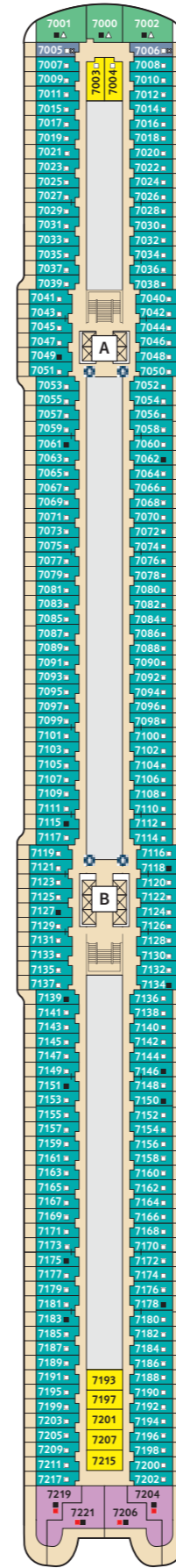
10 PERLE



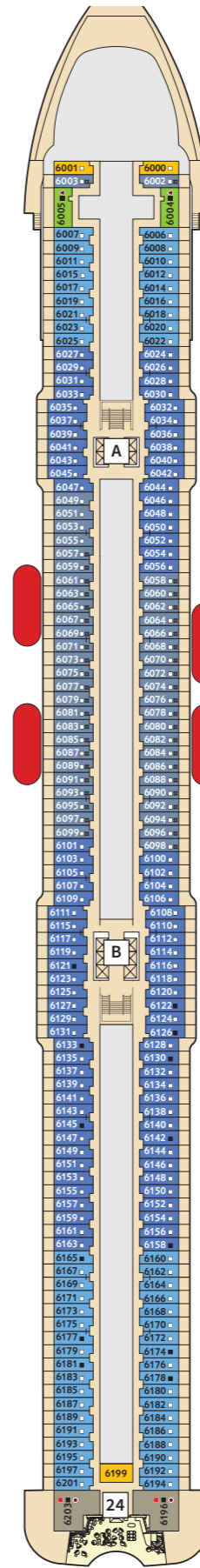
9 KORALLE



8 MUSCHEL



7 HANSE



6 BOJE

Cabin categories*

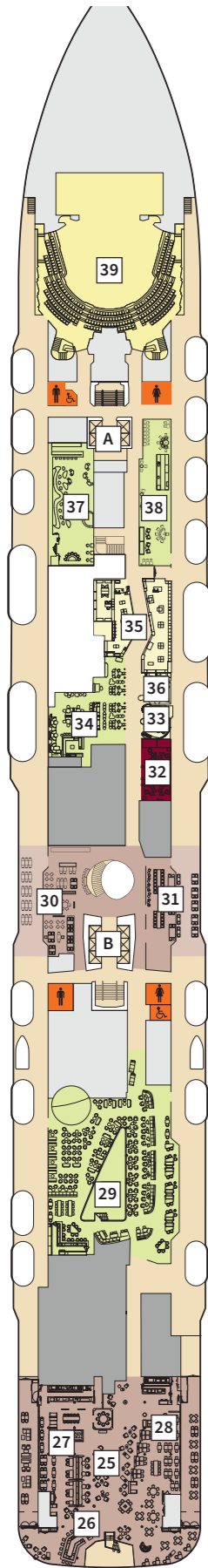
- 10157 Panorama Suite
- 10206 Schöne Aussicht Suite
- 8209 Horizont Suite
- 10015 Junior Suite
- 6004 Family Cabin Balcony
- 9000 Family Cabin Outside Cat. A
- 7000 Family Cabin Outside Cat. B
- 10000 Balcony Cabin Cat. A
- 9009 Balcony Cabin Cat. B
- 8009 Balcony Cabin Cat. C
- 7007 Balcony Cabin Cat. D
- 6007 Balcony Cabin Cat. E
- 6024 Balcony Cabin Cat. G
- 9007 Balcony Cabin Cat. H
- 8000 Outside Cabin Cat. A
- 10005 Inside Cabin Cat. A
- 8007 Inside Cabin Cat. B
- 10050 Inside Cabin Cat. C

Key

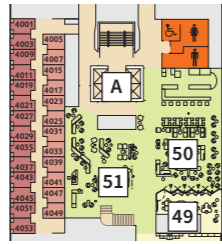
- Restaurant
- Bar
- SPA & Sport
- Entertainment/Theatre
- Operational rooms
- Kitchen
- Restricted view area due to rescue boats on deck 5
- Wheelchair-accessible cabin
- Connecting door
- Sofa bed
- Double sofa bed
- Additional bedroom with double bed
- Pullman bed (fold-out upper bed)
- Cabin with restricted view
- Beds cannot be separated
- Staircase
- Bridge
- Champagne Treff

*Sample display of the cabin numbers. Subject to change.

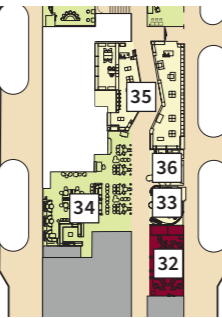
For **inside cabins** with even cabin numbers, the following applies: Doors open starboard (on the right, when ship is facing forward). If your inside cabin has an odd cabin number, the door opens portside (on the left, when ship is facing forward).



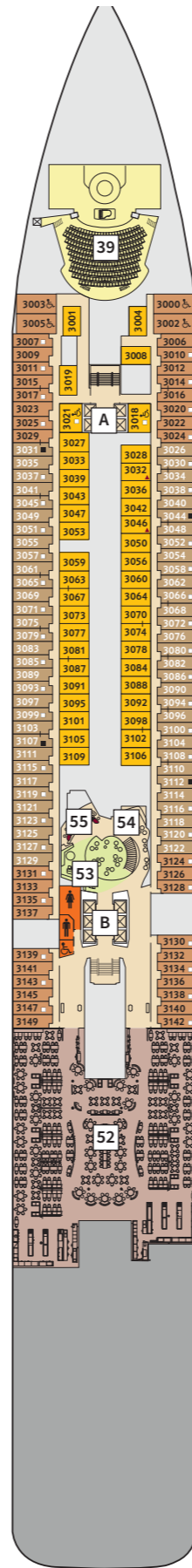
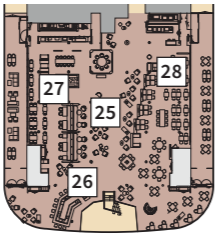
The new single cabins on **Mein Schiff 7** – a special place for single travellers to feel home



A new coffee house, the **Café Central**, on **Mein Schiff 7** serves as a cosy place with its lovely delicacies.



In **Hideki – Asian Delicacies** on **Mein Schiff 7** you can discover the culinary diversity of Asia.



Cabin categories*

- 3031 Outside Cabin Cat. A
- 4001 Outside Cabin Cat. B
- 3001 Inside Cabin Cat. C

Key

- Restaurant
- Bar
- SPA & Sport
- Entertainment/Theatre
- Operational rooms
- Kitchen
- Wheelchair-accessible cabin
- Connecting door
- Bunk bed
- Sofa bed
- Double sofa bed
- Additional bedroom with 2 beds
- 1 Pullman bed (fold-out upper bed)
- Cabin with restricted view
- Beds cannot be separated
- Mein Schiff® Premium inclusive benefits

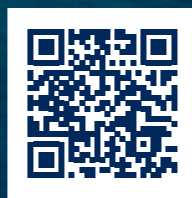
- A B Staircase
- 25 Große Freiheit – Exclusive Lounge
- 26 Diamant Bar
- 27 Hideki – Asian Delicacies
- 28 Surf & Turf – Steakhouse
- 29 Schau Bar
- 30 Ganz Schön Gesund – Bistro
- 31 Tag & Nacht – Bistro
- 32 Onboard Travel Management
- 33 Meine Reisewelt
- 34 Café Central
- 35 Neuer Wall – Shopping Arcades
- 36 Photo self-service
- 37 Abtanz Bar – Discotheque
- 38 Casino & Lounge
- 39 Theatre
- 40 La Spezia – Italian Eatery
- 41 Atlantik – Mediterranean Restaurant
- 42 Shore Excursions
- 43 TUI Bar
- 44 Hairdresser
- 45 Tattoo Studio
- 46 Sturmfrei – Teens Lounge / Spielplatz – Video Games
- 47 Conference rooms
- 48 Schaubühne – Concert Hall
- 49 Atelier
- 50 Gallery Bar
- 51 Gallery
- 52 Atlantik – Classic Restaurant
- 53 Saftwert – Juice Bar
- 54 Library
- 55 Reception
- 56 Hospital

*Sample display of the cabin numbers. Subject to change.
Casino gaming is not included in **Mein Schiff® Premium inclusive benefits.

For **inside cabins** with even cabin numbers, the following applies: Doors open starboard (on the right, when ship is facing forward). If your inside cabin has an odd cabin number, the door opens portside (on the left, when ship is facing forward).



You can find information on general terms and conditions at:
www.meinschiff.com/agb



Contents are printed on recycled paper that has been awarded the BLUE ANGEL German Eco Label and EU ECOLABEL.

Responsible for content:

TUI Cruises GmbH
Heidenkampsweg 58
20097 Hamburg, Germany
Tel.: +49 40 60001-5000

Email: info@tuicruises.com
Internet: www.meinschiff.com

Represented by the executive board
of TUI Cruises GmbH:
Wybcke Meier (chairperson),
Frank Kuhlmann

Registered headquarters: Hamburg, Germany
Commercial registry: Amtsgericht Hamburg, HRB 105222
Turnover revenue-ID: DE-259608001

General terms and conditions of business:
www.meinschiff.com/agb

Project management: Katharina Batteux
English version: Magdalena Neupauer
Consulting CD/CI: Antonia Navarrete-Thiede

Agency and implementation:
H4 Agentur für Markenentwicklung und Markenkommunikation
Translation by Tolingo GmbH

Advice and booking:

Field for stamp / address label
