



ATLAS

OCEAN VOYAGES®

---

WONDERS  
OF ANTARCTICA

NOVEMBER 2025 – MARCH 2026



UP TO 20%  
SAVINGS

BOOK BY DECEMBER 31

# INTIMATE YACHTING EXPEDITIONS™ EXPLORE MORE

Think of that moment when you arrive at a destination for the first time with the singular purpose of experiencing something new. Feel the flutter of anticipation that builds into wonder as you lay eyes on unfathomable beauty, set foot upon lands that few feet have touched, taste a delectable flavor you never knew existed, or meet someone whose passion for sharing their culture moves and enlightens you. These are the moments you experience on an expedition aboard an intimate yacht with Atlas Ocean Voyages®.



**2024 CONDÉ NAST TRAVELER  
HOT LIST WINNER – WORLD VOYAGER™  
READER'S CHOICE AWARD WINNER – EXPEDITION SHIPS**

---

**WORLD VOYAGER™ | WORLD TRAVELLER™ | WORLD NAVIGATOR®**  
100 STATEROOMS AND SUITES, FEWER THAN 200 GUESTS



TO BOOK, CALL YOUR PREFERRED TRAVEL ADVISOR OR OUR VOYAGE SPECIALISTS **1.844.249.8432**





## ALWAYS INCLUDED BY ATLAS

Every expedition with Atlas Ocean Voyages includes these complimentary amenities and more.

- Immersive cultural experience on board or ashore
- Gourmet dining with ever-changing menus
- Bars and lounges serving fine wines, spirits, craft beers and canapés
- Specialty coffees, fresh-pressed juices and afternoon tea service
- In-room coffee machine, stocked minibar and Vero Water
- 24-hour room service
- L'OCCITANE bath amenities
- Gratuities for onboard service staff
- Use of binoculars and walking sticks
- Butler service in suites
- Trip delay and medical evacuation coverage



## INCLUSIONS EXCLUSIVE TO POLAR EXPEDITIONS

- Private charter jet service with private group transfers
- 1-night pre-expedition hotel stay
- 1-night post-expedition hotel stay on select Antarctica expeditions
- Enrichment lectures and destination briefings
- Shore landings led by expert field guides
- Escorted sightseeing safaris by Zodiac
- Polar plunge
- Atlas Ocean Voyages parka, vest and water bottle
- Use of knee boots

# INSPIRING DAYS

Aboard our yachts, we cultivate an intimate ambiance that encourages connection with your fellow explorers, your expedition guides, yourself and your environment. Expedition talks and workshops from guest speakers, historians, photographers and other experts in their fields will fascinate your curious mind. Watch your destination grow closer sitting just 30 feet above the waterline at Water's Edge. Journey inward with a well-equipped Fitness Studio, running track on the top deck, relaxing sauna at SeaSpa by L'OCCITANE and other health and wellness amenities. Swap stories with fellow explorers while sipping on craft cocktails at Atlas Lounge. Or engage in lively conversation while gazing upon wondrous scenes from The Dome observation lounge with 270-degree and overhead views.



THE DOME





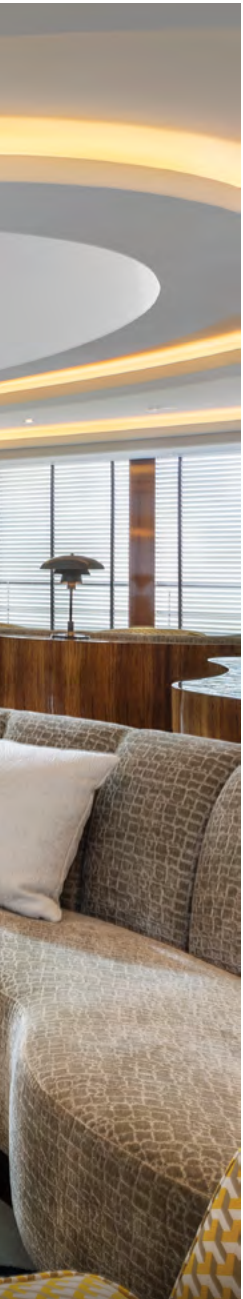
PAULA'S PANTRY

## LET US GET TO KNOW YOU

The officers, staff and crew aboard our intimate yachts share your love of travel. This is why we have chosen a life at sea, and this is why we are so passionate about creating an extraordinary experience for you. We know the joy of new discoveries, and this joy inspires our exceptional service and attention to every detail. As we travel together, we will naturally get to know one another, and thus the service we provide comes not from obligation but from genuine care and a sense of camaraderie.

## GLOBALLY INSPIRED CUISINE

Your culinary adventures on board rival your discoveries ashore, as our well-traveled chefs take inspiration from a wide array of global cuisines when creating their ever-changing menus. From a savory journey through regional dishes at the main restaurant or a leisurely afternoon tea in The Dome observation lounge, appreciate an experience that's more than cuisine.



# PURPOSE-BUILT YACHTS MADE FOR POLAR EXPEDITIONS

Classified as Polar Category C and Ice Class 1B, our yachts are made for experiencing polar regions to the max. With a hydro-jet propulsion system that allows us to cruise virtually silently, our yachts minimize underwater noise so as not to disturb marine life. We realize the possibilities of environmental stewardship with the latest hybrid power management and propulsion systems, maximizing fuel efficiency and consuming as low as one-fifth the fuel compared to conventional cruise-ship systems, reducing our impact on the environment.





# WORLD-CLASS EXPEDITION TEAM

Our expedition leaders and guest lecturers — experts in their fields — will guide and educate you through your polar expedition. From wilderness guides and naturalists to experts in marine biology and ornithology, as well as kayak and paddling guides and polar educators, your expedition team immerses you in your remote destinations, bringing you closer to extraordinary wildlife and landscapes while helping keep the environment pristine.





# ANTARCTICA

Navigating amid electric blue icebergs to a rocky shore where mountains clad in blindingly white snow rise into the clouds, you'll feel as if you're on another planet. Whether you're hiking a massive glacier alongside a colony of gentoo penguins or watching a humpback whale breach the surface just feet away on a Zodiac safari, there will be moments when the ethereal beauty of the Antarctic takes your breath away.







# ANTARCTICA'S WONDROUS WILDLIFE

Antarctica thrives with incredible wildlife. Below are the best times of the year to look for these awe-inspiring possible sights.

## NOVEMBER

- Antarctica's seabirds begin courting season at the end of the month
- King penguin females lay their eggs in South Georgia
- Fur seals display their mating rituals in South Georgia

## DECEMBER

- Watch for blue petrels as they guide your way along the Drake Passage
- Witness gentoo, Adélie and chinstrap penguins hatching
- Increased sightings of humpback whales near the Peninsula

## JANUARY

- Spot humpbacks while on a Zodiac safari
- Prime season to see penguin chicks in the Peninsula
- Search for Weddell seals as they lounge on an ice floe

## FEBRUARY

- Adult penguins begin molting and the chicks are actively learning to swim
- May see leopard seals hunting and molting
- Watch the penguin highways as the parents dive in and out of the water to feed their young at the beginning of the month

## MARCH

- Blue-eyed cormorants (or imperial shags) are fledging in the Peninsula
- Watch for minke, fin and other whales up close as they may come close to Zodiacs and kayaks
- Listen for the mating song of the leopard seals as they begin to court



## CAPTAIN'S CHOICE

Your Captain will expertly navigate ice floes, icebergs and changing sea and weather conditions to ensure you experience the most from your expedition. Each day is a new adventure filled with a spontaneous sense of exploration as your Captain works with our expedition team to determine possible shore landings and Zodiac safaris. All itinerary routes serve as examples and are subject to change based on current conditions, prioritizing the safety and optimal expedition experience for all guests.



# ATLAS ASHORE

Atlas Ocean Voyages takes great care to ensure you explore as far and wide as you wish, be it before, during or after your expedition.

## INCLUDED CULTURAL IMMERSIONS

---

### EXPLORING TIERRA DEL FUEGO NATIONAL PARK ON ALL EXPEDITIONS BEGINNING IN USHUAIA

Before embarking on your exhilarating expedition to Antarctica, marvel upon scenes of subantarctic Patagonia at the southernmost national park, also a UNESCO World Heritage Site. A panoramic coach tour takes you through scenic landscapes of spectacular lakes, glaciers, mountains, waterfalls and forests that inspire awe and wonder.

### A TRUE TASTE OF CHILE ON ALL EXPEDITIONS BEGINNING IN KING GEORGE ISLAND

Experience authentic Chilean culture on a pre-expedition immersion in Punta Arenas. Embark on a comfortable coach that will take you through picturesque scenes of Patagonia to a multi-course dinner at a local, ranch-style restaurant. Throughout your dinner experience, a beautiful combination of indigenous and European culture, colorful costumes, mesmerizing choreography and exciting music will inspire a sense of wonder.

## OPTIONAL LAND PROGRAMS

---

### EXPLORING IGUAZÚ FALLS PRE-EXPEDITION LAND PROGRAM

Immerse yourself in the spectacular scenery of the Iguazú Falls — one of the Seven Natural Wonders of the World and also a UNESCO World Heritage Site. Explore further on an exciting Zodiac safari around the cascades. Coming up close to the rushing waters of these magnificent waterfalls, a sense of reverence may overcome you. *Call for pricing.*

### HIGHLIGHTS OF BUENOS AIRES PRE- AND POST-EXPEDITION LAND PROGRAM

Discover the cultural highlights and local color of Buenos Aires led by a knowledgeable guide. Explore historical landmarks like the famous Casa Rosada and Recoleta Cemetery, where renowned figures of the past have been laid to rest, including Eva “Evita” Perón. The city’s neighborhoods, each with their own unique personality, beckon for you to uncover their rich history. Experience quintessential Buenos Aires with a dazzling evening at a tango show and delicious dinner. *Call for pricing.*



## INCLUDED EXPEDITION EXPERIENCES

---



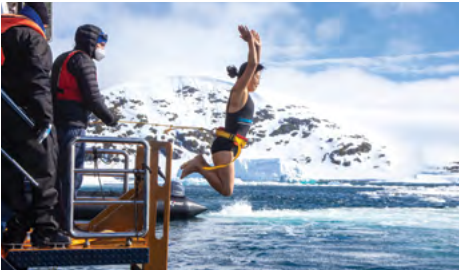
### ZODIAC SAFARIS

Get closer to your environment as you embark on one of the custom-made Zodiacs made for our yachts. While cruising the Antarctic coasts and communicating with the Captain, your expert expedition team will guide you through the continent's many wonders, pointing out marine wildlife along the way.



### EXPEDITION LANDINGS

Your expedition guides may lead you to dedicated high points and sightseeing locations for some of the best views. You may come across some of Antarctica's renowned wildlife, like a penguin colony filled with the whimsical birds as they go about their natural lives.



### POLAR PLUNGE

Connect with your wild side as you plunge into icy waters, much like the seals and penguins of Antarctica. With your fellow explorers cheering you on, it's easy to take on the challenge. And feel free to be a spectator as you cheer on your new friends while they take the plunge.

## OPTIONAL EXPEDITION EXPERIENCES

---



### KAYAKING

Alongside a kayak master, experienced kayakers have the opportunity to safely cruise through Antarctica's unspoiled waters, perhaps even coming close to penguins as they dive from ice floes into the sea. Look out for incredible moments, like the possibility of a whale breaching mere feet away from your kayak.

**\$200 PER GUEST PER OUTING**

### CAMPING

You could spend a night camping in Antarctica for a once-in-a-lifetime experience. Before settling in for the night, you have one last chance to grab a hot meal and shower on board. Once the Zodiac brings you back to shore, it's a truly wild experience as you and your fellow explorers fall asleep under the Midnight Sun.

**\$750 PER GUEST PER OUTING**

Included cultural immersions and all expedition experiences are subject to availability and may be changed or withdrawn at any time without notice. Requests for reservations may be made in advance, however, payments and reservation confirmations will be processed once you are on board the yacht. If you need to cancel your reservation, you may do so up to 72 hours prior to voyage departure to receive a full refund. Prices shown are subject to change any time without notice.



ADÉLIE PENGUINS

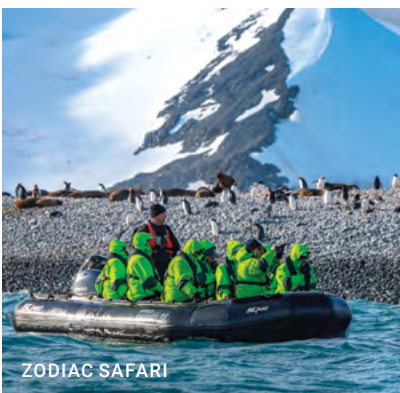


**POLAR EXPEDITION INCLUSIONS**

CULTURAL IMMERSION:  
EXPLORING TIERRA DEL FUEGO NATIONAL PARK

PRIVATE CHARTER JET SERVICE

1-NIGHT PRE-EXPEDITION HOTEL STAY IN BUENOS AIRES

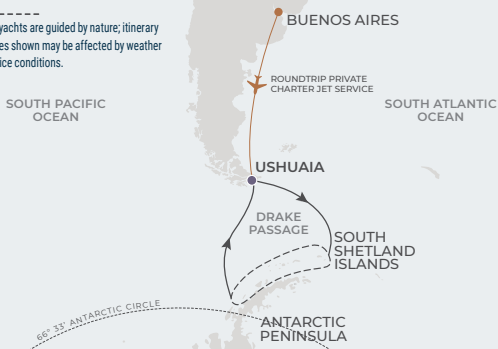


ZODIAC SAFARI

ANTARCTIC DISCOVERY  
**USHUAIA ROUNDTRIP**  
9 OR 10 NIGHTS

ANTARCTICA

Our yachts are guided by nature; itinerary routes shown may be affected by weather and ice conditions.



WORLD TRAVELLER™

2025: NOV 9 & NOV 29  
DEC 28 **HOLIDAY EXPEDITION**

2026: FEB 25

WORLD VOYAGER™

2026: JAN 5\*, JAN 15 & JAN 24  
FEB 27 | MAR 19

\*10-NIGHT EXPEDITION

DAY	PORT	ARRIVE	DEPART
Day 1	Ushuaia, Argentina	3 PM EMBARK	6 PM
Day 2	Drake Passage Navigation		
Day 3	Drake Passage Navigation		
Day 4	Exploring the South Shetland Islands 🗺️		
Days 5-7	Exploring the Antarctic Peninsula 🗺️		
Day 8	Drake Passage Navigation		
Day 9	Drake Passage Navigation		
Day 10	Ushuaia, Argentina	8 AM DEBARK	

EXPEDITION HIGHLIGHT

The seabird courting season begins in November in the Antarctic Peninsula. Look out for chinstrap and Adélie penguins as they begin nesting and breeding. Celebrate like never before amid a winter wonderland on holiday expeditions.

— UP TO 20% BONUS SAVINGS —  
BEST AVAILABLE FARE FROM \$9,044 PER GUEST

Fares are subject to change without notice. Additional savings and government taxes and fees of \$450-\$500 are included in the per guest fares shown.

🗺️ CAPTAIN'S CHOICE see page 7





TIERRA DEL FUEGO



**POLAR EXPEDITION INCLUSIONS**

CULTURAL IMMERSION:  
EXPLORING TIERRA DEL FUEGO  
NATIONAL PARK

PRIVATE CHARTER JET SERVICE

1-NIGHT PRE-EXPEDITION  
HOTEL STAY IN BUENOS AIRES



HUMPBACK WHALE

EXPLORING THE LAST CONTINENT  
**USHUAIA ROUNDTRIP**  
10 OR 11 NIGHTS

**ANTARCTICA**

Our yachts are guided by nature; itinerary routes shown may be affected by weather and ice conditions.



**WORLD VOYAGER™**

2025: NOV 14

**WORLD TRAVELLER™**

2025: NOV 18 **HOLIDAY EXPEDITION**

2026: JAN 6\*

**WORLD NAVIGATOR®**

2025: NOV 20 **HOLIDAY EXPEDITION**  
DEC 1

\*10-NIGHT EXPEDITION

DAY	PORT	ARRIVE	DEPART
Day 1	Ushuaia, Argentina	3 PM EMBARK	6 PM
Day 2	Drake Passage Navigation		
Day 3	Drake Passage Navigation		
Days 4-7	Exploring the Antarctic Peninsula 🇦🇷		
Days 8-9	Exploring the South Shetland Islands 🇧🇸		
Day 10	Drake Passage Navigation		
Day 11	Drake Passage Navigation		
Day 12	Ushuaia, Argentina	8 AM DEBARK	

**EXPEDITION HIGHLIGHT**

As our intimate yacht navigates icebergs, purpose-built for minimal sound so as not to disturb marine life, one of your expedition team guides may call out a humpback whale breach sighting.

**— UP TO 10% BONUS SAVINGS —**  
BEST AVAILABLE FARE FROM **\$9,954** PER GUEST

Fares are subject to change without notice. Additional savings and government taxes and fees of \$500-\$550 are included in the per guest fares shown.



ORCA



**POLAR EXPEDITION INCLUSIONS**

CULTURAL IMMERSION:  
EXPLORING TIERRA DEL FUEGO NATIONAL PARK

PRIVATE CHARTER JET SERVICE

1-NIGHT PRE-EXPEDITION HOTEL STAY IN BUENOS AIRES & 1-NIGHT POST-EXPEDITION HOTEL STAY IN PUNTA ARENAS



CHINSTRAP PENGUINS

**WORLD VOYAGER™**

2025: NOV 25 HOLIDAY EXPEDITION

**EXPEDITION HIGHLIGHT**

As you conquer the famous Drake Passage at the beginning of your journey, you may celebrate with a special Thanksgiving dinner.

Then, after maximum adventure in minimum time, fly back in the comfort of private charter jet service, included with our compliments.

**DRAKE FLY & SAIL  
USHUAIA TO  
KING GEORGE ISLAND  
7 NIGHTS**

**ANTARCTICA**

Our yachts are guided by nature; itinerary routes shown may be affected by weather and ice conditions.



DAY	PORT	ARRIVE	DEPART
Nov 25	Ushuaia, Argentina	3 PM EMBARK	6 PM
Nov 26	Drake Passage Navigation		
Nov 27	Drake Passage Navigation		
Nov 28-30	Exploring the Antarctic Peninsula 🇦🇷		
Dec 1	Exploring the South Shetland Islands 🇧🇪		
Dec 2	King George Island, South Shetland Islands	8 AM DEBARK	

**BEST AVAILABLE FARE FROM \$8,999 PER GUEST**

Fares are subject to change without notice. Government taxes and fees of \$350 are included in the per guest fares shown.

👤 CAPTAIN'S CHOICE see page 7



EXPLORING THE ANTARCTIC PENINSULA





EXPEDITION LANDING



**POLAR EXPEDITION INCLUSIONS**

CULTURAL IMMERSION:  
A TRUE TASTE OF CHILE

PRIVATE CHARTER JET SERVICE

1-NIGHT PRE-EXPEDITION  
HOTEL STAY IN PUNTA ARENAS &  
1-NIGHT POST-EXPEDITION HOTEL  
STAY IN PUNTA ARENAS



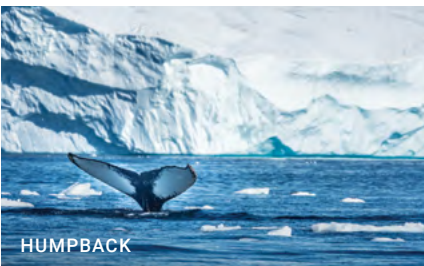
ZODIAC SAFARI

**WORLD VOYAGER™**

2025: DEC 2 & DEC 9

**EXPEDITION HIGHLIGHT**

Enjoy more time spent with your boots on the ground, exploring the Antarctic Peninsula, bypassing the Drake Passage at the beginning and end of your journey. December sees an increase in sightings of humpback whales amid the Peninsula.

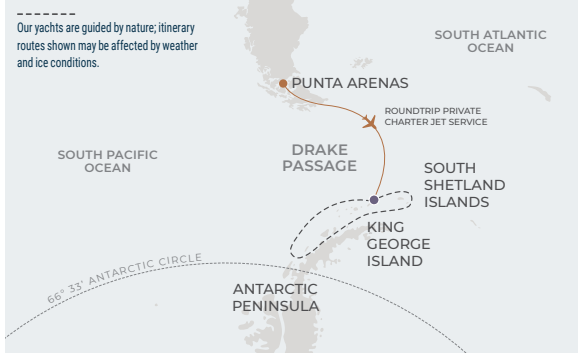


HUMPBACK

**DRAKE EXPRESS  
KING GEORGE ISLAND  
ROUNDTRIP  
7 NIGHTS**

**ANTARCTICA**

Our yachts are guided by nature; itinerary routes shown may be affected by weather and ice conditions.



DAY	PORT	ARRIVE	DEPART
Day 1	King George Island, South Shetland Islands	3 PM EMBARK	6 PM
Day 2	At Sea		
Days 3-6	Exploring the Antarctic Peninsula 📡		
Day 7	Exploring the South Shetland Islands 📡		
Day 8	King George Island, South Shetland Islands	8 AM DEBARK	

**— UP TO 10% BONUS SAVINGS —**  
BEST AVAILABLE FARE FROM **\$11,734** PER GUEST

Fares are subject to change without notice. Additional savings and government taxes and fees of \$350 are included in the per guest fares shown.

📡 CAPTAIN'S CHOICE see page 7



GENTOO PENGUINS



EXPEDITION LANDING



**POLAR EXPEDITION INCLUSIONS**

CULTURAL IMMERSION:  
EXPLORING TIERRA DEL FUEGO  
NATIONAL PARK

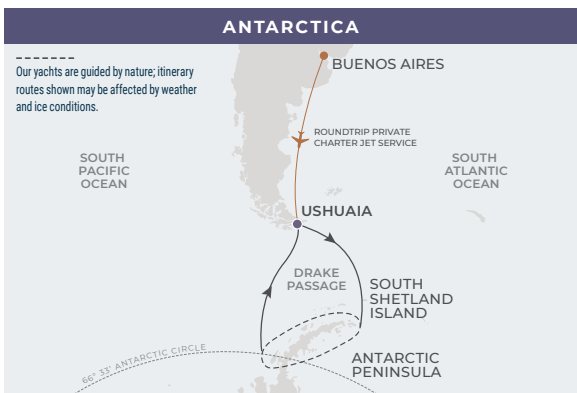
PRIVATE CHARTER JET SERVICE

1-NIGHT PRE-EXPEDITION  
HOTEL STAY IN BUENOS AIRES



ZODIAC SAFARI

CROSSING THE ANTARCTIC CIRCLE  
**USHUAIA ROUNDTRIP**  
11 OR 13 NIGHTS



**WORLD TRAVELLER™**

2025: DEC 17 **HOLIDAY EXPEDITION**

2026: FEB 14 | MAR 6\*

---

**WORLD NAVIGATOR®**

2025: DEC 28 **HOLIDAY EXPEDITION**

2026: FEB 20

---

**WORLD VOYAGER™**

2026: MAR 8

\*13-NIGHT EXPEDITION

DAY	PORT	ARRIVE	DEPART
Day 1	Ushuaia, Argentina	3 PM EMBARK	6 PM
Day 2	Drake Passage Navigation		
Day 3	Drake Passage Navigation		
Day 4	Crossing the Antarctic Circle*		
Days 5-7	Exploring the Antarctic Peninsula 🧭		
Days 8-9	Exploring the South Shetland Islands 🧭		
Day 10	Drake Passage Navigation		
Day 11	Drake Passage Navigation		
Day 12	Ushuaia, Argentina	8 AM DEBARK	

**EXPEDITION HIGHLIGHT**

Join the Order of the Red Nose, a feat that few explorers who came before can claim, as you cross the 66th southern parallel. Eight days of exploring the Antarctic Peninsula gives you the chance to dive deep into these breathtaking landscapes.

**— UP TO 20% EARLY BOOKING SAVINGS —**  
BEST AVAILABLE FARE FROM **\$10,909** PER GUEST

Fares are subject to change without notice. Additional savings and government taxes and fees of \$550-\$650 are included in the per guest fares shown.

🧭 CAPTAIN'S CHOICE see page 7

\*The Antarctic Circle Crossing may be attempted on a different date during the expedition than indicated on the itinerary due to changing conditions. Expeditions at certain times of the season are not guaranteed to cross the circle as they depend on weather and ice conditions that may limit the ability to navigate that far south.





KING PENGUIN CHICKS



**POLAR EXPEDITION INCLUSIONS**

CULTURAL IMMERSION:  
EXPLORING TIERRA DEL FUEGO NATIONAL PARK

PRIVATE CHARTER JET SERVICE

1-NIGHT PRE-EXPEDITION HOTEL STAY IN BUENOS AIRES



WEDDELL SEAL

**WORLD NAVIGATOR®**

2026: FEB 6

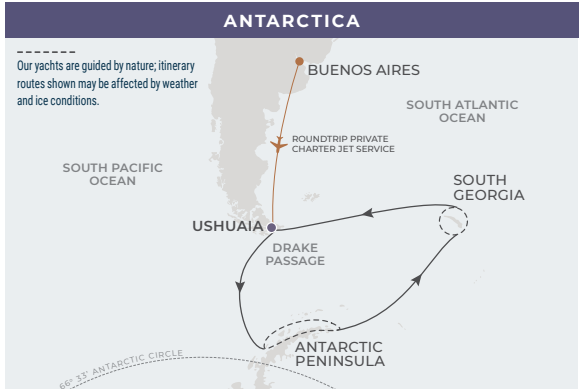
**WORLD VOYAGER™**

2026: FEB 13

**EXPEDITION HIGHLIGHT**

Witness the wonder of Gentoo, chinstrap and Adélie penguins waddling amid the rocky terrain of South Georgia. Perhaps the most endearing among these are the King penguin chicks in all their downy glory.

**ANTARCTIC ADVENTURER  
USHUAIA ROUNDTRIP  
14 NIGHTS**



DAY	PORT	ARRIVE	DEPART
Day 1	Ushuaia, Argentina	3 PM EMBARK	6 PM
Day 2	Drake Passage Navigation		
Day 3	Drake Passage Navigation		
Days 4–6	Exploring the Antarctic Peninsula 🇮🇸		
Days 7–8	At Sea		
Days 9–11	Exploring the South Georgia 🇮🇸		
Days 12–14	At Sea		
Day 15	Ushuaia, Argentina	8 AM DEBARK	

**— UP TO 10% EARLY BOOKING SAVINGS —**  
BEST AVAILABLE FARE FROM **\$14,469** PER GUEST

Fares are subject to change without notice. Additional savings and government taxes and fees of \$700 are included in the per guest fares shown.

🇮🇸 CAPTAIN'S CHOICE see page 7

# ANTARCTIC GRAND EXPEDITIONS

## ESCAPE INTO A WINTER WONDERLAND

Take the ultimate holiday journey, delving deep into Antarctica, South Georgia and Port Stanley in the Falkland Islands. Celebrate the magic of the holidays at the ends of the Earth for a truly magnificent, unforgettable experience.



ADÉLIE PENGUINS



KING PENGUINS



GENTOO PENGUINS

### SOUTH GEORGIA

The most mesmerizing sight is that of the King penguins, large colonies as far as the eye can see. The fully matured ones stand regal over their brethren while endearing chicks are covered in their downy feather glory.

### PORT STANLEY

You may have an opportunity for an exciting 4x4 adventure to greet the Gentoo penguins of Newans Station.



HUMPBACK WHALE

### ANTARCTIC PENINSULA

Witness the wonder of penguin chicks hatching toward the end of the month and increased sightings of humpback whales.





## POLAR EXPEDITION INCLUSIONS

CULTURAL IMMERSION:  
EXPLORING TIERRA DEL FUEGO  
NATIONAL PARK

PRIVATE CHARTER JET SERVICE

1-NIGHT PRE-EXPEDITION  
HOTEL STAY IN BUENOS AIRES



EXPEDITION LANDING

## WORLD NAVIGATOR®

2025: DEC 12 HOLIDAY EXPEDITION

## EXPEDITION HIGHLIGHT

Imagine setting foot on the ethereal landscape of the Antarctic Sound, where the whispers of ancient glaciers echo. It's a land of stark contrasts, known for tabular icebergs, stunning blue waters and abundant wildlife.

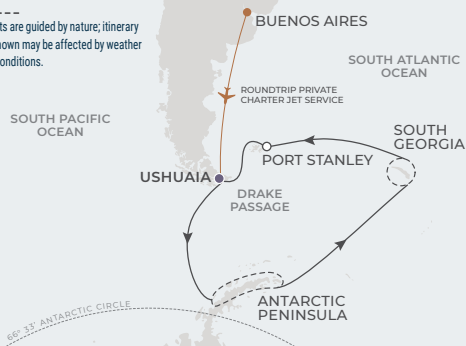


KAYAKING EXCURSION

# GRAND ANTARCTIC HOLIDAY USHUAIA ROUNDTRIP 16 NIGHTS

## ANTARCTICA

Our yachts are guided by nature; itinerary routes shown may be affected by weather and ice conditions.



DAY	PORT	ARRIVE	DEPART
Dec 12	Ushuaia, Argentina	3 PM EMBARK	6 PM
Dec 13	Drake Passage Navigation		
Dec 14	Drake Passage Navigation		
Dec 15	Exploring the Antarctic Sound 🗺️		
Dec 16-18	Exploring the Antarctic Peninsula 🗺️		
Dec 19-20	At Sea		
Dec 21-23	Exploring South Georgia 🗺️		
Dec 24-25	At Sea		
Dec 26	Port Stanley, Falkland Islands	8 AM	5 PM
Dec 27	At Sea		
Dec 28	Ushuaia, Argentina	8 AM DEBARK	

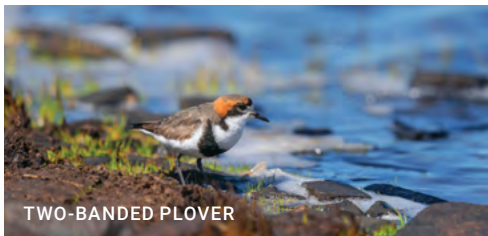
— 10% BONUS SAVINGS —  
BEST AVAILABLE FARE FROM \$17,179 PER GUEST

Fares are subject to change without notice. Additional savings and government taxes and fees of \$700 are included in the per guest fares shown.

🗺️ CAPTAIN'S CHOICE see page 7

## EXPLORER'S CELEBRATION

Experience the gift of adventure this holiday as you come upon scenes of pristine icebergs, glaciers and ice floes. Feel a sense of warmth and camaraderie as you connect with your fellow explorers at Water's Edge, situated just 30 feet above the sea's surface, watching for humpback whales breaching while enjoying a cup of hot cocoa and heated seating.



TWO-BANDED PLOVER



KING PENGUINS

### PORT STANLEY

Alongside an expert guide, the Falkland Islands' natural wonders are revealed with a bird watching excursion. Keep an eye out for Magellanic snipe, two-banded plovers and more avian wonders.

### SOUTH GEORGIA

Enter the empire of the regal king penguin, standing tall above his brethren amid fields of tussock grass and rugged cliffs, becoming part of their world if only for a moment.





## POLAR EXPEDITION INCLUSIONS

CULTURAL IMMERSION:  
EXPLORING TIERRA DEL FUEGO  
NATIONAL PARK

PRIVATE CHARTER JET SERVICE

1-NIGHT PRE-EXPEDITION  
HOTEL STAY IN BUENOS AIRES



RING IN THE NEW YEAR ON BOARD

## WORLD VOYAGER™

2025: DEC 18 HOLIDAY EXPEDITION

## FESTIVE EXPLORATIONS

Raise a glass to the New Year  
as you celebrate the spirit of  
adventure with fellow explorers.

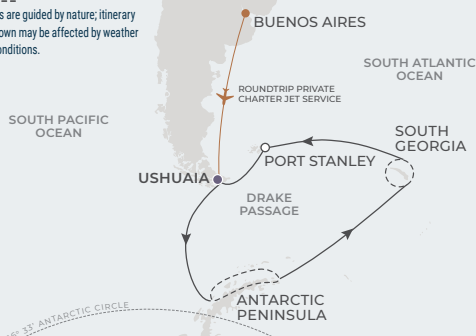


CHINSTRAP PENGUINS

# GRAND ANTARCTIC HOLIDAY USHUAIA ROUNDTRIP 18 NIGHTS

## ANTARCTICA

Our yachts are guided by nature; itinerary routes shown may be affected by weather and ice conditions.



DAY	PORT	ARRIVE	DEPART
Dec 18	Ushuaia, Argentina	3 PM EMBARK	6 PM
Dec 19	Drake Passage Navigation		
Dec 20	Drake Passage Navigation		
Dec 21–24	Exploring the Antarctic Peninsula 📍		
Dec 25–27	At Sea		
Dec 28–31	Exploring South Georgia 📍		
Jan 1–2	At Sea		
Jan 3	Port Stanley, Falkland Islands	9 AM	6 PM
Jan 4	At Sea		
Jan 5	Ushuaia, Argentina	8 AM DEBARK	

### — 10% BONUS SAVINGS —

BEST AVAILABLE FARE FROM **\$18,989** PER GUEST

Fares are subject to change without notice. Additional savings and government taxes and fees of \$900 are included in the per guest fares shown.

📍 CAPTAIN'S CHOICE see page 7

# ANTARCTIC GRAND EXPEDITIONS

## TOTAL IMMERSIONS IN THE FINAL CONTINENT

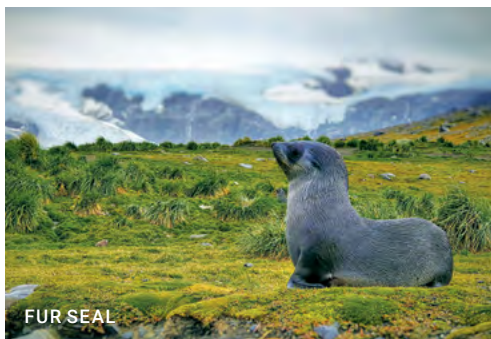
Take the ultimate journey, delving deep into Antarctica, South Georgia and Port Stanley in the Falkland Islands. This expedition sets a course for wildlife lovers, with awe-inspiring animals.



KING PENGUINS



HUMPBACK WHALE



FUR SEAL

### ANTARCTIC PENINSULA

Witness the wonder of penguin chicks being fed by their parents, and the migration of humpback whales during this month.

### WILD WONDERS

From fur seals to chinstrap and Gentoo penguins, there is no shortage of incredible fauna as you traverse from icy tundra to fields of tussock grass.



GENTOO PENGUINS

### NEWANS STATION

After an exciting 4x4 adventure from Port Stanley, the approximately 200 breeding pairs of Gentoo penguins will greet you enthusiastically.





## POLAR EXPEDITION INCLUSIONS

CULTURAL IMMERSION:  
EXPLORING TIERRA DEL FUEGO  
NATIONAL PARK

PRIVATE CHARTER JET SERVICE

1-NIGHT PRE-EXPEDITION  
HOTEL STAY IN BUENOS AIRES



ZODIAC SAFARI

WORLD NAVIGATOR®

2026: JAN 8

## EXPEDITION HIGHLIGHT

King penguins in all stages of their life cycle can be found aplenty amid the shores of South Georgia. Enter their realm for a moment alongside your expedition guides, finding a connection with these regal birds.

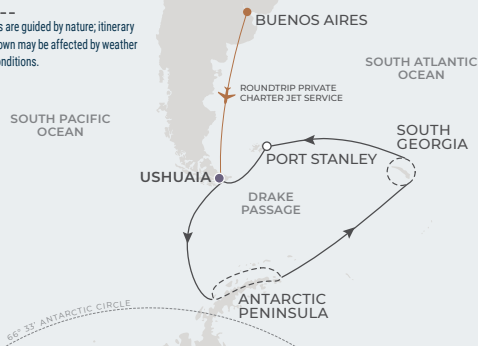


MACARONI PENGUIN

# GRAND ANTARCTICA USHUAIA ROUNDTRIP 18 NIGHTS

## ANTARCTICA

Our yachts are guided by nature; itinerary routes shown may be affected by weather and ice conditions.



DAY	PORT	ARRIVE	DEPART
Jan 8	Ushuaia, Argentina	3 PM EMBARK	6 PM
Jan 9	Drake Passage Navigation		
Jan 10	Drake Passage Navigation		
Jan 11-14	Exploring the Antarctic Peninsula 📍		
Jan 15-17	At Sea		
Jan 18-21	Exploring South Georgia 📍		
Jan 22-23	At Sea		
Jan 24	Port Stanley, Falkland Islands	9 AM	6 PM
Jan 25	At Sea		
Jan 26	Ushuaia, Argentina	8 AM DEBARK	

— 10% EARLY BOOKING SAVINGS —  
BEST AVAILABLE FARE FROM **\$18,989** PER GUEST

Fares are subject to change without notice. Additional savings and government taxes and fees of \$900 are included in the per guest fares shown.

📍 CAPTAIN'S CHOICE see page 7

# INCREDIBLE OFFERS JUST FOR YOU

## **UP TO 20% BONUS SAVINGS ON SELECT EXPEDITIONS**

Epic explorations of Antarctica on polar expeditions. Stargazing alongside a resident astronomer on cultural expeditions through the Scottish highlands and Norway. Culinary and wine adventures in the Mediterranean on epicurean expeditions. The time to book these life-changing adventures with incredible savings is now.

## **BOOK EARLY, SAVE THE MOST. UP TO 30% ON SELECT EXPEDITIONS**

Choose your preferred suite or stateroom and get the **BEST SAVINGS** — up to 30% on select 2026 expeditions — by booking early. Whether you wish to traverse the farthest reaches in Antarctica or the High Arctic on a Polar Expedition, the best way to save on these adventures is to book early.

**BOOK BY DECEMBER 31 BEFORE FARES INCREASE.**





# EXPEDITIONS FOR EVERY SEASON

With Atlas Ocean Voyages®, there's an adventure for every explorer all year-round to explore from pole to pole. For the intrepid explorer who thrives on a challenge, our Polar Expeditions come closer to the most remote corners of the world, including more expeditions to the High Arctic of Svalbard and Greenland, Antarctica and Patagonia and the Falklands. For explorers passionate about art, architecture, folklore and connecting with local communities, our Cultural Expeditions take you to captivating corners of South America, the Caribbean and Northern Europe, as well as on Transoceanic expeditions. For the culinary connoisseurs who want to indulge in fine wine and cuisine, we offer Epicurean Expeditions in the Mediterranean. There's more than one way to explore the world.

## — EXCLUSIVELY INCLUDED —



### **POLAR EXPEDITIONS**

- Private charter jet service with private group transfers
- Shore landings led by expert field guides
- Escorted sightseeing safaris by Zodiac
- Polar plunge
- Atlas Ocean Voyages parka, vest and water bottle



### **EPICUREAN EXPEDITIONS**

- Culinary presentations and wine tastings by Gastronomic Guests or Visiting Vintners
- Cooking demonstrations and cuisine tastings
- Atlas Ocean Voyages backpack and water bottle



### **CULTURAL EXPEDITIONS**

- Enrichment programs and workshops on select expeditions
- Authentic local experiences and onboard events hosted by Cultural Experts and Storytellers on
- Atlas Ocean Voyages backpack and water bottle

# YOUR PRIVATE HAVEN

After an inspiring day of exploring, the luxurious comfort of your suite or stateroom offers the perfect place to unwind and relax. All accommodations include plush bedding and a spacious living room or sitting area. Take in a final view of the seascape from the comfort of your balcony or from your panoramic window before retiring for the evening.



JOURNEY SUITE | WORLD NAVIGATOR

## ALL ACCOMMODATIONS INCLUDE

- Stocked in-room minibar
- 24-hour room service including spirits, wine and beer
- Nespresso Coffee and Kusmi Teas
- Still and sparkling water in reusable glass bottles
- Private marble spa bath with luxurious L'OCCITANE amenities
- Walk-in mosaic glass shower with rain head and body jets
- Plush terry bathrobes and slippers
- Queen bed with sumptuous Portuguese cotton linens by Lameirinho
- Option to convert queen bed into two singles
- Spacious wardrobe
- Wall-mounted television with infotainment system
- Complimentary use of binoculars

### PLUS, SUITE EXTRAS:

- Butler service
- Expanded room service menu
- Double sinks and tub in Navigator Suites



## SUITE ACCOMMODATIONS

NAVIGATOR | DISCOVERY | JOURNEY

### INCLUDES BUTLER SERVICE AND EXPANDED ROOM SERVICE MENU

- 1-Bedroom Suite with Oversized Private Balcony
- Elegant private marble bath featuring L'OCCITANE amenities
- Walk-in mosaic glass shower with rain head and body jets
- Walk-in closet and wardrobe
- Living room with sofa and vanity
- Stocked in-room minibar
- Includes 2 wall-mounted TVs with "infotainment" system



NAVIGATOR (NS) 465 sq. ft.



DISCOVERY (DS) 445 sq. ft.



JOURNEY (JS) 382 sq. ft.

## BALCONY & OCEANVIEW STATEROOM ACCOMMODATIONS

HORIZON DELUXE | VERANDA DELUXE | HORIZON | VERANDA | ADVENTURE OCEANVIEW

- Queen Bed
- Elegant private marble bath featuring L'OCCITANE amenities
- Walk-in mosaic glass shower with rain head and body jets
- Wardrobe
- Stocked in-room minibar
- "Infotainment" system



HORIZON DELUXE (E1) 300 sq. ft.



VERANDA DELUXE (E2) 300 sq. ft.



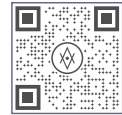
HORIZON (A1/A2) 270 sq. ft.



VERANDA (B1/B2) 270 sq. ft.



ADVENTURE OCEANVIEW (AO) 183 sq. ft.



SCAN HERE FOR  
ACCOMMODATIONS DETAILS

Horizon and Horizon Deluxe Staterooms include a Juliette balcony.  
Veranda and Veranda Deluxe Staterooms include a private balcony.  
Adventure Oceanview Staterooms include a panoramic picture window.

Suite and Stateroom measurements are approximate.  
Suite and Stateroom furnishings vary by yacht and may be different than as depicted in photographs.

Itineraries are at the discretion of Atlas Ocean Voyages and may be modified up to and during the expedition. FREE Cultural Immersion events, Gastronomic Guests and Guest Speakers may be changed at any time without notice. Images are only a representation of possible expedition experiences. Travelers may require a visa for travel. Additional restrictions may apply. For full terms and conditions, contact your preferred Travel Advisor or Atlas Ocean Voyages®. ©2024 Atlas Ocean Voyages. Ships' Registry: Portugal | MKT\_3787\_11.07.24



# ATLAS

OCEAN VOYAGES®



UP TO 20%  
**SAVINGS**

**BOOK BY DECEMBER 31**

TO BOOK, CALL YOUR PREFERRED TRAVEL ADVISOR  
OR OUR VOYAGE SPECIALISTS **1.844.249.8432**

**ATLASOCEANVOYAGES.COM**