



# LE COMMANDANT CHARCOT

ANTARCTIC  
WINTER 2025-2026



## “Sincerity and sharing of emotion”

Hervé Gastinel, President of PONANT, decided he would like to give one of our guests, Antoine de Pérignon, a chance to talk about his passion for exploring Antarctica aboard *Le Commandant Charcot*.



Antoine de Pérignon

“I fell in love with *Le Commandant Charcot* while on a Greenland cruise. The word ‘exploration’ is particularly appropriate. You know from the outset that you’re embarking on an extraordinary adventure, led by a team of experts. The captains convey an infectious enthusiasm; their announcements are fabulous in their sincerity and sharing of emotion. The nature guides are passionate about their work, and the chance to meet them and see a vast array of wildlife combines to create an unforgettable trip.

My first semi-circumnavigation of Antarctica was incredible. My best memory? In the Bellingshausen Sea, after two hours of sailing, a polynya suddenly appeared, a sort of lake in the middle of the sea of ice. It was 11pm, the sky was golden and so was the sea... However, as an amateur photographer, my favourite encounters are with animals. Thanks to our daily trips, for example, we were able to observe the different stages of development of Adélie penguin chicks. A whole cycle that the length of the trip - 28 days - allowed us to appreciate.

The programme is packed with activities, conferences and discoveries, but there’s also quiet time to think and to take photos. Every area of the ship is designed to make you feel at home, in direct contact with the outside world. You can, as I did, watch the Ross Barrier from the gourmet restaurant, the Blue Lagoon, or even the sauna. You might even find yourself alone in the evening, in the observatory lounge, enveloped by the captivating light of the landscape.

At the end of my voyage, I experienced what ship enthusiasts call the “Charcot blues”. Anyone who has ever travelled to Antarctica aboard *Le Commandant Charcot* will confirm the resulting enthusiasm, which goes hand in hand with curiosity, awareness and an irrepressible desire to set sail again.”

*Antoine de Pérignon*

Passenger in January 2024 on the cruise  
Between two continents, unexplored lands of Antarctica

# BEYOND EXPLORATION

Five experiences that only *Le Commandant Charcot* offers you in Antarctica

# 1

## REACHING THE UNREACHABLE

The only passenger ship in the world with a **Polar Class 2 (PC2)** hull, *Le Commandant Charcot* can navigate in multi-year ice for much of the year. All you have to do is let the **immersive itineraries** captivate you, from the Weddell Sea to the South Pacific Ocean, via the Bellingshausen, Amundsen and Ross seas. In the middle of winter, two semi-circumnavigations, each lasting almost a month, take you along the White Continent.

# 2

## EXPERTISE AND IMMERSION

With you are around 20 **naturalist guides**, true experts of the region, who explain the history of Antarctica, the landforms, the fauna and flora. The crew on the bridge are experienced in sailing through ice and are ready to answer your questions.

Kayaking, polar trekking on foot or with snowshoes, polar diving without the need for a wet/dry suit, landing on the ice: experience a **connection with the powerful nature** of Antarctica.

To immortalise these unique moments, the **Photo Ambassadors** on board offer lectures and practical workshops throughout the voyage.



## INSIDE - OUTSIDE, THE INVISIBLE FRONTIER

On board, the 123 staterooms and communal areas are designed as **cocoons that open wide to the grandiose scenery** and extreme environments around them. The Blue Lagoon - an open-air lagoon heated using energy recovery -, the indoor swimming pool, the snow cabin, detox bar in the spa and the Cigar lounge are some of the unique spaces offered by *Le Commandant Charcot* within our fleet (see pages 20 to 25).

## THE ONLY ALAIN DUCASSE RESTAURANT AT SEA

*Nuna* (meaning 'Earth' in Inuit) offers a gourmet menu devised by Michelin-starred chef Alain Ducasse, as well as some of his signature dishes. Delicate flavours are combined with refined tableware to achieve an **unparalleled level of excellence** in such isolated surroundings.

## MORE RESPECTFUL AND COMMITTED NAVIGATION

*Le Commandant Charcot* uses the **most advanced technologies** and is Green Globe certified, the internationally recognised benchmark for more sustainable tourism. The aim is to reduce the ship's environmental footprint as much as possible in the regions it visits, by combining electric propulsion and liquefied natural gas.

Equipped with **two research laboratories**, in 2024 *Le Commandant Charcot* took on board more than 80 scientists working for more than 20 research institutes, including the CNRS and GEOMAR.



Polar expedition



Boots on loan



Parka gift

# THE POLAR ODYSSEY






**STARTS  
HERE**

## ITINERARY

# The emperor penguins of Weddell Sea

Ushuaia • Ushuaia

14 days/12 nights on board | 30th October, 11th and 23rd November 2025

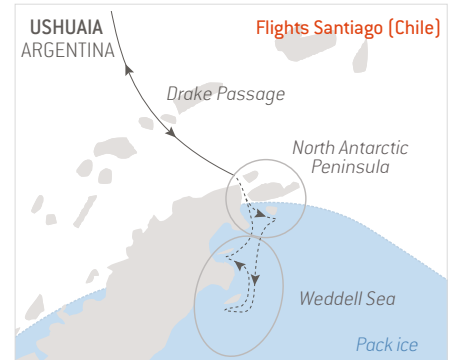
16 days/14 nights on board | 19th December 2025\* 

€2,500 FLIGHT CREDIT OFFERED <sup>(1)</sup>

FREE SINGLE SUPPLEMENT <sup>(2)</sup>

Not readily accessible, the Weddell Sea stretches out in a frozen silence where titanic icebergs and infinite ice floes draw a landscape of raw beauty. Perhaps, in this preserved place, you will be able to see the majestic emperor penguins and their young chicks.

*\*the passage through the Larsen Ice Shelves.*





## HIGHLIGHTS

- The possibility of spotting the iconic emperor penguins.
- The surrounding wildlife: Adélie, chinstrap and gentoo penguins; Weddell, leopard and crabeater seals; humpback and orcas.
- Landscapes: immense glaciers, table top icebergs, immersion in the heart of the ice floes.
- Departure 11th November: the presence of **Nicolas Vincent**, Endurance 22's Expedition Sub-Sea Manager.
- Departure 23rd November: the presence of **Donna Urquhart**, Australian ultramarathon runner, pain scientist and physiotherapist.

---

**From €25,500** <sup>(3)</sup>

Included with your cruise <sup>(4)</sup>:  
return flights Santiago/Ushuaia,  
the night in Santiago before embarkation and transfers.



# THE SENTINEL OF ANTARCTICA

The only animal species capable of spending the entire year in Antarctica, the emperor penguin is often presented as a symbol of the White Continent. Zoom in on its extraordinary abilities, made possible by the perfect match between its environment, its anatomy and its behaviour.



## AQUATIC FEATS

Emperor penguins are spectacular marine predators, capable of diving to depths of up to 500 metres and remaining underwater for up to 30 minutes. They use their wings as fins and their feet and tail as a rudder.

## SURVIVAL CHAMPION

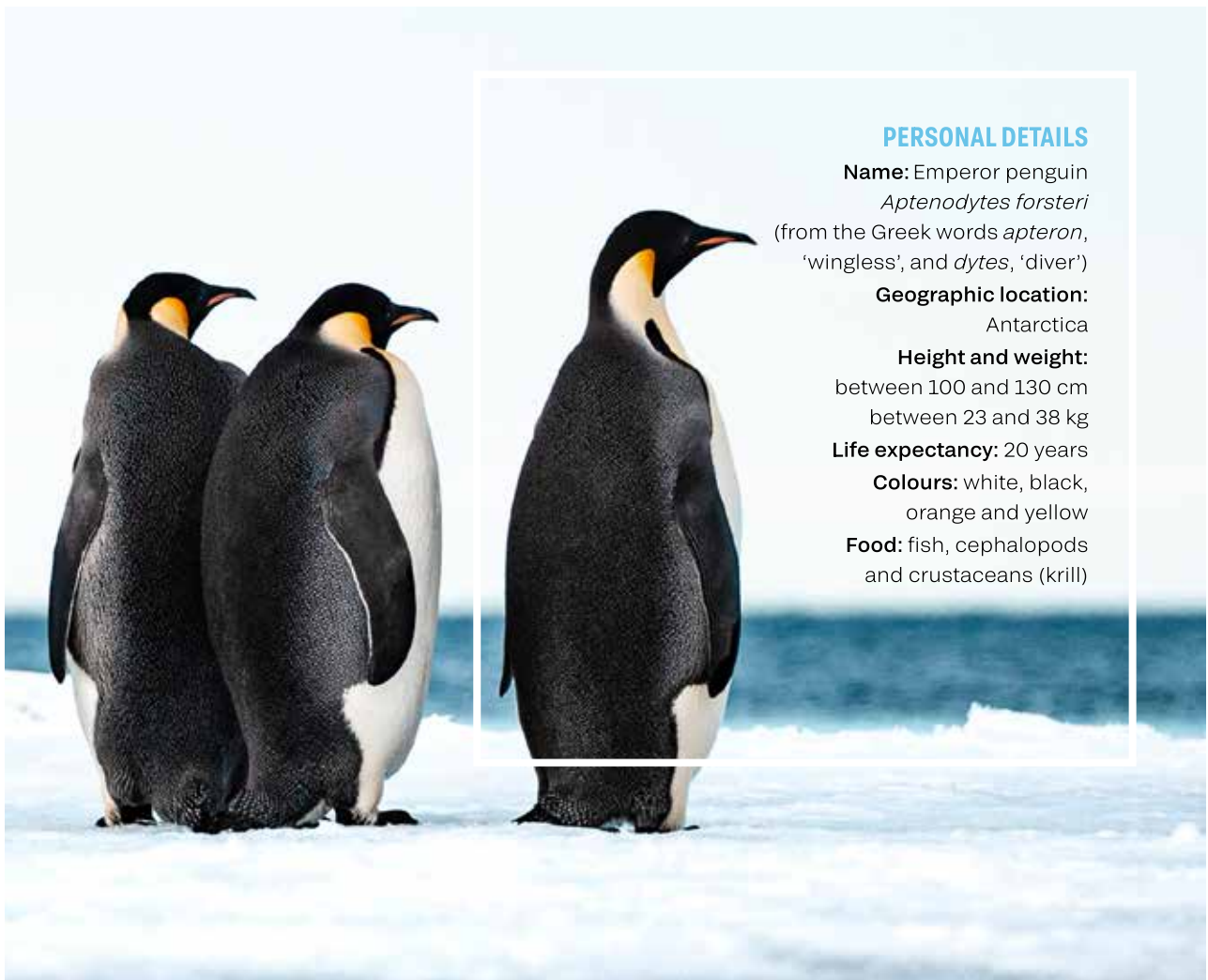
The emperor is equipped with four layers of feathers shaped like scales, a thick layer of blubber and a blood system that provides exceptional thermal insulation, maintaining body temperature at 38°C.

## A WHOLE YEAR IN ANTARCTICA

While other animal species leave the continent during the winter, and other birds breed in the spring or at the beginning of the austral summer, the emperor penguin is the only animal species to breed in the middle of Antarctica's austral winter. This strategy allows the young penguins to break away from their parents at the beginning of the summer, when food is abundant.

## VOCAL ACROBATICS

Each emperor penguin has its own singing style. This voice signature allows members of the same family to easily recognise and find each other in the middle of a colony made up of tens of thousands of penguins.



### PERSONAL DETAILS

**Name:** Emperor penguin

*Aptenodytes forsteri*  
(from the Greek words *apteron*,  
'wingless', and *dytes*, 'diver')

**Geographic location:**

Antarctica

**Height and weight:**

between 100 and 130 cm  
between 23 and 38 kg

**Life expectancy:** 20 years

**Colours:** white, black,  
orange and yellow

**Food:** fish, cephalopods  
and crustaceans (krill)

---

Emperor penguins can be seen on the itineraries detailed on pages 8-9, 12-13 and 18-19.

## ITINERARY

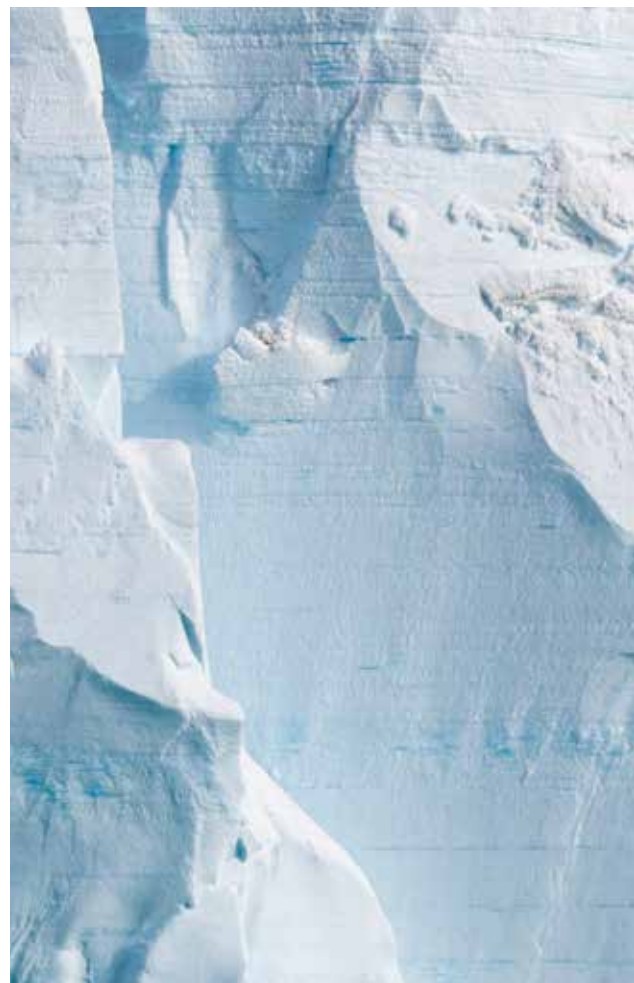
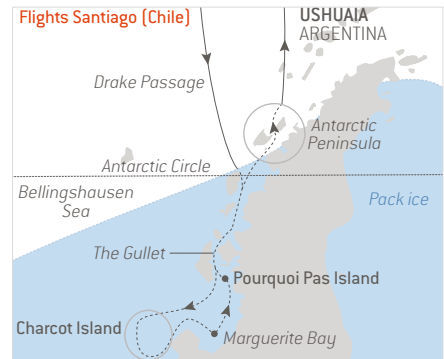
# In the wake of Jean-Baptiste Charcot

Ushuaia • Ushuaia

16 days/14 nights on board

5th December 2025 and 2nd January 2026

*Le Commandant Charcot* takes you in the footsteps of the explorer whose name it bears. More than a century ago, Jean-Baptiste Charcot, aboard the *Français*, forged his legend in the ice of the Bellingshausen Sea. As a highlight, Charcot Island stands as a frozen memorial to the past.



## HIGHLIGHTS

- The possibility of spotting the iconic emperor penguins and Ross seals.
- The surrounding wildlife: Adélie, chinstrap and Gentoo penguins; leopard, crabeater and Weddell seals; humpbacks, Minke whales and orcas.
- Landscapes: immense glaciers, monumental icebergs, immersion in the heart of the ice floes.

---

**From €24,210** <sup>(3)</sup>

Included in your cruise <sup>(4)</sup>:  
return flights Santiago/Ushuaia,  
the night in Santiago before embarkation and transfers.



# STANISLAS DEVORSINE: ICY DREAMS

At the helm of PONANT ships since 2018, the man from Nantes cultivates an insatiable passion for adventure, which is fully expressed during the semi-circumnavigations of the Antarctic aboard *Le Commandant Charcot* - real odysseys, returning in 2026. Read our portrait of a child of the seas.

*"You'll understand why it's impossible for me to remember".* When asked about what it felt like the first time he got on a boat, Stanislas Devorsine was all at sea. Which makes sense, given that he was barely two months old when his parents introduced him to the rocking of the waves aboard the family sailboat. The rest of his personal log confirms an addiction acquired at an early age. From his first thrills in an Optimist - *"incredible soapboxes for learning, where you can make real decisions from the age of 6"* - to the thrill of sailing aboard a keelboat he bought with his brother when he was a teenager, the young sailor was always thinking one step ahead.

After training at the merchant navy school, he carved out an eclectic profile with, in no particular order, a role as crewman on *Pen Duick VI*, on which he discovered ice at the same time as the Patagonian channels, a Jules Verne Trophy completed in 64 days on *Geronimo* alongside Olivier de Kersauson, and missions on the tug *Abeille Flandre*. This was followed by a decade as commander of *L'Astrolabe*, where Stanislas Devorsine broke his first ice and where he dedicated himself

to a science that he continues to nurture today with *Le Commandant Charcot*. *"I joined PONANT in 2018 to share my experience on this type of vessel and to design - among other things - certain safety equipment, such as survival suits and polar shelters."*

---

## THE ANTARCTIC, A CONTINENT OF WONDER

Several years and many nautical miles later, his amazement at the ship's behaviour remains the same. *"I can't get used to her ability to cross the insurmountable with such gentleness. On this level, Le Commandant Charcot continues to fool me."* This impetuosity helps to make the 7,500 nautical miles (almost 14,000 km, or the equivalent of covering a quarter of the circumference of the globe in 28 days) of the semi-circumnavigation of the Antarctic even more *"dizzying"*. *"These routes take us through some very remote areas. Beyond being a voyage, we're in a state of constant contemplation."* In the end, perhaps this was the daydream that Captain Devorsine had been considering since his first cradling at sea...

## Guests on the bridge

Did you know?

On board *Le Commandant Charcot*, the bridge, the key area where the officers pilot the ship, is the ideal place to understand the rudiments of polar navigation. Widely open to the exterior, as well as to visits by guests (at the captain's discretion), it is also a great place for observing the landscape.



## ITINERARY

# Unexplored Antarctica between two continents

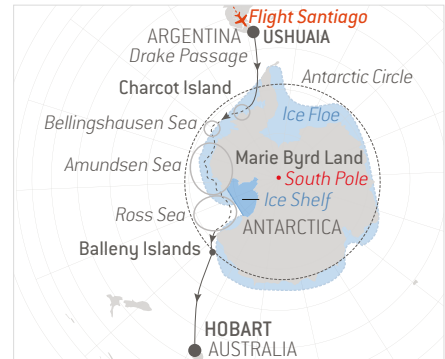
Ushuaia · Hobart, Tasmania

31 days/29 nights on board

16th January 2026

LAST STATEROOMS

From the far reaches of the South American continent to the 'Apple Isle' of Australia, we invite you to a semi-circumnavigation of the White Continent. A journey beyond the maps, in the wake of the great figures of polar exploration – Charcot, Bellingshausen, Ross, Amundsen...





## HIGHLIGHTS

- The exploratory approach to some of the least-known islands in the world: Charcot Island and the islands of Marie Byrd Land.
- The surrounding wildlife: crabeater, leopard and Weddell seals; Adélie and Royal penguins; humpback whales and orcas.
- The landscapes: ice shelves, including that of Ross, surrealist glaciers, monumental icebergs, immersion in the heart of the ice floe.
- The presence of **Jonathan Shackleton**, descendant of Sir Ernest Shackleton and family historian.

---

**From €58,140** <sup>(3)</sup>

Included in your cruise <sup>(4)</sup>:  
the flight Santiago/Ushuaia,  
the night in Santiago before embarkation and transfer.



## ITINERARY

# Unexplored East Antarctica & French Southern Lands

Hobart, Tasmania · Cape Town

29 days/28 nights on board

17th February 2026

LAST STATEROOMS

Far from the beaten track, we invite you to an expedition without equal, to the heart of the forgotten lands of Antarctica. In the wake of Dumont d'Urville, von Drygalski and Mawson, revive the epic of the great explorers and taste the exhilaration of a rare, unique journey that no one else offers you.



## HIGHLIGHTS

- The exploration of the largest polar icecap in the world, the Inlandsis in East Antarctica.
- The surrounding wildlife: humpback whales and orcas; seals; emperor, Gentoo, Adélie, chinstrap and macaroni penguins; and light-mantled albatrosses. and light-mantled albatrosses.
- Extend your discovery of the White Continent during a half-circumnavigation of the southern part. (Pages 16-17)

---

From €57,220 <sup>(3)</sup>



# ONE SHIP





# A THOUSAND SECRETS



Designed by the architectural firms Studio Jean-Philippe Nuel and Wilmotte & Associés, the design of *Le Commandant Charcot* reflects a constant priority: inviting the polar environment on board.



Let yourself be surprised by the **excellent menu** designed by Alain Ducasse for his one and only **gastronomic restaurant at sea**, the *Nuna*.

Access the **Cigar Lounge**, one of the most exclusive spaces on the ship, and enjoy a selection of fine cigars and premium spirits.



#### SERVICES PER SUITE OR CABIN

- Balcony or terrace on all our cabins or suites
- Butler service and priority boarding for certain suites
- Direct telephone line via satellite
- Free unlimited Wi-Fi Internet access\*

*Find all the services on [www.ponant.com](http://www.ponant.com)*

*\*Depending on the sailing areas, Wi-Fi may be inaccessible for reasons beyond our control.*

## PORTFOLIO | LIFE ON BOARD

Relax in the waters of the **Blue Lagoon**, heated by energy recovery (between 27 and 37 °C).

Relax by the **indoor pool** and contemplate the polar enchantment, while enjoying a fruit cocktail from the **detox bar**.



Cultivate your physical fitness thanks to the equipment in the **fitness room** and the presence on board of a sports coach.

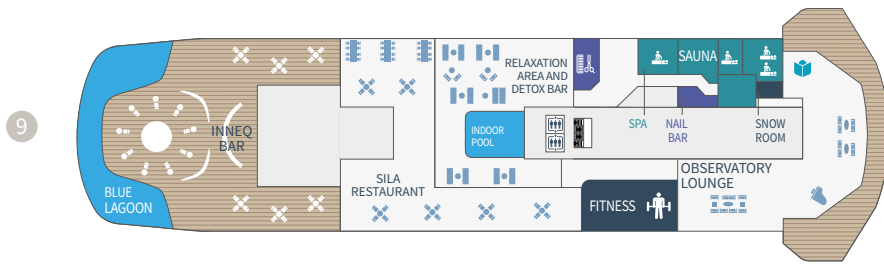
After a treatment at the **Biologique Recherche spa** or visit to the **sauna**, experience the benefits of the cold in the **snow cabin**.

Contemplate the immaculate spaces from the **uninterrupted promenade deck**, allowing you to walk around the entire ship, stopping for a break on one of the heated benches.

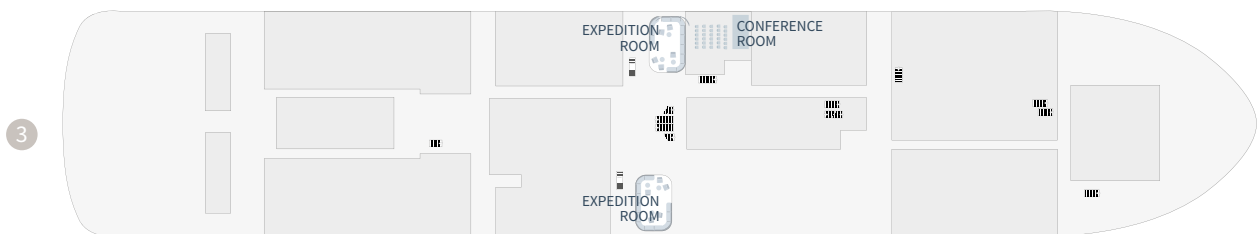
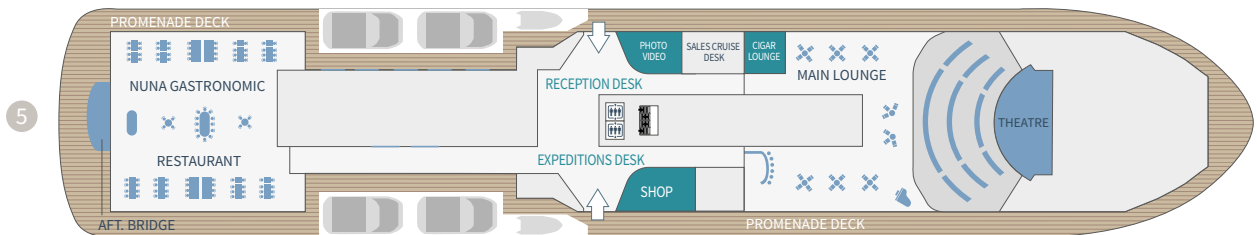
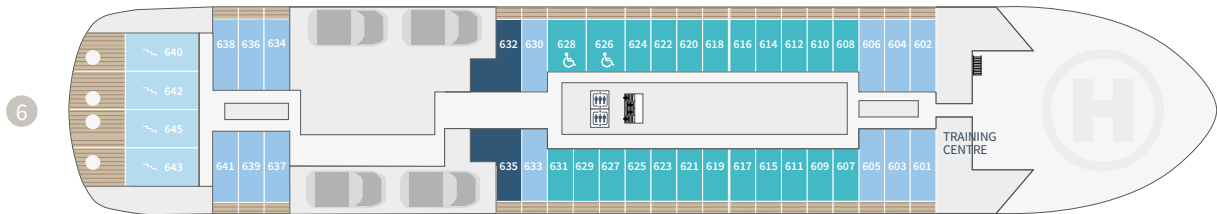
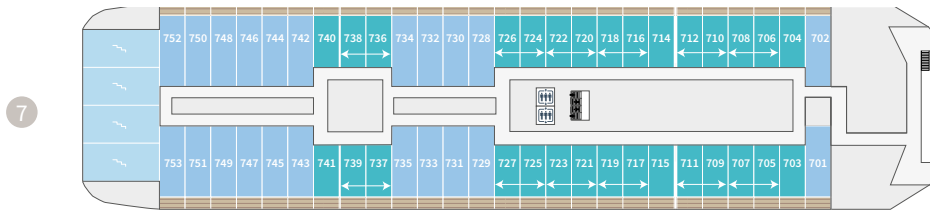
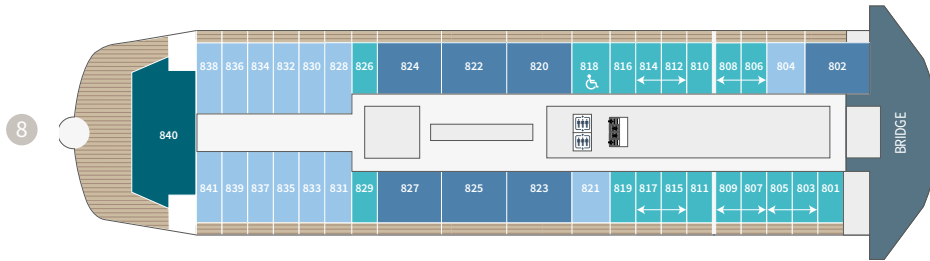








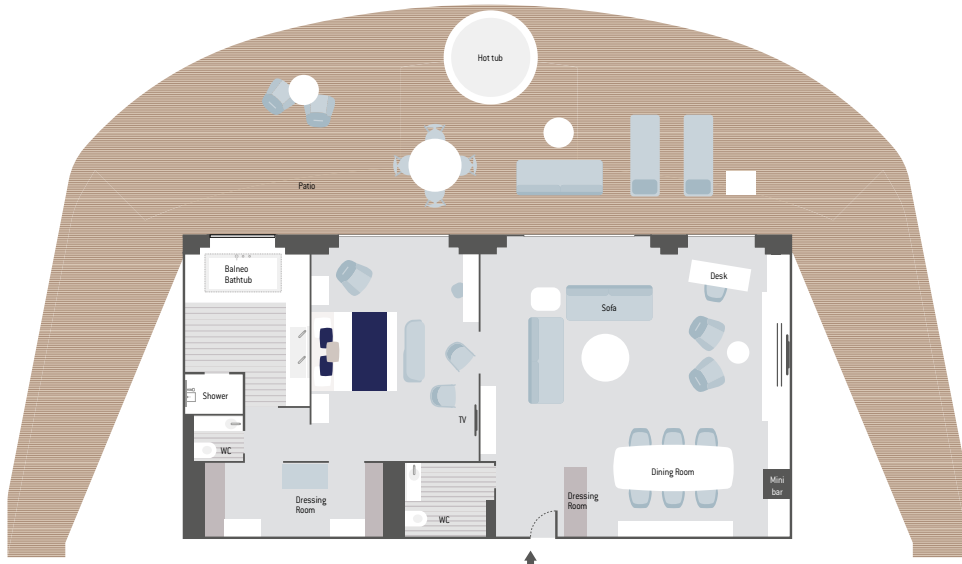
- Owner's Suite
- Duplex Suites
- Privilege Suites Deck 8
- Grand Prestige Suites Deck 6
- ↔ Prestige Suites Deck 7-8
- Deluxe Suites Deck 6-7-8
- Prestige Staterooms Deck 6-7-8



# Discover your Stateroom

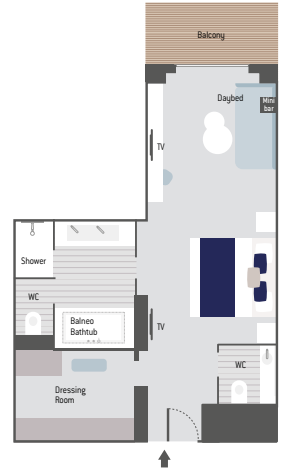
## OWNER'S SUITE

(115 sq.m/1,237 sq.ft + 186 sq.m/2,002 sq.ft private terrace with hot tub • balneo bathtub)



## GRAND PRESTIGE SUITE

(42 sq.m/452 sq.ft + 5 sq.m/54 sq.ft private balcony)



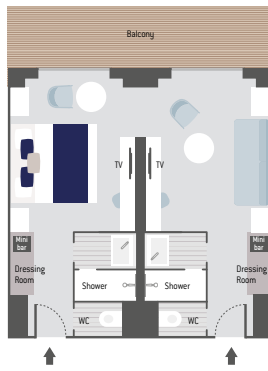
## PRIVILEGE SUITE

(48 sq.m/516 sq.ft + 12.5 sq.m/134.5 sq.ft private balcony • balneo bathtub)



## PRESTIGE SUITE

(40 sq.m/430 sq.ft + 10 sq.m/107 sq.ft private balcony)



## DUPLEX SUITE

(94 sq.m/1,011 sq.ft + 26 sq.m/279 sq.ft private terrace with hot tub • balneo bathtub)



## DELUXE SUITE

(28 sq.m/301 sq.ft + 5 sq.m/53 sq.ft private balcony)



## PRESTIGE STATEROOM

(20 sq.m/215 sq.ft + 5 sq.m/53 sq.ft private balcony)



Scan here for immediate  
embarkation on board  
*Le Commandant Charcot.*





Step into an immersive digital experience  
and discover the world of *Le Commandant Charcot*.


---

## INFORMATION & RESERVATIONS

+33 (0)4 91 26 62 20  
reservation@ponant.com

---

 [facebook.com/LeCommandantCharcotEN](https://www.facebook.com/LeCommandantCharcotEN)

 [Instagram @lecommandantcharcot](https://www.instagram.com/lecommandantcharcot)

 [Youtube PONANT Cruises](https://www.youtube.com/PONANT Cruises)



408 Avenue du Prado - 13008 Marseille - France

[www.ponant.com](http://www.ponant.com)

Licence 013060005



TAPEN-LCC-0325 (1) Offer per passenger, on a selection of cruises, applicable to all pre- or post-cruises services booked with PONANT (flights & hotel nights), valid from 26 March to 30 April 2025. This offer is not retroactive and is subject to availability. It can be combined with the charring offer, but is valid for only one of the two cruises, if applicable, and cannot be combined with the Single Supplement offer or any specific offer. (2) Single Supplement for double cabins used individually on a selection of cruises, with a limited number of cabins available and depending on the cabin category. Find all eligible cruises on our website. The itineraries, activities, wildlife, highlights, and photos used in this brochure are for illustrative purposes only and are not guaranteed. (3) Price per person based on double occupancy. The price displayed for each product corresponds to the best available rate at the time of brochure printing, in March 2025, and already includes the 10% discount for cruises covered by the offer. This price may change as the departure date approaches and varies according to cruise availability. It may be modified without prior notice. (4) Included economy class selected by PONANT. Prices may change depending on availability and prices charged in real time by airline companies. Photos compliant with operational regulations and taken during a safety flight. The itineraries, activities, wildlife, highlights, and photos used in this brochure are for illustrative purposes only and are not guaranteed. Documents and photos are non-contractual. More information can be found in the "General Terms and Conditions of Sale" section on [www.ponant.com](http://www.ponant.com). Photo credits: ©StudioPONANT; Olivier Bland - Romain Frège - Laurence Fischer - Morgane Larco - Clément Louineau - Morgane Mommeret - Soliz Roux - Violette Vauchelle. ©PONANT; Ian Dawson - Julien Fabro - Jack Harding - Natascha Klein - Antoine Leguen - François Lefebvre - Cindy Miller Hopkins - JC Plet - Gilles Trillard. @Picassa. Produced by: C&O Le Cabinet de Communication, March 2025.